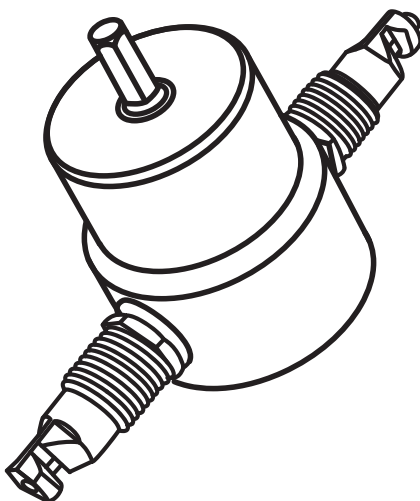


**596703**  
**1.8MM SHEET METAL DRILL NIBBLER**

**TOOLEX<sup>®</sup>**  
**Industrial**



Read through carefully and understand these instructions before use

**CONSUMER SERVICE CENTRE**  
**PO BOX 1012**  
**HAMILTON NSW 2303 AUSTRALIA**  
**Made in P.R.C**

# INSTRUCTION BOOK

## DOUBLE—HEADED CUTTER

### ITEM : 596703

Thanks for using this unique tool. Please look through the instruction book before your operation.

#### Warning :

Please do not cut the sheet thicker than stipulated below.

Do not use the tool beyond the operating scope herein.

Do not use the tool under unusual circumstances to avoid any possible accident.

Do not change any inner structure or re—assemble the tool without the advice of the manufacturer.

#### Note :

Tighten any screws before using the tool.

Never start operation before the motor runs. Keep a vertical angle of the cutting bit to the sheet.

Release the bit in operation while the motor is still running.

Please use special bit—cooling oil at—operation.

#### Characteristics :

Unique convenience and durability.

Excellent cutting speed by 2 metre per minute with 3000RPM. Best cutting result without any burrs at the cutting edges.

360° changeable direction at operation.

To be fitted with any electric drill or power drill with 3000 RPM.

Different cutting shapes available.

Be able to freely cut a roof tile with coloured glaze or other uneven steel plates into irregular shapes.

#### Capacity :

For main metal sheet cutting : iron plate 1.8mm

max./stainless steel plate 1.2mm max.

For other material cutting : copper or aluminum

plate 2.0mm max./ plastic or plywood 2.0mm max.

#### Content :

body

tool rest(replaceable)

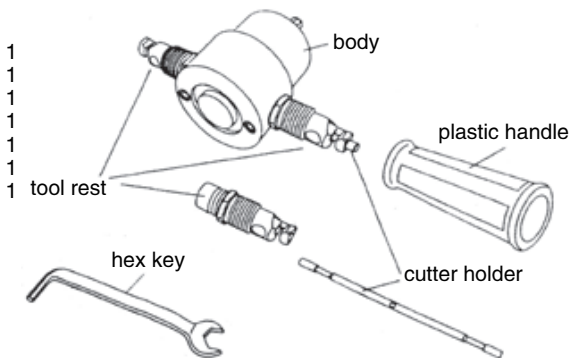
cutter holder(replaceable)

hex key

plastic handle

metal box packing

instruction book



#### Specifications :

Total tool length : 180mm

Weight : 400 gram

Dia of basic body : 51mm

Operating speed : 3000RPM

Min. Cutting Dia. : 12mm

## Operations

tool

Fasten the plate (to be cut) onto an operating platform, with a minimum distance of 15cm between the plate and the platform.

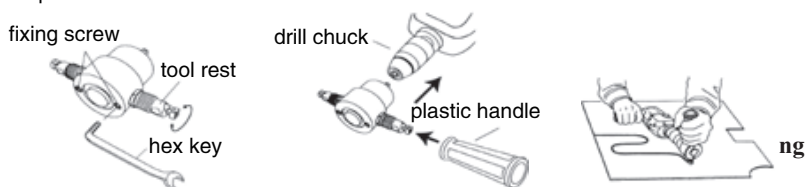
Fit the tool with an electric drill or any power drill by fastening the drill chuck.

Operate the tool when the motor runs.

Release the cutting bit when the motor keeps running.

Use special bit-cooling oil at operation.

See the picture below for more information when the tool is fitted to a drill.



## Replacement

identical

Tool rest Replacement :

Loosen the screw slowly with the hex wrench to release the bit holder for replacement. (see the attached picture)

Cutter holder Replacement :

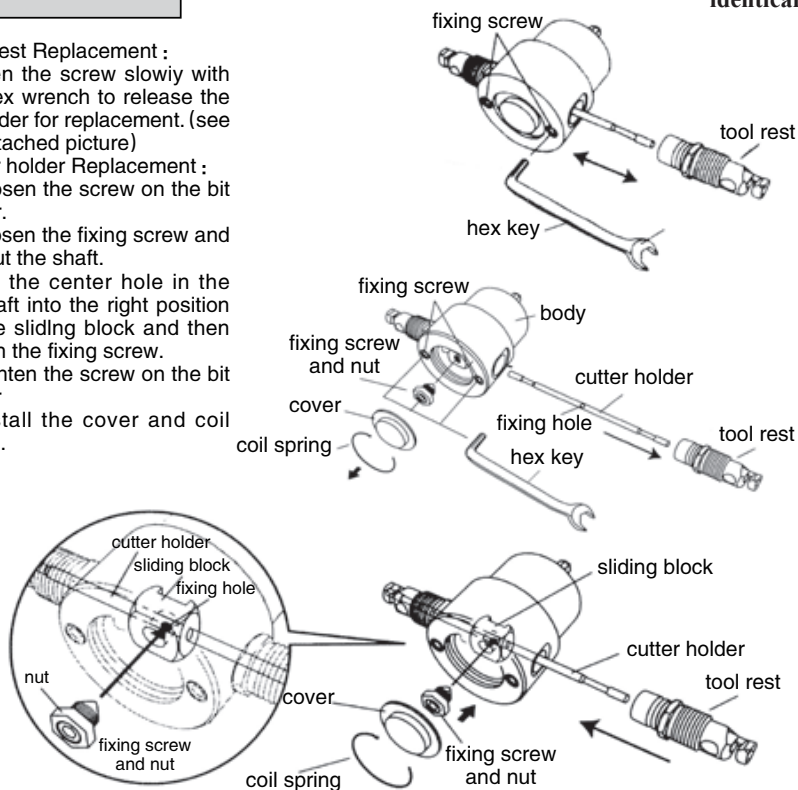
1. Loosen the screw on the bit holder.

2. Loosen the fixing screw and pull out the shaft.

3. Fix the center hole in the bit shaft into the right position of The sliding block and then tighten the fixing screw.

4. Tighten the screw on the bit holder

5. Install the cover and coil spring.



## **TOOLEX INDUSTRIAL WARRANTY INFORMATION**

Every **TOOLEX** power tool has thoroughly been inspected and tested before leaving the factory. In addition to any statutory regulations, **TOOLEX** warrants all of its products against faulty workmanship and faulty material for a twelve (12) month period from the date of purchase and undertakes, once inspected, to repair or replace, free of charge each product or part thereof that are faulty, on condition that:

The complete product is returned to **TOOLEX** or one of its Authorised Service Centres, in person or freight pre-paid by the consumer, and the tool is found on examination, to be faulty from a manufacturing defect.

The product or relevant spare parts have not been misused, neglected, or been damaged by in an accident or the repairs are required due to normal wear and tear.

Our goods come with guarantees that cannot be excluded under the Australian Consumer Law.

You are entitled to a replacement or refund for major failure and for compensation for any reasonable foreseeable loss or damage. You are also entitled to have the goods repaired or replaced if the goods fail to be of acceptable quality and the failure does not amount to a major failure.

**PLEASE SUPPLY A COPY OF YOUR TAX INVOICE FOR YOUR WARRANTY!**