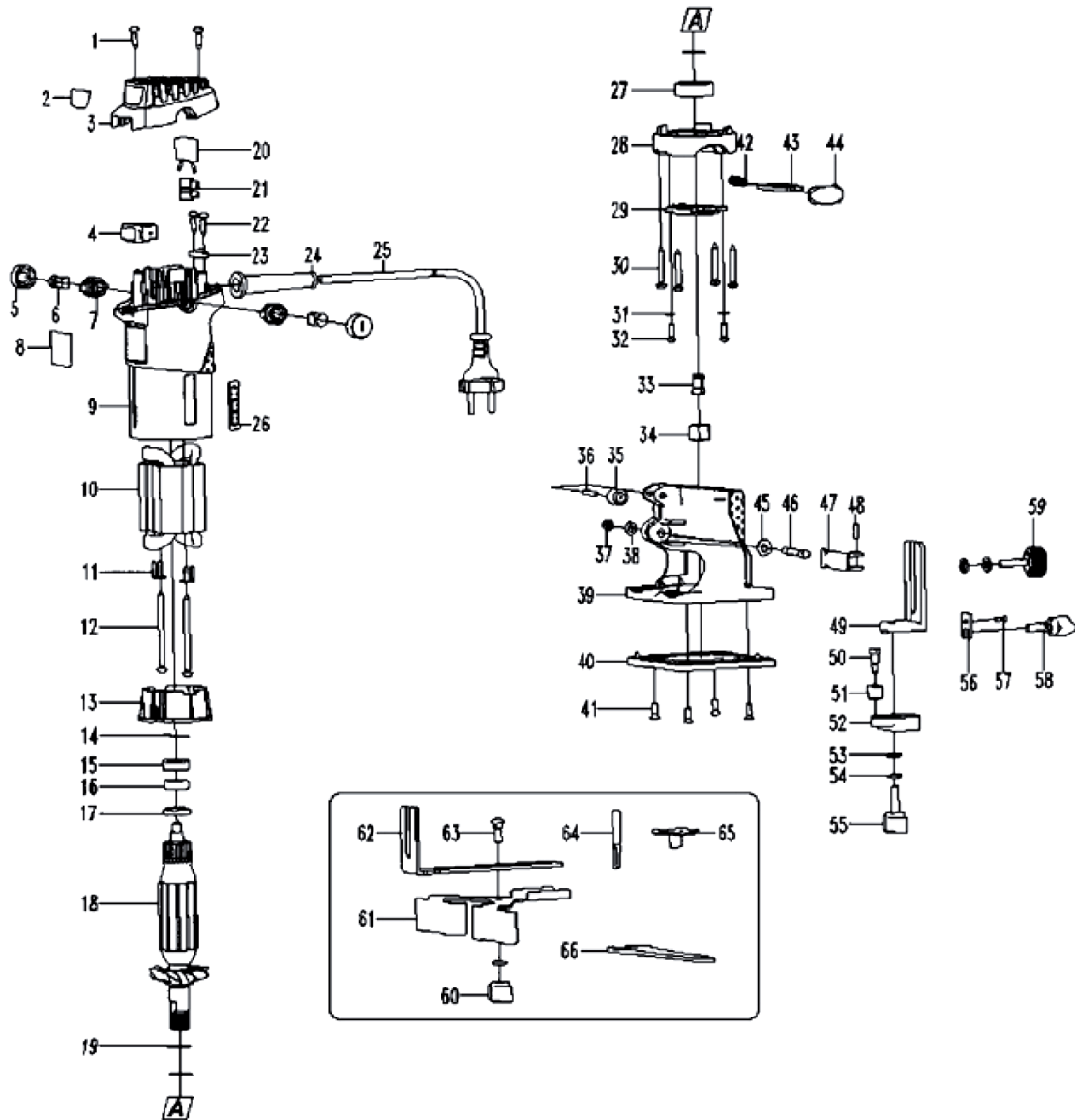


598035 PARTS BREAKDOWN



Item Code	Alternate Code	Extended Description
501076	598035-04	Switch HY17-7 NO4 To Suit 598035 Trimmer
501077	598035-05	Brush Cover NO5 To Suit 598035 Trimmer
501078	598035-06	Carbon Brushes NO6 To Suit 598035 Trimmer
501079	598035-033	Collets 1/4" No33 To Suit 598035 Trimmer
501080	598035-034	Collet Nut NO34 To Suit 598035 Trimmer

NO	NAME	Q'ty	NO	NAME	Q'ty
1	ScrewST4.2 × 16	2	34	Locknut	1
2	Name Plate	1	35	Rubber trolley	1
3	Rating	1	36	Pin B3X22	1
4	HY17-7 Switch	1	37	Nut M5	1
5	Brush cover	2	38	Washer 5	1
6	Carbon brush	2	39	Shield	1
7	Brush holder	2	40	Motherboard	4
8	Nameplate	1	41	Screw M4 × 8	1
9	Housing	1	42	Lock Spring	1
10	Stator	1	43	lock plate	1
11	Cover plate	2	44	Lock button	1
12	ScrewST4.2 × 65	2	45	Lock washer	1
13	Retaining ring	1	46	Lock bolt	1
14	Washer	1	47	Lock handle	1
15	607Bearing sleeve	1	48	Pin 3X14	1
16	Ball bearing 607	1	49	Fixing adjust guiding parts	1
17	Dustproof circle	1	50	Screw M5x16	1
18	Armature	1	51	Trolley	1
19	Circle 15	1	52	Active adjust guiding parts	1
20	Capacitance 0.22UF	1	53	Washer 6	1
21	Terminal	2	54	Washer 6	1
22	ScrewBT4.2 × 14	1	55	Bolt M6X20	1
23	Cord clamp	1	56	Support board	1
24	Cord guard	1	57	Screw M5x8	1
25	Cord pin 2 × 0.75m2	1	58	Bolt	1
26	Depth scale	1	59	Clamp screw	1
27	Ball bearing 6002	1	60	Knob	1
28	Front guard	1	61	Guiding board	1
29	Press cover	4	62	Guiding board	1
30	ScrewST4.2 × 35	2	63	Bolt M6X16	1
31	Washer 4	2	64	Bit 6	1
32	Screw M4 × 12	1	65	Guiding circle	1
33	Collet	1	66	Spanner	1