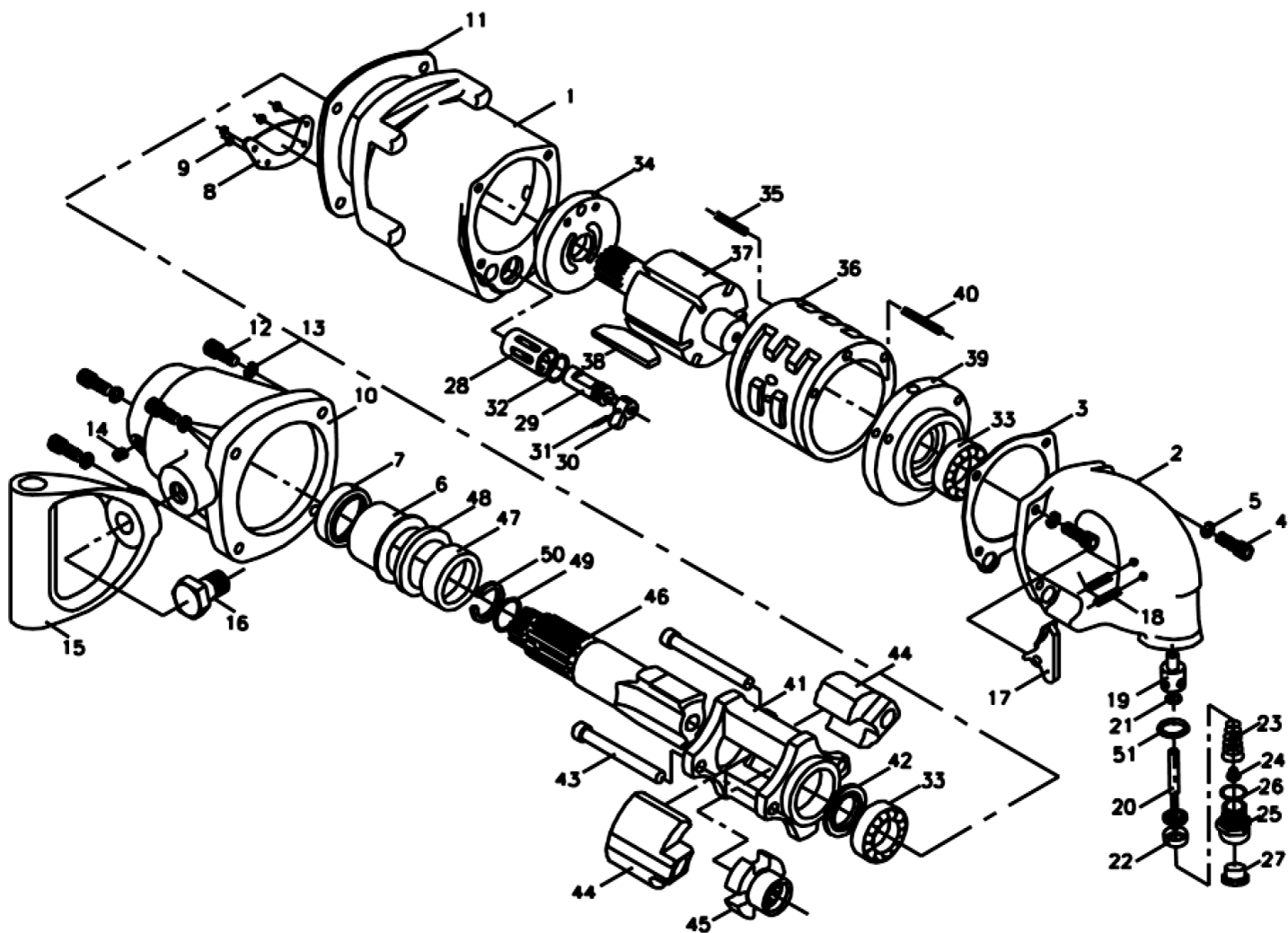


534323
PARTS BREAKDOWN



Component	Item Description
534802	Air Wrench Impact-Trigger 534323
534803	Air Wrench Impact-Bush/Throttl 534323
534804	Air Wrench Impact-Pin/Throttle 534323
534805	Air Wrench Impact-"O"Ring 534323
534806	Air Wrench Impact-Spring Throt 534323
534807	Air Wrench Impact-Hose Adaptor 534323
534808	Air Wrench Impact-Gasket 534323
534809	Air Wrench Impact-Screw Air 534323
534810	Air Wrench Impact-Retainer "O" 534323
534811	Air Wrench Impact-Lever Revers 534323
534812	Air Wrench Impact-Pin Roll 534323
534813	Air Wrench Impact-Bush Flange 534323
534814	Air Wrench Impact-Blade Rotor 534323
534815	Air Wrench Impact-Fr/End Plate 534323
534816	Air Wrench Impact-Bearing Ball 534323
534817	Air Wrench Impact-R/End Plate 534323
534818	Air Wrench Impact-Housng Cltch 534323
534819	Air Wrench Impact-Gasket 534323
534820	Air Wrench Impact-Oil Seal 534323
534821	Air Wrench Impact-"O"Ring 534323
534822	Air Wrench Impact-"O"Ring 534323

AT-6089L

828

Index No	Description	Part No	Q'ty
1	Motor Housing	B828001110240	1
2	End Cap	B828034110240	1
3	End Cap Gasket	B828035000000	1
4	Hex.Socket Bolt(S:W1/4"-L25)	B826102000000	4
5	Spring Washer	B826143000000	4
6	Anvil Bushing	B828017200100	1
7	Oil Seal	B828037000000	1
8	Muffle Steel Cover	B828038200110	1
9	Pillips Pan Screw	B811106001000	4
10	Clutch Housing	B828032110240	1
11	Front Gasket	B828031000000	1
12	Hex.Socket Bolt	B828103000000	4
13	Spring Washer	B858143000000	4
14	Hex.Socket Bolt	B828105000000	1
15	Handle Dead	B828041110240	1
16	Hex.Head Bolt	B828109200110	1
17	Trigger	B828004310000	1
18	Trigger Pin	B828005000000	2
19	Throttle Bushing	B828006620100	1
20	Throttle Pin	B828007200100	1
21	O-Ring(S:d8.2- 2)	B811117800000	1
22	Retainer	B828054620100	1
23	Compression Spring	B828009280000	1
24	Screen	B828053620000	1
25	Hose Fitting (PT1/2"-14T)	B828010200110	1
26	O-Ring	B867118800000	1

Option:

46-1	6" Spline Anvil(268mm)	B828018223111	1
------	------------------------	---------------	---

Index No	Description	Part No	Q'ty
27	Dust Cover	B828067770000	1
28	Valve Sleeve	B828002620100	1
29	Reverse Valve	B828003310100	1
30	Lever Reverse	B828014150100	1
31	Spring Pin	B815129000000	1
32	O-Ring	B828119800000	1
33	Ball Bearing(S:6005)	B828028000000	2
34	Front End Plate	B828027310100	1
35	Spring Pin(S: 6-L18)	B858131000000	1
36	Cylinder	B828024310100	1
37	Rotor	B828025220100	1
38	Rotor Fan	B828026700000	6
39	Rear End Plate	B828029310100	1
40	Spring Pin(S: 6-L24)	B828131000000	1
41	Hammer Cage	B828019200100	1
42	Hammer Washer	B828057210100	1
43	Hammer Pin	B828020220100	2
44	Hammer Dog	B828021220100	2
45	Drive Cam	B828022220100	1
46	2" Spline Anvil(163mm)	B828018220111	1
47	Bushing Flange	B828063220100	1
48	Anvil Washer	B828016210100	1
49	O-Ring	B828121800000	1
50	Anvil Collar	B828066280000	1
51	O-Ring(S:d15.8- 2.4(P16))	B867119800000	1

46-2	8" Spline Anvil(321mm)	B828018224111	1
------	------------------------	---------------	---

XDES000294000

(828 Spline) 2013.08.28

P.S.The standard Air Pressure is 90 PSI (6.3kg/cm²)