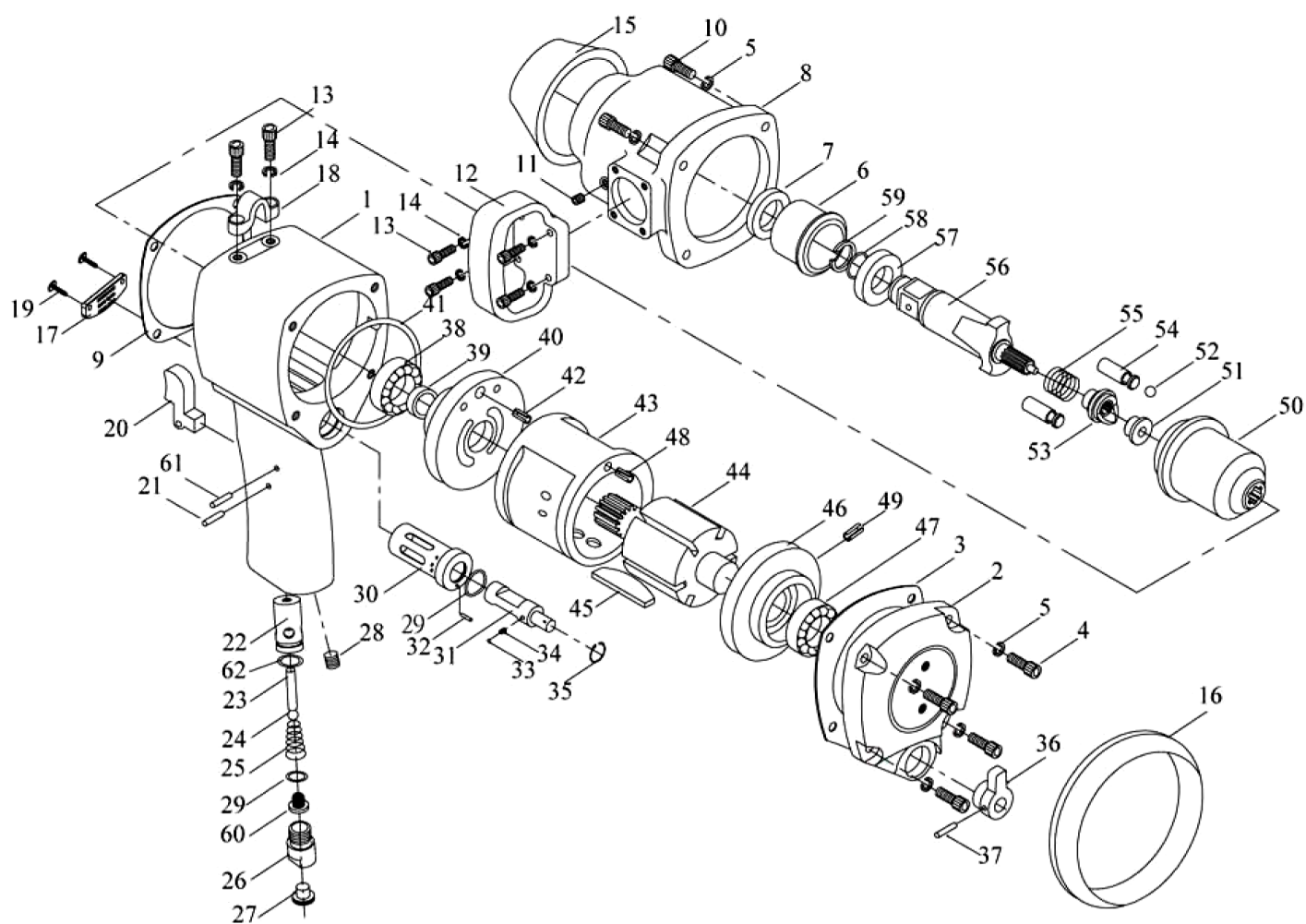


534308  
PARTS BREAKDOWN



Component	Item Description
<a href="#">535619</a>	Air Wr Imp 1"-Hammer Cage 534308
<a href="#">535620</a>	Air Wr Imp 1"-Drive Cam Founda 534308
<a href="#">535621</a>	Air Wr Imp 1"-Drive Cam 534308
<a href="#">535622</a>	Air Wr Imp 1"-Drive ShAFt 534308
<a href="#">535623</a>	Air Wr Imp 1"-Muffler Exhaust 534308
<a href="#">576696</a>	Air Imp Wrench 1" Spring 534308-46
<a href="#">576684</a>	Air Imp Wrench 1" Rev Bushing 534308-2
<a href="#">576685</a>	Air Imp Wrench 1" Trigger 534308-4
<a href="#">576686</a>	Air Imp Wrench 1" Bush Throttle Valve 534308-6
<a href="#">576687</a>	Air Imp Wrench 1" Valve Stem 534308-7
<a href="#">576688</a>	Air Imp Wrench 1" Ball 534308-8
<a href="#">576689</a>	Air Imp Wrench 1" Spring 534308-9
<a href="#">576690</a>	Air Imp Wrench 1" Hose Joint 534308-10
<a href="#">576691</a>	Air Imp Wrench 1" Drive Cam 534308-22
<a href="#">576692</a>	Air Imp Wrench 1" Rotor Blades 534308-26 (6)
<a href="#">576693</a>	Air Imp Wrench 1" S Packing 534308-33
<a href="#">576694</a>	Air Imp Wrench 1" "O" Ring 534308-42
<a href="#">576695</a>	Air Imp Wrench 1" Pin 534308-45
<a href="#">525415</a>	Air Imp Wrch 1800-Drive Cam 534308 - 55
<a href="#">525416</a>	Air Imp Wrch 1800-Hammer Bar 534308 - 56
<a href="#">525417</a>	Air Imp Wrch 1800-Pin 534308 - 63
<a href="#">525622</a>	Air Impact Wrench 1" Handle 534308/At-6083P In Plast Bag
<a href="#">537110</a>	Air Wrench Imp-1" Hammer Bar 534308-B876020200

## AT-6083P

Index No	Description	Part No	Q'Ty	Index No	Description	Part No	Q'Ty
1	Motor Housing	B876001110240	1	32	Pin(S: $\phi$ 2-9.8L)	B858126290100	1
2	Rear Cover	B858034121240	1	33	Steel Ball(S: $\phi$ 1/8")	B840060000000	1
3	Rear Gasket	B858035001000	1	34	Spring(S:d2.0-D3.0-L10-0.5t)	B858068280000	1
4	Hex.Socket Bolt(S:M8*1.25P*L25)	B858102000000	4	35	C-Ring( $\phi$ 22.5)	B858136000000	1
5	Spring Washer	B858143000000	8	36	Lever Reverse	B858014620000	1
6	Anvil Bushing	B876017200100	1	37	Spring Pin(S: $\phi$ 3-L24)	B826128000000	1
7	Oil Seal(S:d40.7-D50-L7)	B876037000000	1	38	Ball Bearing(S:6005)	B828028000000	1
8	Clutch Housing	B858032110240	1	39	Oil Seal(S:d24.7-D35-L4.6)	B876036000000	1
9	Front Gasket	B858031000000	1	40	Front End Plate	B876027310100	1
10	Hex.Socket Bolt(S:M8*1.25P*L30)	B858103000000	4	41	O-Ring(S:d70- $\phi$ 4)	B876116800000	1
11	Clamp Screw(S:PT1/8"-L8)	B828105000000	1	42	Spring Pin(S: $\phi$ 6-L16)	B858130000000	1
12	Handle Dead	B867041120240	1	43	Cylinder	B858024310100	1
13	Hex.Socket Bolt(S:M6*1.0P*L16)	B858109000000	6	44	Rotor	B876025220100	1
14	Spring Washer	B826143000000	6	45	Rotor Blade	B858026700000	6
15	Protecting Rubber	B858045800000	1	46	Rear End Plate	B858029310100	1
16	Protecting Rubber	B858069800000	1	47	Ball Bearing(S:6204)	B858030000000	1
17	Muffle Plate	B876038780001	1	48	Spring Pin(S: $\phi$ 6-L18)	B858131000000	1
18	Hanger	B858042220240	1	49	Spring Pin(S: $\phi$ 3-L6)	B858132000000	1
19	Philips Pan Screw(S:M3*L12)	B811106002000	2	50	Hammer Cage	B886019220100	1
20	Trigger	B858004740000	1	51	Drive Cam Base	B876043220100	1
21	Spring Pin(S: $\phi$ 3-L22)	B803124000000	1	52	Steel Ball(S: $\phi$ 1/2")	B876061250000	1
22	Throttle Bushing	B858006620100	1	53	Drive Cam	B886022220100	1
23	Throttle Pin( $\phi$ 4-32L)	B858007290100	1	54	Hammer Bar	B886021241100	2
24	Plastic Ball(S: $\phi$ 1/2")	B858008740000	1	55	Spring(S:d30.6-D37.6-L50-3.5t)	B876062280000	1
25	Spring	B858009280000	1	56	Anvil 2"(165mm)	B886018240110	1
26	Hose Fitting	B858010200110	1	57	Anvil Washer	B876016210100	1
27	Dust Cover	B828067770000	1	58	O-Ring(S:d17.6- $\phi$ 2.8)	B858121800000	1
28	Clamp Screw(S:PT1/4"-L11)	B858110000000	1	59	Anvil Collar	B858066280000	1
29	O-Ring(S:d15.8- $\phi$ 2.4(P16))	B867119800000	2	60	Screen	B828053620000	1
30	Valve Sleeve	B858002200100	1	61	Spring Pin(S: $\phi$ 3-L18)	B815129000000	1
31	Reverse Valve	B858003620100	1	62	O-Ring(M: NBR S:d10.7- $\phi$ 1.5)	B858122800000	1

### Option:

56-1	Anvil 6"(280mm)	B886018243110	1	56-2	Anvil 8"(330mm)	B886018244110	1
------	-----------------	---------------	---	------	-----------------	---------------	---

04/28/2015