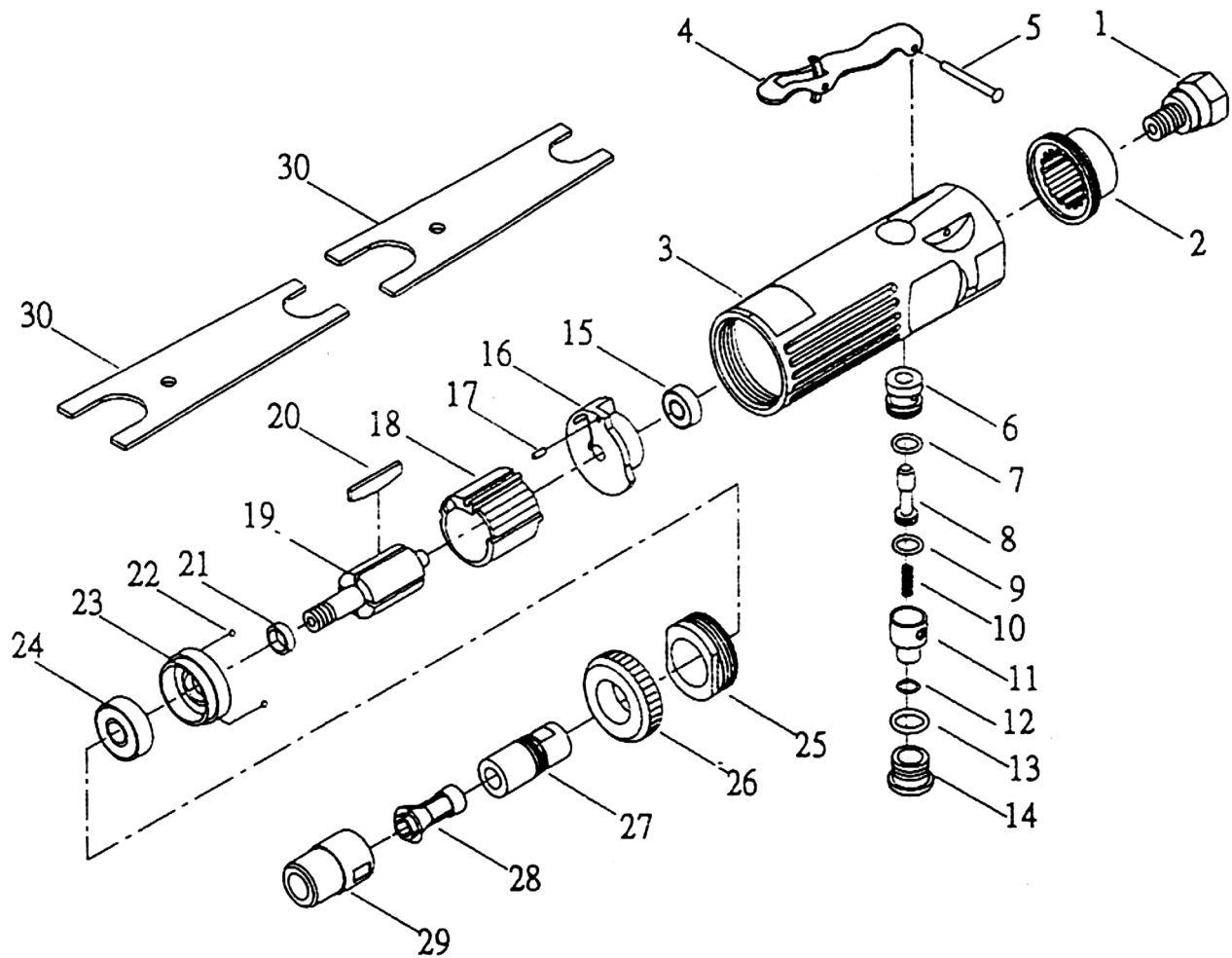


534302

PARTS BREAKDOWN



Component	Item Description
534473	A/Die Grinder Nut Collet 534302
534474	A/Die Grinder Rotor Blade (4) 534302
534476	A/Die Grinder Bush Throt Valve 534302
534478	A/Die Grinder O Ring 534302
534985	A/Die Grinder Collar 534302
534986	A/Die Grinder Rotor 534302
534916	A/Die Grinder Pin Throttle 534302
534917	A/Die Grinder Spring 534302
534918	A/Die Grinder Air Regulator 534302
534919	A/Die Grinder O Ring 534302
534920	A/Die Grinder O Ring 534302
534921	A/Die Grinder Valve Stem 534302
534922	A/Die Grinder O Ring 534302
534923	A/Die Grinder Cylinder 534302
534924	A/Die Grinder Pin(2) 534302
534925	A/Die Grinder Cap Housing 534302
534926	A/Die Grinder Chuck Spindle 534302
534475	A/Die Grinder Collets 1/4" 534302
534469	A/Die Grinder Collets 1/8"

534302

PARTS BREAKDOWN



No.	Part No.	Description	QTY.
01	KL-20401	Inlet Bushing	1
02	KL-20402	Exhaust Deflector	1
03	KL-20403	Motor Housing	1
04	KL-20404	Throttle Lever	1
05	KL-20405	Pin	1
06	KL-20406	Valve	1
07	KL-20407	"O"Ring	1
08	KL-20408	Throttle Valve	1
09	KL-20409	"O"Ring	1
10	KL-20410	Spring	1
11	KL-20411	Air Regulator	1
12	KL-20412	"O"Ring	1
13	KL-20413	"O"Ring	1
14	KL-20414	Valve Screw	1
15	KL-20415	Ball Bearing	1

No.	Part No.	Description	QTY.
16	KL-20416	Rear End Plate	1
17	KL-20417	Pin	1
18	KL-20418	Cylinder	1
19	KL-20419	Rotor	1
20	KL-20420	Rotor Blades	4
21	KL-20421	Washer	1
22	KL-20422	Ball	2
23	KL-20423	Front End Plate	1
24	KL-20424	Ball Bearing	1
25	KL-20425	Retainer	1
26	KL-20426	Housing Cap	1
27	KL-20427	Spindle	1
28	KL-20428	Collet	1
29	KL-20429	Collet Nut	1
30	KL-20430	Wrench	2