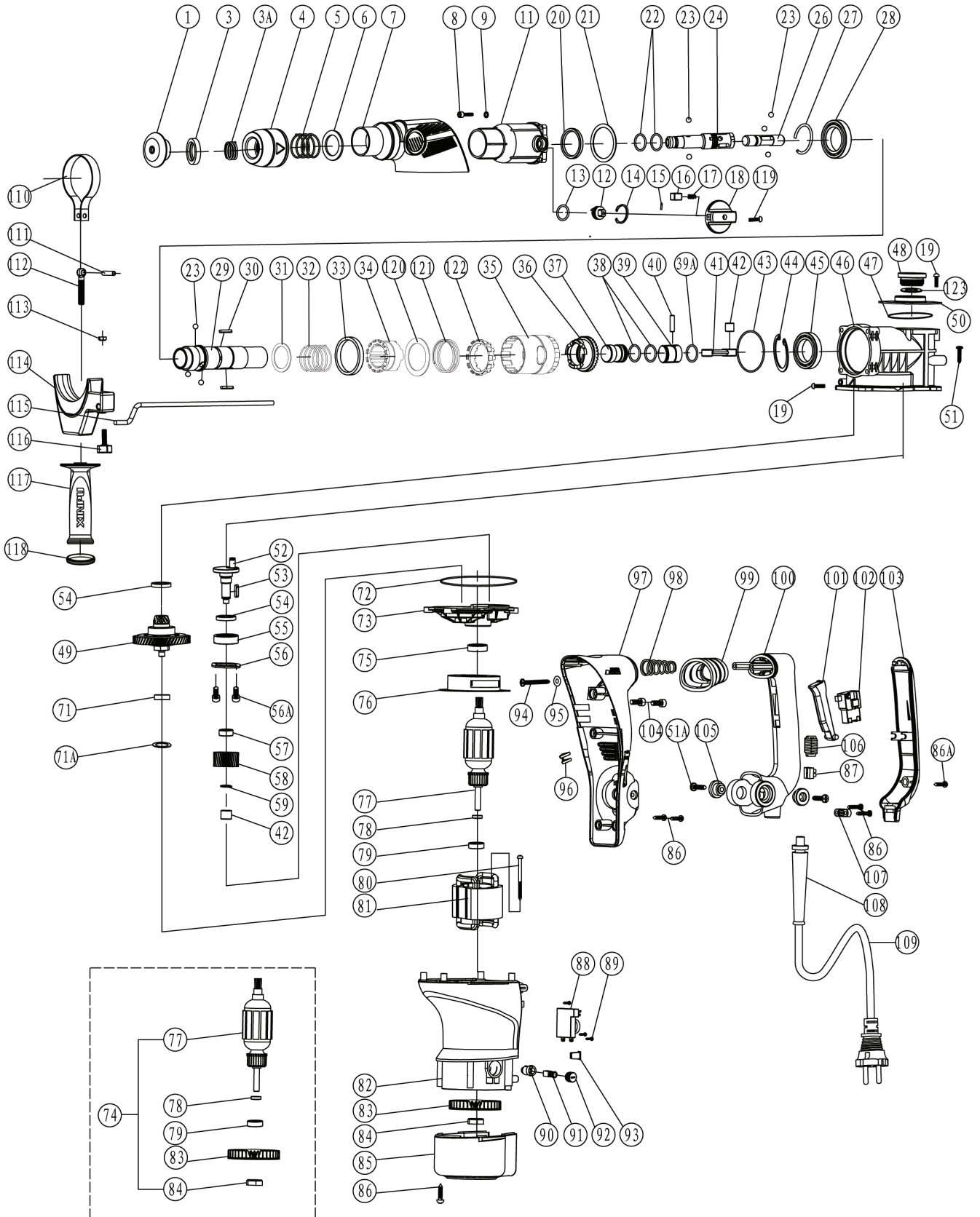


511189

PARTS BREAKDOWN



Component	Item Description
500085	Connecting Rod Assy To Suit 511189 Rotary Demo Hammer
500094	Carbon Brush Pair To Suit 511189 Rotary Demo Hammer
500098	Main Handle Cover To Suit 511189 Rotary Demo Hammer
500099	Side Handle Assy To Suit 511189 Rotary Demo Hammer
500077	Turn Staff Armor To Suit 511189 Rotary Demo Hammer
500093	Brush Holder Pair To Suit 511189 Rotary Demo Hammer
500083	Bevel Gear To Suit 511189 Rotary Demo Hammer
500095	Brush Cap To Suit 511189 Rotary Demo Hammer
500096	Main Handle To Suit 511189 Rotary Demo Hammer
500079	Seal Assy To Suit 511189 Rotary Demo Hammer
500091	Fan Cover To Suit 511189 Rotary Demo Hammer
500080	Sleeve Assy To Suit 511189 Rotary Demo Hammer
500082	Clutch 1 To Suit 511189 Rotary Demo Hammer
500084	Impact Piston To Suit 511189 Rotary Demo Hammer
500086	Clutch Compages To Suit 511189 Rotary Demo Hammer
500089	Stator/Field To Suit 511189 Rotary Demo Hammer
500090	Fan To Suit 511189 Rotary Demo Hammer
500092	Speed Adjuster To Suit 511189 Rotary Demo Hammer
500097	Switch Assy To Suit 511189 Rotary Demo Hammer
500100	Ratchet Ring To Suit 511189 Rotary Demo Hammer
500888	Armature To Suit 511189 Rotary Demo Hammer
500081	Cylinder Assy To Suit 511189 Rotary Demo Hammer
500078	Function Mode Knob Assy To Suit 511189 Rotary Demo Hammer
500087	Crankshaft Gear To Suit 511189 Rotary Demo Hammer

Parts List

XP-No	Item No.	Part Describe	Quantity	XP-No	Item No.	Part Describe	Quantity
88264120	1	Turn Staff Armor	1	88275045	58	Crankshaft gear (2#Tooth)	1
88275037	3	Rotating sleeve ring	1	88210113	59	Φ12 Retaining Ring	1
88224142	3A	Rotating sleeve ring Spring	1	88239004	71	Ball Bearing 627 Z	1
88264125	4	Flex Sheath	1	88224143	71A	WasherΦ22×Φ14×0.5	1
88224085	5	Flex Sheath Spring Φ2×Φ31×80	1	88264123	72	Airproof Ring	1
88310009	6	Felt ring Φ45×Φ40×3.5	1	88290092	73	Inner Cover	1
88264126	7	Cover	1	88280125-1	74	Armature Subassembly	1
88210165	8	Hex.Socket Bolt M5×25 (12.9)	4	88239003	75	Ball Bearing 6001 RS	1
88210051	9	Φ5 Spring Washer	4	88264129	76	Fan Guide	1
88290090	11	front shell	1	88280000	77	Armature	1
88264173	12	Dial Staff Sheath	1	88243033	78	Magnetism Inductarium	1
88264121	13	Fluorin O Ring Φ14×Φ2.5	1	88239006	79	Ball Bearing 608 RS	1
88210197	14	Φ18 Retaining Ring	1	88210042	80	Tapping Screw ST4.8×58	2
88224122	15	Pushbutton lockpin	1	88280126-1	81	Stator	1
88264160	16	locked Pushbutton	1	88264130	82	Housing Ass'y	1
88224002	17	Pushbutton Spring Φ0.6×Φ4.4×14	1	882890525	83	Fan	1
88264127	18	Function Knob	1	88210206	84	Nut M8x1x3.8	1
88210032	19	Machine Screw M4×12	5	88264131	85	Fan Cover	1
88264138	20	Oil Seal Ring Φ35×Φ51×6	1	88210038	86	Tapping Screw ST4.2×18	10
88224088	21	Washer Φ55×Φ45×1	1	88210132	86A	Tapping Screw ST4.2×22	1
88264081	22	Fluorin O Ring Φ26×Φ2.1	2	88210076	87	Rivet	2
88210180	23	Steel Ball SΦ7.144	8	88244037	88	Speed Adjuster	1
88275043	24	Rotating sleeve	1	88210202	89	Cross recessed pan head tapping screwsST3.5x14	3
88275050	26	Ram Subassembly	1	88243007	90	Brush Holder	2
88224130	27	Steel Wire Block Ring Φ32xΦ2	1	88243028	91	Carbon Brush	2
88239001	28	Ball Bearing 6907 RS	1	88243001	92	Brush Cap	2
88275044	29	Cylinder	1	88264158	93	Limit block	1
88210167	30	Palt Key 3x20	2	88210181	94	Machine Screw ST5.5x30	2
88224117	31	Clutch Spring SeatΦ42×Φ32.4×1.5	1	88210183	95	Flat Washer Φ5.5×Φ12×1	2
88224116	32	Clutch Spring Φ1.8×Φ36×80	1	88264132	96	Indicator	1
88264084	33	Washer Φ47×Φ54.5×7	1	88264133	97	Main Handle Seat	1
88224115	34	Clutch1	1	88223057	98	Shock Absorption Spring	1
88264118	35	lining	1	88264124	99	Shock Absorption Jacket	1
88275039	36	Bevel gear (1#Tooth)	1	88264135	100	Main Handle	1
88275036	37	Impact Piston	1	88264134	101	Switch Trigger	1
88264085	38	Fluorin O Ring Φ26×Φ3.1	2	88244035	102	Switch	1
88290093	39	Piston	1	88264136	103	Main Handle Cover	1
88264050	39A	Fluorin O Ring Φ17.7×Φ1.5	1	88210003	104	Hex.Socket Bolt M5×16	2
88224103	40	Piston Pin	1	88223059	105	Main Handle Platen	2
88290094	41	Connecting Rod Ass'y	1	88244008	106	Electricity Feels	1
88234016	42	Needle Bearing HK081410	2	88261010	107	Cord Clip	1
88264086	43	O Ring Φ59×Φ2	1	88264161	108	Cord Armor	1
88210067	44	Φ47 Retaining Ring	1	88250000	109	Cord	1
88233007	45	Oiliness Bearing	1	88224120	110	Side Handle Ass'y Steel Tie	1
88290091	46	Decelerate Box	1	88210170	111	Spring Column Pin Φ5×23	1
88264122	47	O Ring Φ57×Φ1.5	1	88210171	112	Abnormity Bolt	1
88223055	48	Oil Tank Cover	1	88210070	113	Nut M6	1
88275046	49	Clutch Compages	1	88264137	114	Side Handle Ass'y Base	1
88264128	50	Shell cover	1	88301023	115	Orientation Staff Guage	1
88210133	51	Machine Screw ST5.0×25	4	88264139	116	Papilionaceous Bolt	1
88210119	51A	Machine Screw ST5.5×25	2	88264171	117	Side Handle	1
88224124	52	Crank Shaft	1	88264172	118	Side Handle Cover	1
88210168	53	Palt Key 4×12	1	88210035	119	Tapping Screw ST4.2×10	1
88264088	54	Oil Seal Ring Φ20×Φ28×4.5	2	88224132	120	Ratchet Ring Spring SeatΦ55xΦ40x1.5	1
88239005	55	Ball Bearing 6202 RS	1	88224131	121	Ratchet Ring SpringΦ2xΦ45.5x30	1
88224089	56	Bearings Cover	1	88264119	122	Ratchet Ring	1
88210188	56A	Hex.Socket Bolt M4x12(12.9)	2	88263126	123	Rubber Washer Φ31×Φ25×1.2	1
88224125	57	Crankshaft bush	1				