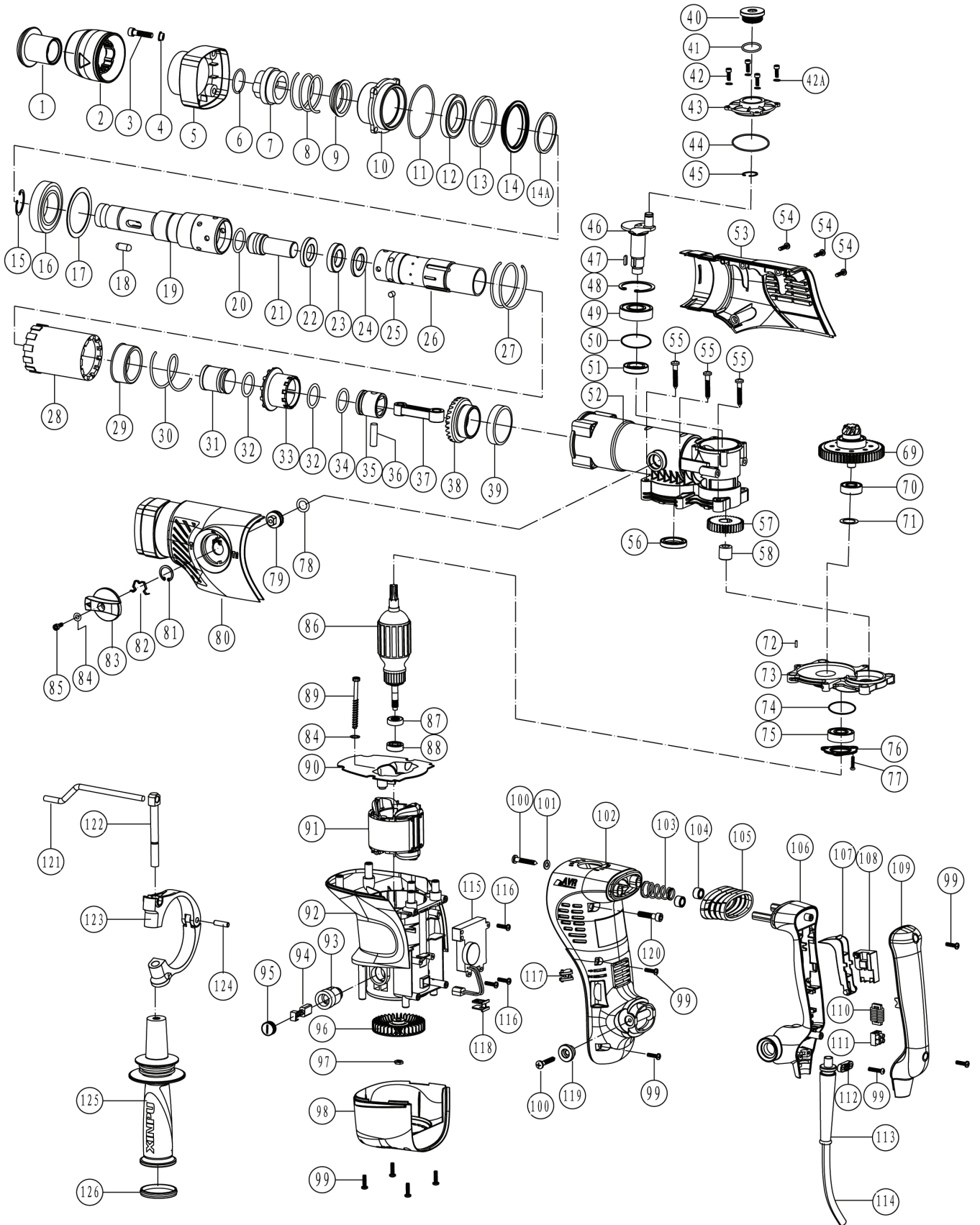


511188

PARTS BREAKDOWN



Component	Item Description
500060	Seal & O Ring Kit Assembly To Suit 511188 Rotary Demo Hammer
500071	Fan Cover To Suit 511188 Rotary Demo Hamer
500072	Main Handle To Suit 511188 Rotary Demo Hammer
500057	Gas Press Piston To Suit 511188 Rotary Demo Hammer
500058	Connecting Rod Assembly To To Suit 511188 Rotary Demo Hammer
500061	Seal Kit for Gear Box To Suit 511188 Rotary Demo Hammer
500064	Selector Knob Assembly To Suit 511188 Rotary Demo Hammer
500074	Main Handle Cover To Suit 511188 Rotary Demo Hammer
500076	Side Handle Assy To Suit 511188 Rotary Demo Hammer
500050	Turn Staff Armor To Suit 511188 Rotary Demo Hammer
500051	Lock Bead Sheath To Suit 511188 Rotary Demo Hammer
500052	Hammer Staff Sheath To Suit 511188 Rotary Demo Hammer
500053	Cylinder Assembly To Suit 511188 Rotary Demo Hammer
500059	Big Cone Shaped Gear To Suit 511188 Rotary Demo Hammer
500055	Impact Piston To Suit 511188 Rotary Demo Hammer
500056	Dial Sheath To Suit 511188 Rotary Demo Hammer
500062	Gear 35 Tooth To Suit 511188 Rotary Demo Hammer
500063	Clutch Compages To Suit 511188 Rotary Demo Hammer
500067	Brush Holder Pair Suit 511188 Rotary Demo Hammer
500068	Carbon Brush Pr To Suit 511188 Rotary Demo Hammer
500054	Impact Hammer To Suit 511188 Rotary Demo Hammer
500075	Speed Adjuster To Suit 511188 Rotary Demo Hammer
598344	Armature To Suit 511188 Rotary Demo Hammer

<u>500066</u>	Stator/Field To Suit 511188 Rotary Demo Hammer
<u>500073</u>	Switch Assy To Suit 511188 Rotary Demo Hammer
<u>500070</u>	Fan To Suit 511188 Rotary Demo Hammer
<u>500069</u>	Brush Cap Pair Suit 511188 Rotary Demo Hammer

Parts List

XP-No	Item No.	Part Describe	Quantity	XP-No	Item No.	Part Describe	Quantity
88264142	1	Turn Staff Armor	1	88234013	58	Needle Bearing BK1010	1
88264144	2	Flex Sheath	1	88275018	69	Clutch Compages	1
88210134	3	Hex .Socket Bolt M6x25(12.9)	4	88237004	70	Ball Bearing 629 (2RS C2)	1
88224134	4	Distance Piece M6	4	88224016	71	629 Bearing Washer $\Phi 25 \times \Phi 20 \times 0.5$	1
88264145	5	Front shade	1	88221017	72	Pin $\Phi 5 \times 14$	1
88224019	6	Steel Wire Block Ring $\Phi 2 \times \Phi 25.5$	1	88290099	73	Inner Cover	1
88275001	7	Lock Bead Sheath	1	88264028	74	O-Ring $\Phi 1.5 \times \Phi 31.5$	1
88224022	8	Lock Bead Sheath Spring $\Phi 2.5 \times \Phi 42.5 \times 74$	1	88237005	75	Ball Bearing 6201 DD	1
88224006	9	Spring Seat	1	88224017	76	6201 Bearing Hold Down Plate	1
88290097	10	Brainpan	1	88210106	77	Embedding Screws M4x8	3
88264003	11	O-Ring $\Phi 1.5 \times \Phi 60$	1	88264026	78	Fluorin O Ring $\Phi 2.5 \times \Phi 15$	1
88264004	12	Oil Seal Ring $\Phi 34.5 \times \Phi 53 \times 7$	1	88275024	79	Dial Staff Sheath	1
88264005	13	Spring Washer $\Phi 61 \times \Phi 52.5 \times 4.5$	1	88264148	80	Left Cover	1
88224007	14	"L" type Washer	1	88210094	81	Retaining Ring $\Phi 20$	1
88310013	14A	Woolen Washer $\Phi 50 \times \Phi 34.5 \times 5.5$	1	88224133	82	shrapnel	1
88210091	15	Retaining Ring $\Phi 35$	1	88264149	83	Function Knob	1
88237001	16	Ball Bearing 6007 (2RS C3)	1	88210090	84	Flat Washer $\Phi 5$	3
88224008	17	Vibration Reducing Washer $\Phi 62 \times \Phi 48.5 \times 1$	1	88210101	85	Hex .Socket Bolt M5x10	1
88224009	18	Lock Staff Bead $\Phi 8 \times 19.3$	2	88280127	86	Armature 220-240V	1
88275002	19	Hammer Staff Sheath	1	88243033	87	Magnetism Inductorium	1
88264178	20	Fluorin O Ring $\Phi 18 \times \Phi 3.5$	1	88236001	88	Ball Bearing NMB 608 D	1
88275003	21	Impact Hammer	1	88210043	89	Tapping Screw ST4.8x65	2
88275004	22	Washer A $\Phi 35.7 \times \Phi 19.6 \times 5$	1	88264150	90	Fan Guide	1
88264007	23	Buffering Washer $\Phi 35.5 \times \Phi 19.7 \times 8$	1	88280128	91	Stator 220-240V	1
88275005	24	Washer B $\Phi 35.7 \times \Phi 19.6 \times 3.5$	1	88264151	92	Housing	1
88224010	25	Cylinder Lock Bead $\Phi 5.8 \times 6$	4	88244007	93	Brush Holder	2
88275006	26	Cylinder	1	88244013	94	Carbon Brush	2
88224023	27	Flower Trough Sheath Spring $\Phi 2.5 \times \Phi 53.5 \times 39$	1	88244006	95	Brush Cap	2
88264008	28	Flower Trough Sheath	1	882890524	96	Fan	1
88224011	29	Spring sheath	1	88210206	97	M8x1x3.8 Nut	1
88224024	30	Dial Sheath Spring $\Phi 2.5 \times \Phi 41 \times 58$	1	88264152	98	Fan Cover	1
88275007	31	Impact Piston	1	88210038	99	Tapping Screw ST4.2x18	12
88264009	32	Fluorin O Ring $\Phi 3.5 \times \Phi 23$	2	88210119	100	Machine Screw ST5.5x25	4
88275008	33	Dial Sheath	1	88210201	101	Flat Washer $\Phi 5.5 \times \Phi 14 \times 1.5$	2
88264010	34	Fluorin O Ring $\Phi 1.5 \times \Phi 23$	1	88264153	102	Main Handle Seat	1
88264011	35	Gas Press Piston	1	88223057	103	Shock Absorption Spring	1
88223020	36	Piston Pin $\Phi 8 \times 26$	1	88264107	104	Shock Absorption Ferrule	2
88264012	37	Connecting Rod Ass'y	1	88264143	105	Shock Absorption Jacket	1
88275009	38	Big Cone-shaped Gear	1	88264154	106	Main Handle	1
88275012	39	Oiliness Bearing $\Phi 40 \times \Phi 50 \times 13$	1	88264156	107	Switch Trigger	1
88261055	40	Oil Tank Cover	1	88244035	108	Switch	1
88263126	41	Rubber Washer $\Phi 31 \times \Phi 25 \times 1.2$	1	88264155	109	Main Handle Cover	1
88210188	42	Hex. Socket Bolt M4x12(12.9)	4	88244008	110	Electricity Feels	1
88210111	42A	Flat Washer $\Phi 4$	4	88210076	111	Rivet	2
88264146	43	Shell cover	1	88261010	112	Cord Clip	1
88264014	44	O-Ring $\Phi 2.3 \times \Phi 53.2$	1	88261051	113	Cord Armor	1
88210092	45	Retaining Ring $\Phi 10$	1	88250000	114	Cord	1
88275010	46	Crank Shaft	1	88244039	115	Speed Adjuster	1
88210098	47	Palt Key 3x3x8	1	88210200	116	Cross recessed pan head tapping screws ST3.5x12	3
88210093	48	Retaining Ring $\Phi 40$	1	88264157	117	Indicator	1
88237002	49	Ball Bearing 6203 (2RS C0)	1	88264158	118	Limit block	1
88264015	50	O-Ring $\Phi 2 \times \Phi 39.7$	1	88223059	119	Main Handle Platen	2
88264017	51	Oil Seal Ring $\Phi 30 \times \Phi 17 \times 7$	1	88210007	120	Hex .Socket Bolt M6x20	2
88290098	52	Crank Housing	1	88224005	121	Orientation Staff Gauge	1
88264147	53	Right Cover	1	88224004	122	Handle bolt	1
88210132	54	Tapping Screw ST4.2x22	3	88290100	123	Handle Stay	1
88210199	55	Cross recessed pan head tapping screws ST3.5x12	6	88210099	124	Spring Column Pin $\Phi 6 \times 18$	1
88264016	56	Oil Seal Ring $\Phi 30 \times \Phi 20 \times 5.5$	1	88264159	125	Side Handle	1
88275016-1	57	Gear (35 Tooth)	1	88264172	126	Side Handle cover	1