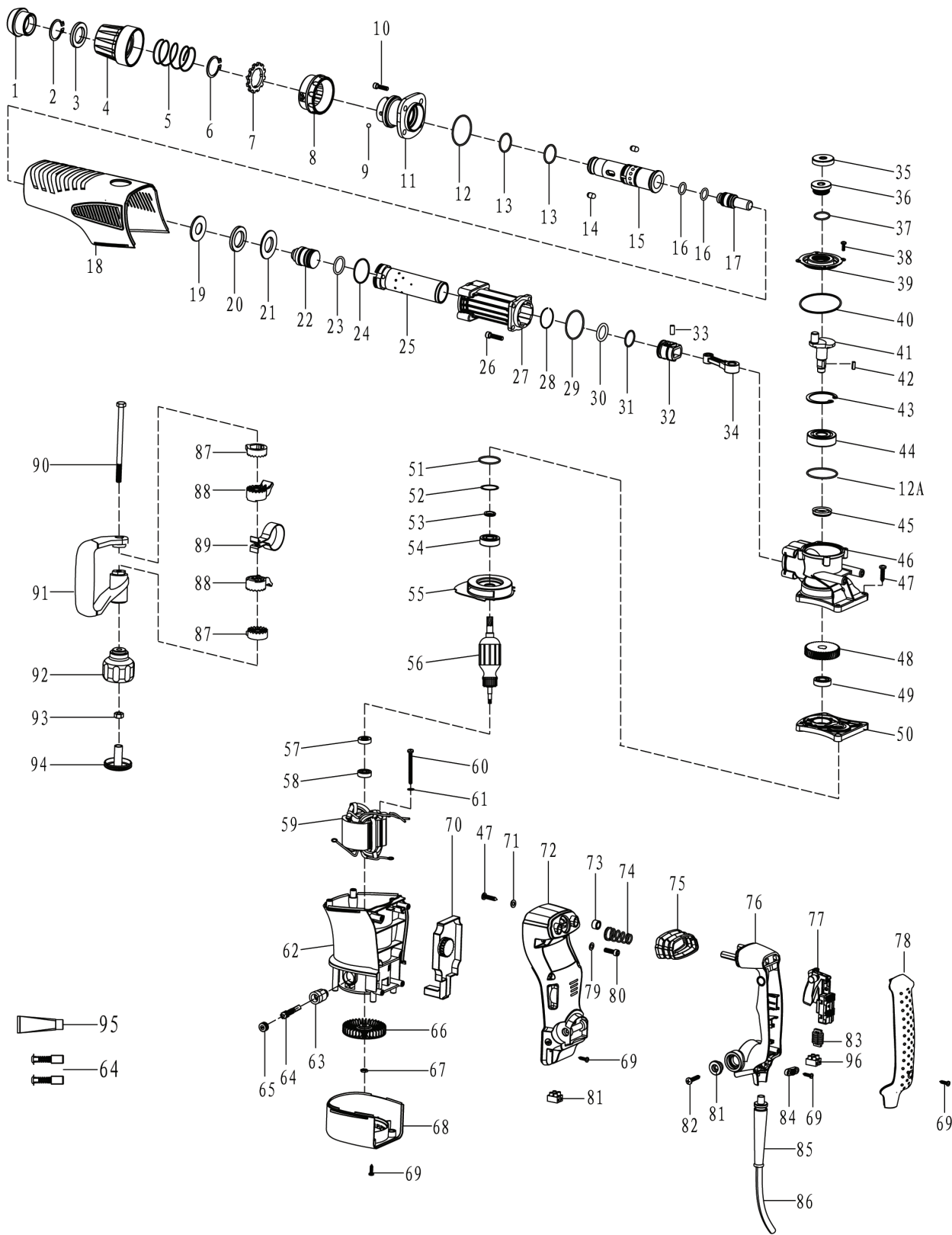


511187  
PARTS BREAKDOWN



Component	Item Description
<a href="#">500044</a>	Speed Adjuster TSQ05 To Suit 511187 Jack Hammer
<a href="#">500045</a>	Main Handle Seat To Suit 511187 Jack Hammer
<a href="#">500046</a>	Main Handle To Suit 511187 Jack Hammer
<a href="#">500048</a>	Main Handle Cover To Suit 511187 Jack Hammer
<a href="#">500049</a>	Side Handle Assembly To Suit 511187 Jack Hammer
<a href="#">500024</a>	Hammer Rod Protector To Suit 511187 Jack Hammer
<a href="#">500025</a>	Move Limited Ring To Suit 511187 Jack Hammer
<a href="#">500026</a>	Plum Blossom Chuck To Suit 511187 Jack Hammer
<a href="#">500027</a>	Move Limited Ring To Suit 511187 Jack Hammer
<a href="#">500029</a>	Hammer Rod Sleeve To Suit 511187 Jack Hammer
<a href="#">500032</a>	Gas Press Piston To Suit 511187 Jack Hammer
<a href="#">500033</a>	Connecting Rod Assy To Suit 511187 Jack Hammer
<a href="#">500034</a>	O Ring & Seal Kit To Suit 511187 Jack Hammer
<a href="#">500035</a>	Gear Box Seal Kit To Suit 511187 Jack Hammer
<a href="#">500036</a>	Gear No.48 Suit 511187 Jack Hammer
<a href="#">500039</a>	Brush Holders Pair 511187 Jack Hammer
<a href="#">500041</a>	Brush Caps Pair Suit 511187 Jack Hammer
<a href="#">500042</a>	Fan To Suit 511187 Jack Hammer
<a href="#">500043</a>	Fan Cover To Suit 511187 Jack Hammer
<a href="#">500047</a>	Switch To Suit 511187 Jack Hammer
<a href="#">500040</a>	Carbon Brush To Suit 511187 Jack Hammer
<a href="#">500028</a>	Lock Staff Bead To Suit 511187 Jack Hammer
<a href="#">500030</a>	Impact Hammer To Suit 511187 Jack Hammer

<a href="#"><u>500031</u></a>	Impact Piston To Suit 511187 Jack Hammer
<a href="#"><u>500037</u></a>	Armature To Suit 511187 Jack Hammer
<a href="#"><u>500038</u></a>	Stator/Field To Suit 511187 Jack Hammer

## Parts List

XP-No	Item No.	Part Describe	Price USD	XP-No	Item No.	Part Describe	Price USD
88263128	1	Hammer rod protector	0.70	88237008	49	Ball Bearing 6001 ZZ	0.97
88210140	2	Φ28 Retaining Ring	0.21	88290083	50	Inner Cover	1.99
88223066	3	Move limited ring	0.13	88263001	51	O-Ring Φ31.5×Φ2	0.21
88263133	4	Protective lining	1.68	88210063	52	Φ32 Urethane Washer	0.07
88223067	5	Flex Spring	0.31	88223003	53	Whorl Seal Ring	0.45
88210184	6	Φ32 Retaining Ring	0.06	88237005	54	Ball Bearing 6201 DD	1.01
88263134	7	Plum blossom chuck	0.18	88263137	55	Fan Guide	0.31
88263135	8	Move limited ring	1.89	88280115	56	Armature	14.38
88210182	9	Φ6 Steel Ball	0.02	88243033	57	Magnetism Inductarium	0.66
88210016	10	Hex. Socket Bolt M8×30(12.9)	0.19	88236001	58	Ball Bearing NMB 608	1.76
88273034	11	Front Cover	4.79	88280116	59	Stator	9.94
88263149	12	O-Ring Φ46.5×Φ2.2	0.17	88210042	60	ST4.8×58 Tapping Screw	0.37
88263006	12A	O-Ring Φ46.5×Φ2	0.16	88210055	61	Φ5 Flat Washer	0.08
88263129	13	Fluorin O Ring Φ27.5×Φ2	0.59	88263138	62	Housing Ass'y	5.06
88223068	14	Lock Staff Bead	0.26	88243007	63	Brush Holder	0.44
88273035	15	Hammer rod sleeve	7.44	88243028	64	Carbon Brush	0.59
88263148	16	Fluorin O Ring Φ2.62×Φ15.54	0.44	88243001	65	Brush Cap	0.10
88273036	17	Impact Hammer	2.36	882890524	66	Fan	0.79
88263136	18	Cover(无字)	3.34	88210187	67	M8×1×3.8 Nut ( non standard)	0.06
88273037	19	Hammer ring	0.74	88263140	68	Fan Cover	1.52
88263131	20	Shock Absorption Washer	1.69	88210115	69	ST4.2×16 Tapping Screw	0.01
88273038	21	Limit ring	0.93	88243032	70	Speed Adjuster TSQ 05	8.74
88273039	22	Impact Piston	1.72	88210183	71	Φ5.5×Φ12×1 Flat Washer	0.01
88264009	23	Fluorin O Ring Φ3.5×Φ23	1.03	88263141	72	Main Handle Seat	3.49
88263034	24	O-Ring Φ36×Φ2	0.08	88264107	73	Shock Absorption Ferrule	0.12
88273040	25	Cylinder	6.06	88223057	74	Shock Absorption Spring	0.46
88210134	26	Hex. Socket Bolt M6×25(12.9)	0.09	88263132	75	Shock Absorption Jacket	1.01
88290081	27	Aluminum Head	4.41	88263142	76	Main Handle	1.95
88223072	28	Steel Wire Block Ring Φ32×Φ1.5	0.07	88243034	77	Switch	3.66
88263009	29	O-Ring Φ44×Φ2.2	0.12	88263143	78	Main Handle Cover	1.56
88263098	30	Fluorin O Ring Φ22×Φ4	0.96	88210056	79	Φ6 Flat Washer	0.11
88263099	31	O-Ring Φ24×Φ1.8	0.07	88210007	80	Hex. Socket Bolt M6×20	0.19
88263097	32	Gas Press Piston	0.36	88223059	81	Main Handle Platen	0.73
88223020	33	Piston PinΦ8×26	0.31	88210119	82	Tapping ScrewST5.5×25	0.05
88263096	34	Connecting Rod Ass'y	2.83	88244018	83	0.18μH Electricity Feels	0.44
88263124	35	Adorn Cover	0.22	88261010	84	Cord Clip	0.11
88223055	36	Oil Tank Cover	1.20	88261051	85	Cord Armor	0.40
88261054	37	O-Ring Φ20×Φ2	0.13	88250000	86	Cord	5.51
88210188	38	Hex .Socket Bolt M4×12(12.9)	0.04	88263075	87	Disk with gap	0.14
88223069	39	Shell cover	0.93	88263144	88	Clamping	0.18
88263003	40	O-Ring Φ55×Φ2.5	0.21	88223070	89	Fixed belt	0.44
88273002	41	Crank Shaft	2.50	88210121	90	Hexagon head bolt M8×130	0.73
88210168	42	Palt Key 4×12	0.03	88263077	91	Side Handle	4.19
88210067	43	Φ47 Retaining Ring	0.20	88263078	92	Function Knob	0.76
88237007	44	Ball Bearing 6303 RS	1.72	88320045	93	Nut M8×6.4	0.07
88263005	45	Oil Seal Ring Φ18×Φ30×6	0.86	88263079	94	Function Knob cover	0.29
88290082	46	Decelerate Box	5.22	88304012	95	Oil Bottle	1.39
88210181	47	Tapping Screw ST5.5×30	0.06	88210076	96	Rivet	0.16
88273041	48	Gear	2.15				