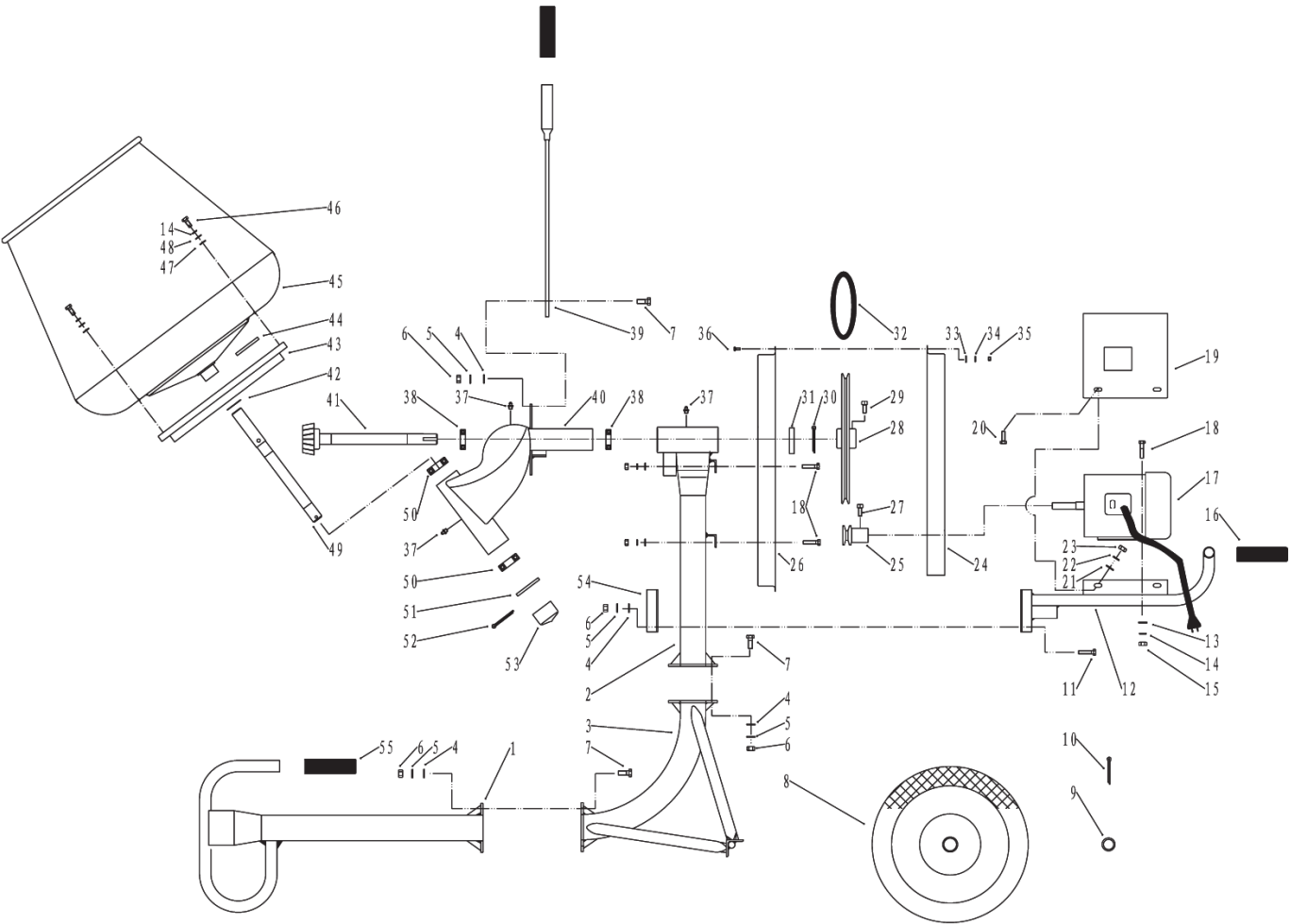


511180
PARTS BREAKDOWN



Component	Item Description
<u>500454</u>	Motor Electric 450W To Suit 511180 Concrete Mixer
<u>500455</u>	Pulley Outer Cover To Suit 511180 Concrete Mixer
<u>500457</u>	Pulley Inside Cover To Suit 511180 Concrete Mixer
<u>500462</u>	Gear Shaft Unbelliform To Suit 511180 Concrete Mixer
<u>500459</u>	Belt Suit 511180 Concrete Mixer A1200
<u>500460</u>	Oil Cup To Suit 511180 Concret Concrete Mixer
<u>500456</u>	Motor Pulley To Suit 511180 Concrete Mixer
<u>500458</u>	Belt Pulley To Suit 511180 Concrete Mixer
<u>500453</u>	Pneumatic Wheel To Suit 511180 511182 Concrete Mixer Also use 500476
<u>500476</u>	Wheel Pneumatic to suit 511182 511180 Concrete Mixer Also use 500453
<u>500461</u>	Handle To Suit 511180 Concrete Mixer
<u>500463</u>	Motor Switch Assembly To Suit 511180 Concrete Mixer

NO.	Name	DESCRIPTION	QUANTITY
1	Floor support assembly		1
2	Vertical support assmebly		1
3	wheel axle		1
4	flat washer	_10	16
5	spring washer	_10	16
6	hex nut	M10	16
7	hex bolt	M10*25	12
8	wheel	3.25-8	2
9	wheel stop washer	_16	2
10	split pin	_3*30	2
11	hex bolt	M10*35	4
12	motor stand		1
13	flat washer	_8	16
14	spring washer	_8	14
15	hex nut	M8	8
16	handle cover		4
17	motor		1
18	hex bolt	M8*20	8
19	motor cover		1
20	hex bolt	M6*20	4
21	flat washer	_6	8
22	spring washer	_6	4
23	hex nut	M6	4
24	pulley outer cover		1
25	motor pulley		1
26	pulley inside cover		1
27	hex bolt	M8*20	1
28	belt pulley		1
29	hex bolt	M8*20	2
30	split pin	_5*35	1
31	stop washer		1
32	belt	A 1150	1
33	flat washer	_5	7
34	spring washer	_5	7
35	hex nut	M5	7
36	cross head bolt	M5*12	7
37	oil cup		3
38	bearing	6005-2RS	2
39	handle		2
40	drum support assembly		1
41	umbelliform gear shaft		1
42	adjust washer		1
43	gear ring		1
44	spring iron pin	_8*40	1
45	drum assembly		1
46	hex bolt	M8*20	6
47	leather gasket		6
48	flat washer	_8	6
49	drum shaft		1
50	bearing	6205-2RS	2
51	stop washer		1
52	split pin	_6*35	1
53	dust proof cap		1
54	lock plate		1
55	handle cover		1