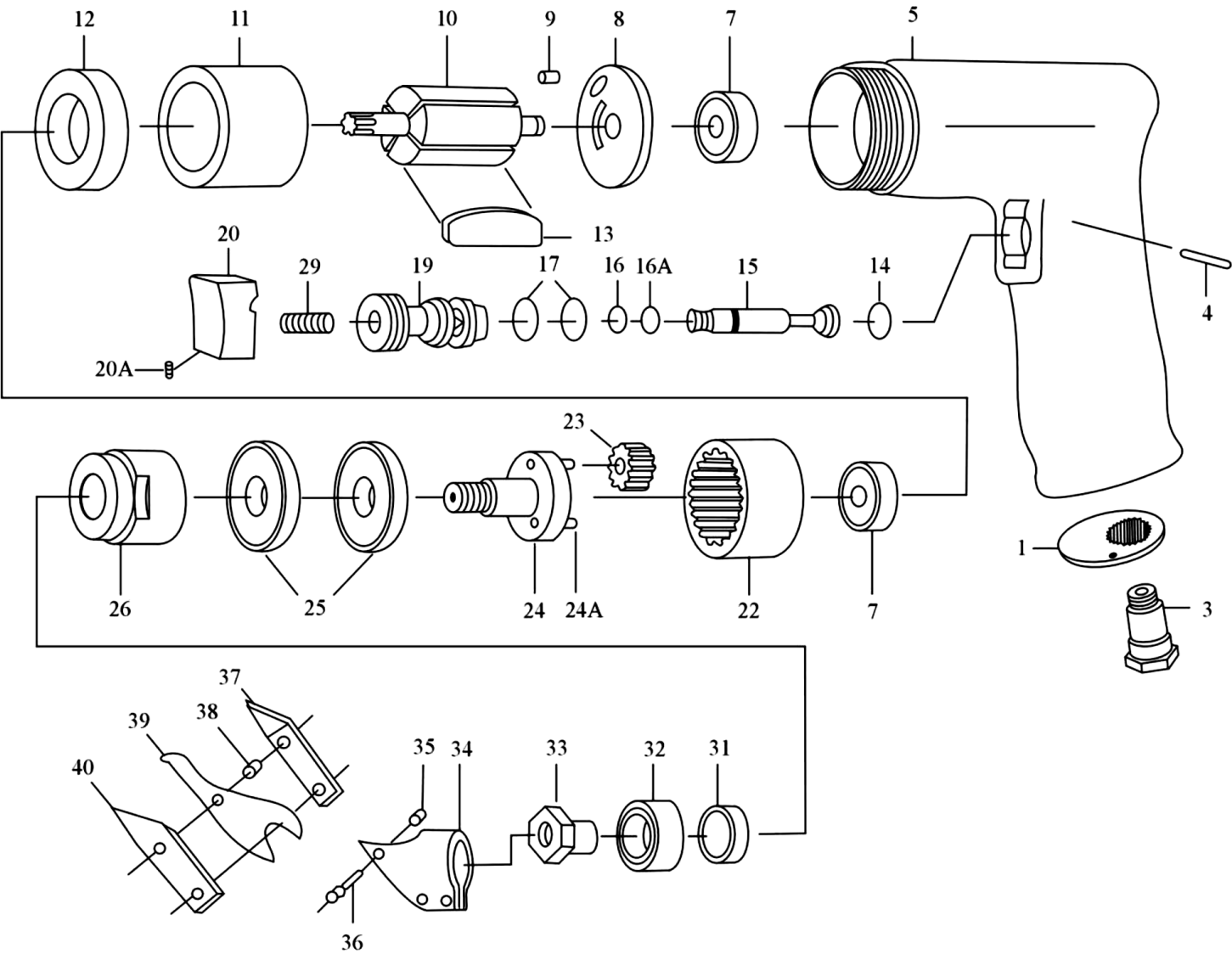


534364
PARTS BREAKDOWN



Component	Item Description
536624	Air Shear Replacement Blades Suit 534364 534981 530505
534962	Air Shear Planet Cage 534364
534963	Air Shear Internal Gear 534364
532585	Air Shear 18Gge-Trigger 534364-13
532597	Air Shear 18Gge-Screw 534364-14
532598	Air Shear 18Gge-Valve Body 534364-12
532599	Air Shear 18Gge-"O" Rings 534364-11
532600	Air Shear 18Gge-Valve Stems 534364-10
532601	Air Shear 18Gge-"O" Ring 534364-09
532602	Air Shear 18Gge-"O" Ring 534364-08
532603	Air Shear 18Gge-Spring 534364-07
532604	Air Shear 18Gge-Rotor Blades 534364-08
534915	Air Shear Replacement Blades Suit 534364

AT-6021

Index No.	Parts No.	Description	Q'ty
1	306001	Exhaust Diffuser	1
3	306003	Air Inlet	1
4	SP-25220	Pin (M2.5x22)	1
5	306005	Motor Housing	1
5A	SB-008	Steel Ball (1/4")	1
7	BB-06261	Ball Bearing(626zz)	2
8	302027	End Plate	1
9	SP-25060	Pin (2.5x6)	1
10	302024	Rotor	1
11	302026	Cylinder	1
12	302023	Front End Plate	1
13	302025	Rotor Blade	4
14	ORP-0140	O-Ring(P14)	1
15	305022	Valve Stem	1
16	ORP-0035	O-Ring(3.5*1.5)	1
16A	317005	O-Ring(3.9x2.25x2)	1
17	ORP-0120	O-Ring (P12)	2
19	306019	Valve Body	1
20	305020	Trigger	1

Index No.	Parts No.	Description	Q'ty
20A	SS-0406A	Set Screw(M4x6)	1
22	302021	Internal Gear	1
23	305007	Planet Gage	3
23A	305007S	Planet Gage(306S)	3
24	306024	Planet Gage	1
24A	NR-40138	Neddle Roller(4x13.8)	3
25	BB-62012C	Ball Bearing (6201zz)	2
26	306026	Clamp Nut	1
29	305021	Spring	1
31	312003	Spacer	1
32	BB-R82	Bearing	1
33	306M33	Excentric Nut	1
34	306M34	Cutter-Housing	1
35	306M35	Lock Nut(3/16"-24UNC)	3
36	306M36	Lock Screw(3/16"-24UCNx30)	3
37	306M37A	Left Blade	1
38	306M38	Spacer	2
39	306M39A	Center Blade	1
40	306M40A	Right Blade	1