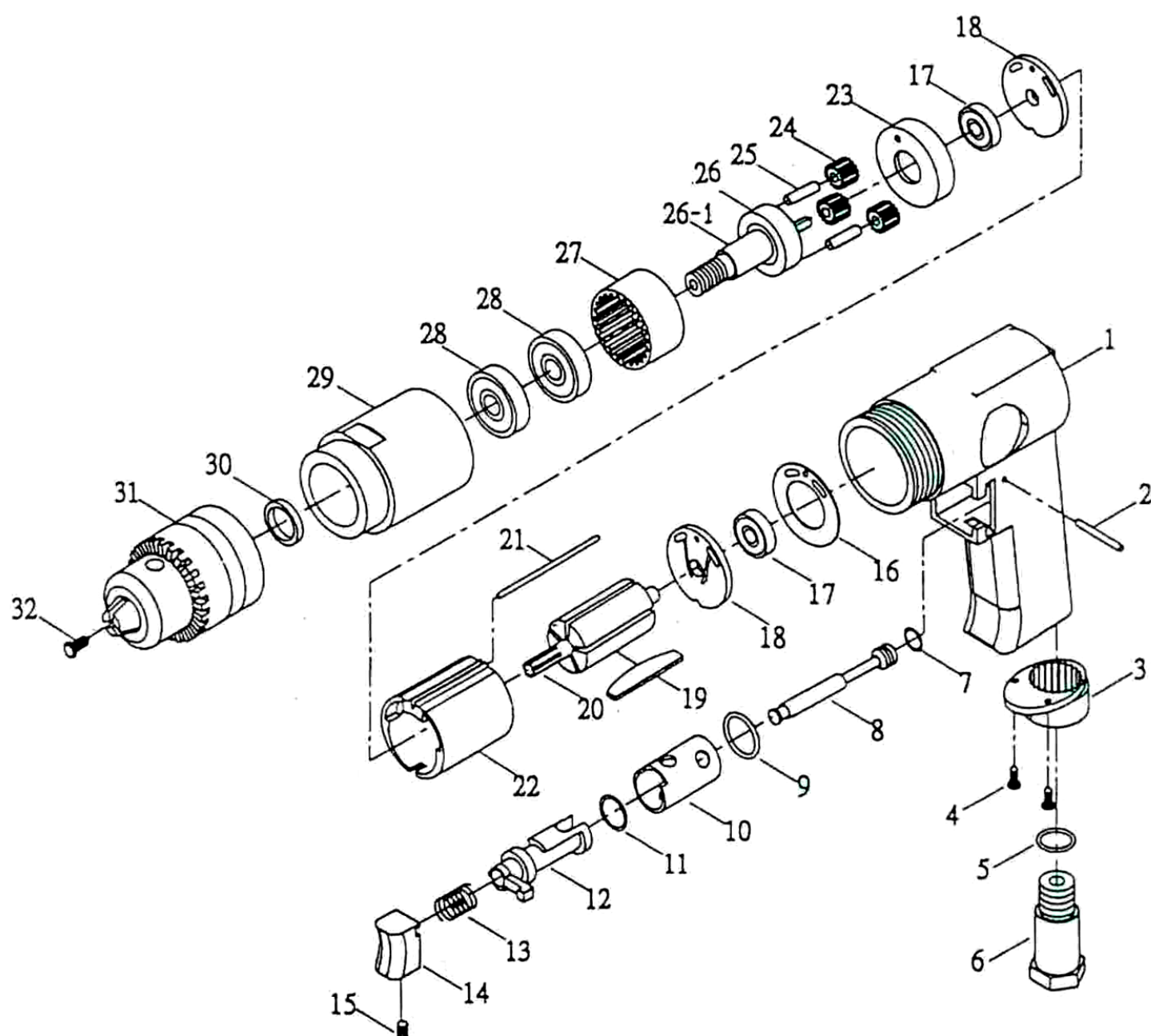


534670

PARTS BREAKDOWN



| Component | Item Description |
|------------------------|---------------------------------------|
| 536963 | Air Drill 3/8"-Inlet Fitting 534670-6 |

Parts list of AT-4031

| Parts No | Name of parts | Perset |
|----------|-----------------|--------|
| KL-30401 | Housing | 1 |
| KL-30402 | Spring Pin | 1 |
| KL-30403 | Muffler | 1 |
| KL-30404 | Screw | 2 |
| KL-30405 | "O"Ring | 1 |
| KL-30406 | Inlet | 1 |
| KL-30407 | "O"Ring | 1 |
| KL-30408 | Throttle Pin | 1 |
| KL-30409 | "O"Ring | 1 |
| KL-30410 | Reverse Bushing | 1 |
| KL-30411 | "O"Ring | 1 |
| KL-30412 | Reverse Lever | 1 |
| KL-30413 | Spring | 1 |
| KL-30414 | Trigger | 1 |
| KL-30415 | Screw | 1 |
| KL-30416 | Motor Packing | 1 |
| KL-30417 | Bearing | 2 |

| Parts No | Name of parts | Perset |
|------------|---------------|--------|
| KL-30418 | End Plate | 2 |
| KL-30419 | Rotor Blade | 5 |
| KL-30420 | Rotor | 1 |
| KL-30421 | Pin | 1 |
| KL-30422 | Cylinder | 1 |
| KL-30423 | Spacer | 1 |
| KL-30424 | Gear | 3 |
| KL-30425 | Pin | 3 |
| KL-30426 | Gear Plate | 1 |
| KL-30426-1 | Work Spindle | 1 |
| KL-30427 | Internal Gear | 1 |
| KL-30428 | Bearing | 2 |
| KL-30429 | Clamp Nut | 1 |
| KL-30430 | Washer | 1 |
| KL-30431 | Chuck 3/8" | 1 |
| KL-30432 | Screw | 1 |
| | | |