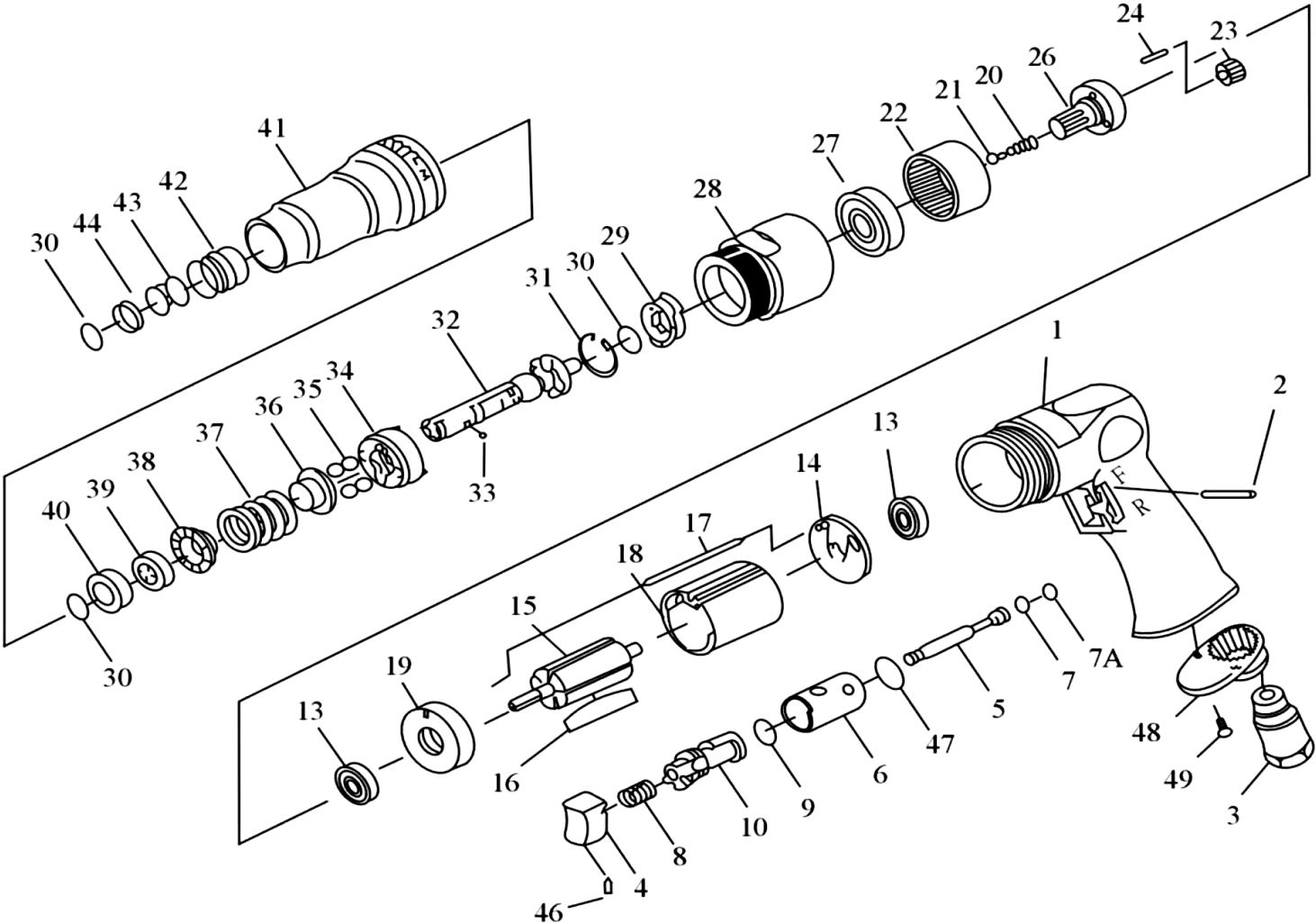


534662  
PARTS BREAKDOWN



Component	Item Description
<a href="#">576574</a>	A/Sdriver 800/1800 Washer 534662/663
<a href="#">576575</a>	A/Sdriver 800/1800 Washer 534662/663
<a href="#">534964</a>	A/Sdriver 800/1800 Cam Spindle 534662/663
<a href="#">534965</a>	A/Sdriver 800/1800 S/Ball Set 534662/663
<a href="#">534966</a>	A/Sdriver 800/1800 Adj Nut 534662/663
<a href="#">534967</a>	A/Sdriver 800/1800 Spacer 534662/663
<a href="#">534975</a>	A/Sdriver 800/1800 C Ring 534662/663
<a href="#">534869</a>	A/Sdriver 800/1800 Ball Retain 534662/663
<a href="#">534871</a>	A/Sdriver 800/1800 Washer 534662/663
<a href="#">534850</a>	A/Sdriver 800/1800 Pin 534662/663
<a href="#">534851</a>	A/Sdriver 800/1800 Trigger 534662/663
<a href="#">534852</a>	A/Sdriver 800/1800 Valve Stem 534662/663
<a href="#">534853</a>	A/Sdriver 800/1800 Rev Bushing 534662/663
<a href="#">534854</a>	A/Sdriver 800/1800 O Ring 534662/663
<a href="#">534855</a>	A/Sdriver 800/1800 Valve Sprin 534662/663
<a href="#">534856</a>	A/Sdriver 800/1800 O Ring 534662/663
<a href="#">534857</a>	A/Sdriver 800/1800 Reverse Lev 534662/663
<a href="#">534858</a>	A/Sdriver 800/1800 Mtr Gasket 534662/663
<a href="#">534859</a>	A/Sdriver 800/1800 R Blade (5) 534662/663
<a href="#">534860</a>	A/Sdriver 800/1800 Pin 534662/663
<a href="#">534861</a>	A/Sdriver 800/1800 Cylinder 534662/663
<a href="#">534862</a>	A/Sdriver 800/1800 Sprng Guide 534662/663
<a href="#">534863</a>	A/Sdriver 800/1800 Intern Gear 534662/663

<a href="#"><u>534864</u></a>	A/Sdriver 800/1800 Plan Gea(3) 534662/663
<a href="#"><u>534865</u></a>	A/Sdriver 800/1800 Pin (3) 534662/663
<a href="#"><u>534866</u></a>	A/Sdriver 800/1800 Spacer (3) 534662/663
<a href="#"><u>534867</u></a>	A/Sdriver 800/1800 Retain Ring 534662/663
<a href="#"><u>534868</u></a>	A/Sdriver 800/1800 Steel Ball 534662/663
<a href="#"><u>534870</u></a>	A/Sdriver 800/1800 Spring 534662/663
<a href="#"><u>532938</u></a>	A/Sdriver 800/1800 Rotor 534662/534663

**AT-4080**

INDEX .NO	PARTS.NO.	DESCRIPTION	Q'TY
1	305017	HOUSING	1
2	SP-25220	PIN	1
3	305031	AIR INLET	1
4	305020	TRIGGER	1
5	305022	VALVE STEM	1
6	305026	REVERSE BUSHING	1
7	ORP-0035	O-RING	1
7A	317005	O-RING(3.9*2.25*2)	1
8	305021	VALVE SPRING	1
9	ORP-0090	O-RING	1
10	305024	REVERSE LEVER	1
13	BB-06262	BALL BEARING(2)	2
14	305011	END PLATE	1
15	305012	ROTOR	1
16	302025	ROTOR BLADE(5)	5
17	305014	PIN	1
18	305015	CYLINDER	1
19	305010	SPACER	1
20	332020	SPRING	1
21	332021	SPRING GUIDE	1
22	302021	INTERNAL GEAR	1
23	305007S	PLANET GEAR(3)	3
24	NR-40138	PIN( $\psi$ 4*13.8)	3

INDEX. NO	PARTS.NO.	DESCRIPTION	Q'TY
26	332026	WORK SPINDLE	1
27	BB-62012	BALL BEARING	1
28	332028	CLAMP NUT	1
29	332029	DRIVE DOG	1
30	332030	RETAINING RING(3)	3
31	RTW021	RETAINING RING	1
32	332032	CAM SPINDLE	1
33	SB-004	STEEL BALL	1
34	332034	CLUTCH CARRIER	1
35	SB-008	STEEL BALL(4)	4
36	332036	WASHER	1
37	332037	SPRING	1
38	332038	WASHER	1
39	332039	ADJUST NUT	1
40	332040	SPACER	1
41	332041	CLUTCH HOUSING	1
42	332042	BALL RETAINER	1
43	332043	SPRING	1
44	332044	WASHER	1
46	SS-0408A	SET SCREW	1
47	ORP-0140	O-RING	1
48	305029	EXHAUST DIFFUSER	1
49	I1-3008B	SCREW(2)	2