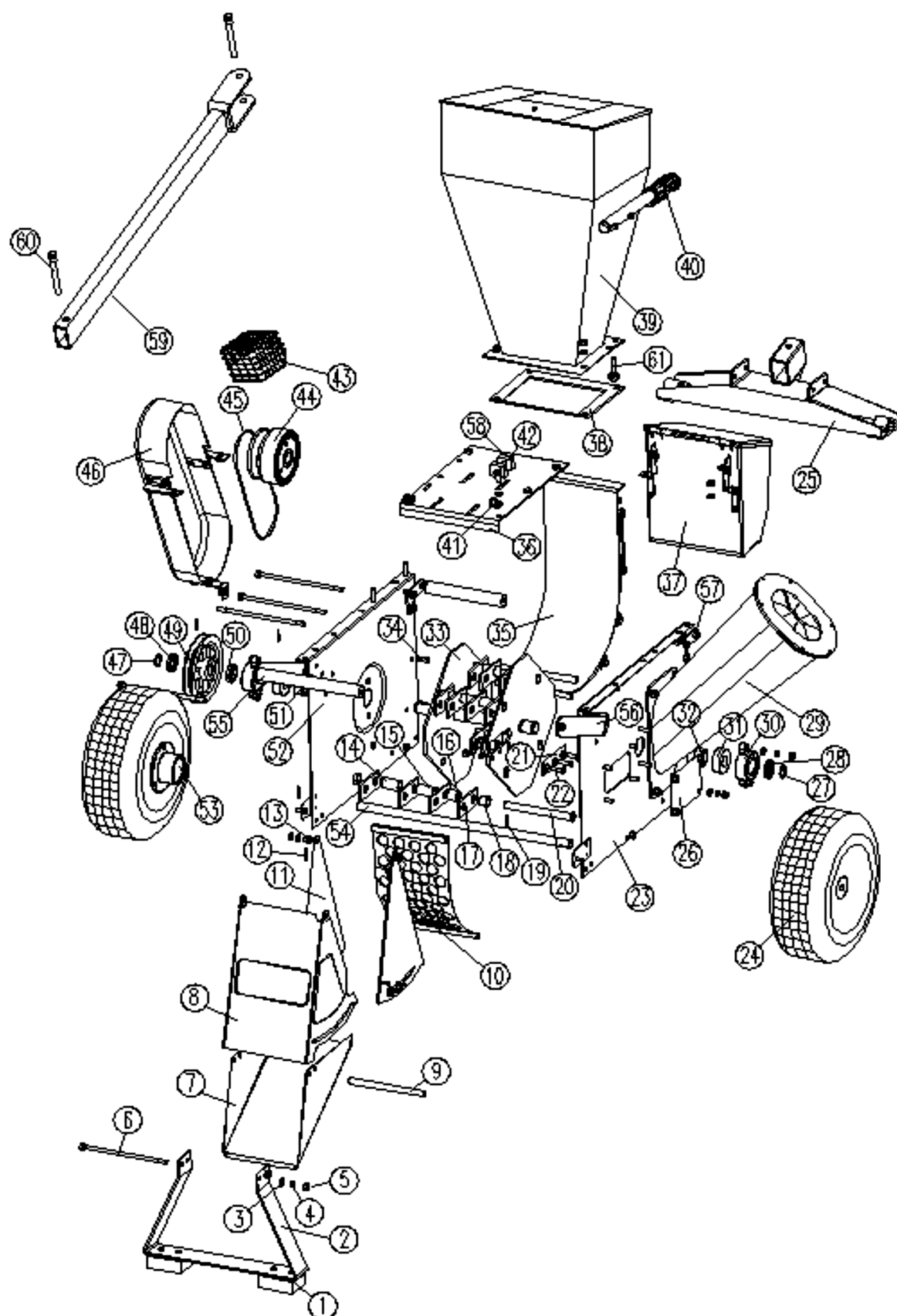


597468

PARTS BREAKDOWN



| Component | Item Description |
|------------------------|--------------------------------------------------------------------------------|
| 597467 | Chipper & Shredder Less Motor 13HP Honda Motor To be Fitted Makes Model 597468 |
| 597655 | Leg Suit 597468-2 13HP Chipper & Shredder Same as 597677 |
| 597664 | Hammer Axle Suit 597468-20 13HP Chipper & Shredder Same as 597685 |
| 597665 | Blade Suit 597468-21 13HP Chipper & Shredder Same as 597686 |
| 597666 | Wheel Suit 597468-24 13HP Chipper & Shredder |
| 597667 | Ball Bearing Suit 597468-31 2205 13HP Chipper/Shredder Same as 597690 |
| 597668 | Impeller Suit 597468-33 13HP Chipper & Shredder |
| 597673 | Bearing Seat Suit 597468-30 13HP Chipper & Shredder |
| 597674 | Wheel Tube To Suit 597468 Chipper & Shredder |
| 597735 | Pulley Cover Suit 597468-46 Toolex 13HP Chipper & Shredder |
| 597654 | Rubber Foot Suit 597468-1 13HP Chipper & Shredder Same as 597676 |
| 597656 | Moveable Door Suit 597468-8 13HP Chipper & Shredder |
| 597657 | Screen To Suit 597468 13HP 13HP Chipper & Shredder |
| 597658 | Spacer I Suit 597468-14 13HP Chipper & Shredder |
| 597659 | Spacer II Suit 597468-15 13HP Chipper & Shredder |
| 597660 | Spacer III Suit 597468-16 13HP Chipper & Shredder |
| 597661 | Hammer Suit 597468-17 13HP Chipper & Shredder Same as 597682 |
| 597662 | Spacer VI Suit 597468-18 13HP Chipper & Shredder |
| 597663 | Roll Pin Suit 597468-19 13HP Chipper & Shredder Same as 597684 |
| 597669 | Rubber Gasket Suit 597468-38 Chipper & Shredder Same as 597692 |
| 597670 | Burn Proof Net Suit 597468-43 13HP Chipper & Shredder Same as 597694 |
| 597671 | Clutch Suit 597468-44 13HP Chipper & Shredder |
| 597675 | Wheel Axle Suit 597468-54 13HP Chipper & Shredder |

[597672](#)

V Belt Suit 597468-45 B1092LI 13HP Chipper & Shredder

| No. | Description | Qty | No. | Description | Qty |
|-----|---------------------|------|-----|----------------------|------|
| 1 | rubber foot | 2 | 32 | spacer(right) | 1 |
| 2 | leg | 1 | 33 | impeller | 1 |
| 3 | flat washer | many | 34 | key | 1 |
| 4 | hex nut | many | 35 | rear board | 1 |
| 5 | lock washer | many | 36 | engine seat | 1 |
| 6 | hex bolt | 1 | 37 | tool box | 1 |
| 7 | discharge chute | 1 | 38 | rubber gasket | 1 |
| 8 | movable door | 1 | 39 | hopper | 1 |
| 9 | tube | 3 | 40 | handles | 2 |
| 10 | screen | 1 | 41 | hook | 2 |
| 11 | side door plate | 2 | 42 | hex bolt | many |
| 12 | hitch pin | 2 | 43 | burn-proof net | 1 |
| 13 | door axle | 2 | 44 | clutch | 1 |
| 14 | spacer I | 4 | 45 | V-belt | 1 |
| 15 | spacer II | 8 | 46 | pulley cover | 1 |
| 16 | spacer III | 4 | 47 | Belt cover bracket | 1 |
| 17 | hammer | 16 | 48 | spacer | 1 |
| 18 | spacer VI | 4 | 49 | pulley | 1 |
| 19 | roll pin | 4 | 50 | special washer(left) | 1 |
| 20 | hammer axle | 4 | 51 | washer (right) | 1 |
| 21 | blade | 2 | 52 | box frame side | 1 |
| 22 | flat HD SCR | 6 | 53 | wheel tube | 2 |
| 23 | box frame side left | 1 | 54 | wheel axel | 1 |
| 24 | wheel | 2 | 55 | front handle | 2 |
| 25 | wheel support | 1 | 56 | handle part | 2 |
| 26 | blade cover plate | 1 | 57 | box holder | 2 |
| 27 | wire circ lip 1 | 1 | 58 | adjusting block | 2 |
| 28 | Washer (right) | 1 | 59 | hitch trailer | 1 |
| 29 | chipping chute | 1 | 60 | hitch pin | 2 |
| 30 | bearing seat | 2 | 61 | adjusting bolt | 2 |
| 31 | ball bearing | 2 | 62 | | |