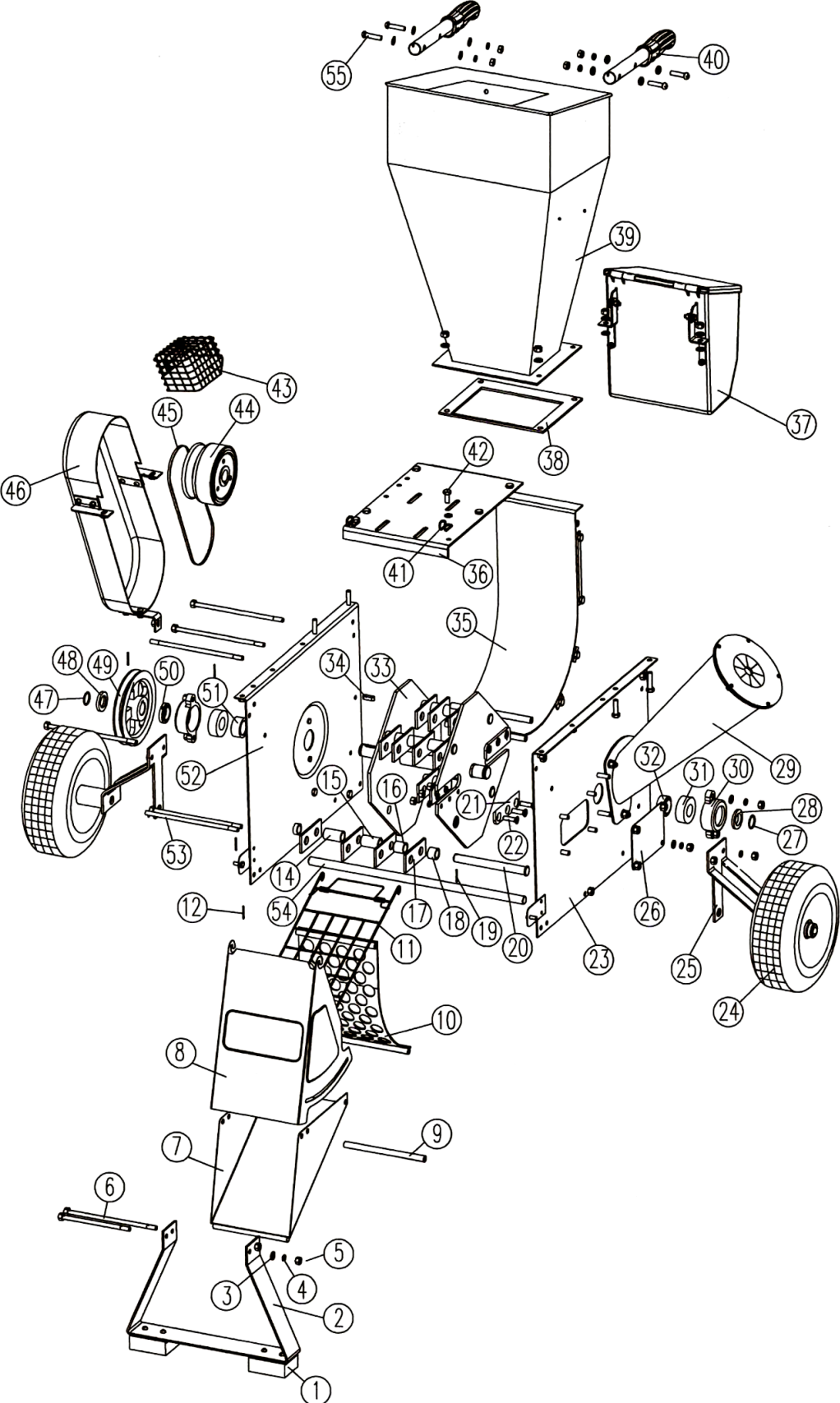


597466
PARTS BREAKDOWN



Component	Item Description
597465	Chipper & Shredder Less Motor 6.5HP Honda Engine To Fit Makes Model 597466
597683	Spacer VI To Suit 597466 511463 6.5HP Chipper & Shredder
597685	Hammer Axle To Suit 597466 511463 6.5HP Chipper & Shredder Same as 597664
597687	Flat HD SCR To Suit 597466 511463 6.5HP Chipper & Shredder
597690	Ball Bearing To Suit 597466 511463 6.5HP Chipper & Shredder Same as 597667
597677	Leg To Suit 597466 511463 6.5HP Chipper & Shredder Same as 597655
597680	Spacer II To Suit 597466 511463 6.5HP Chipper & Shredder
597681	Spacer III To Suit 597466 511463 6.5HP Chipper & Shredder
597682	Hammer To Suit 597466 511463 6.5HP Chipper & Shredder Same as 597661
597684	Roll Pin To Suit 597466 511463 6.5HP Chipper & Shredder Same as 597663
597686	Blade To Suit 597466 511463 6.5HP Chipper & Shredder Same as 597665
597688	Wheel To Suit 597466 511463 6.5HP Chipper & Shredder
597689	Wheel Support To Suit 597466 511463 6.5HP Chipper & Shredder
597691	Impeller To Suit 597466 511463 6.5HP Chipper & Shredder
597692	Rubber Gasket To Suit 597466 511463 6.5HP Chipper & Shredder Same as 597669
597693	Handle Suit 597466-40 511463 6.5HP Chipper & Shredder
597695	Clutch To Suit 597466 511463 6.5HP Chipper & Shredder
597696	V - Belt To Suit 597466 511463 6.5HP Chipper & Shredder
597697	Pulley Cover To Suit 597466 511463 6.5HP Chipper & Shredder
597698	Pulley To Suit 597466 511463 6.5HP Chipper & Shredder
597676	Rubber Foot To Suit 597466 511463 6.5HP Chipper & Shredder Same as 597654
597678	Screen To Suit 597466 511463 6.5HP Chipper & Shredder
597679	Spacer I To Suit 597466 511463 6.5HP Chipper & Shredder

[597694](#)

Burn Proof Net To Suit 597466 511463 6.5HP Chipper & Shredder Same as 597670

No.	Description	Qty	No.	Description	Qty
1	rubber foot	2	32	spacer(right)	1
2	leg	1	33	impeller	1
3	flat washer	many	34	key	1
4	hex nut	many	35	rear board	1
5	lock washer	many	36	engine seat	1
6	hex bolt	1	37	tool box	1
7	discharge chute	1	38	rubber gasket	1
8	movable door	1	39	hopper	1
9	tube	3	40	handles	2
10	screen	1	41	hook	2
11	side door plate	--	42	hex bolt	many
12	hitch pin	2	43	burn-proof net	1
13	door axle	2	44	clutch	1
14	spacer I	4	45	V-belt	1
15	spacer II	8	46	pulley cover	1
16	spacer III	4	47	Belt cover bracket	1
17	hammer	16	48	spacer	1
18	spacer VI	4	49	pulley	1
19	roll pin	4	50	special washer(left)	1
20	hammer axle	4	51	washer (right)	1
21	blade	2	52	box frame side	1
22	flat HD SCR	6	53	wheel tube	2
23	box frame side left	1	54	wheel axel	1
24	wheel	2	55	front handle	2
25	wheel support	1			
26	blade cover plate	1			
27	wire circ lip 1	1			
28	Washer (right)	1			
29	chipping chute	1			
30	bearing seat	2			
31	ball bearing	2			