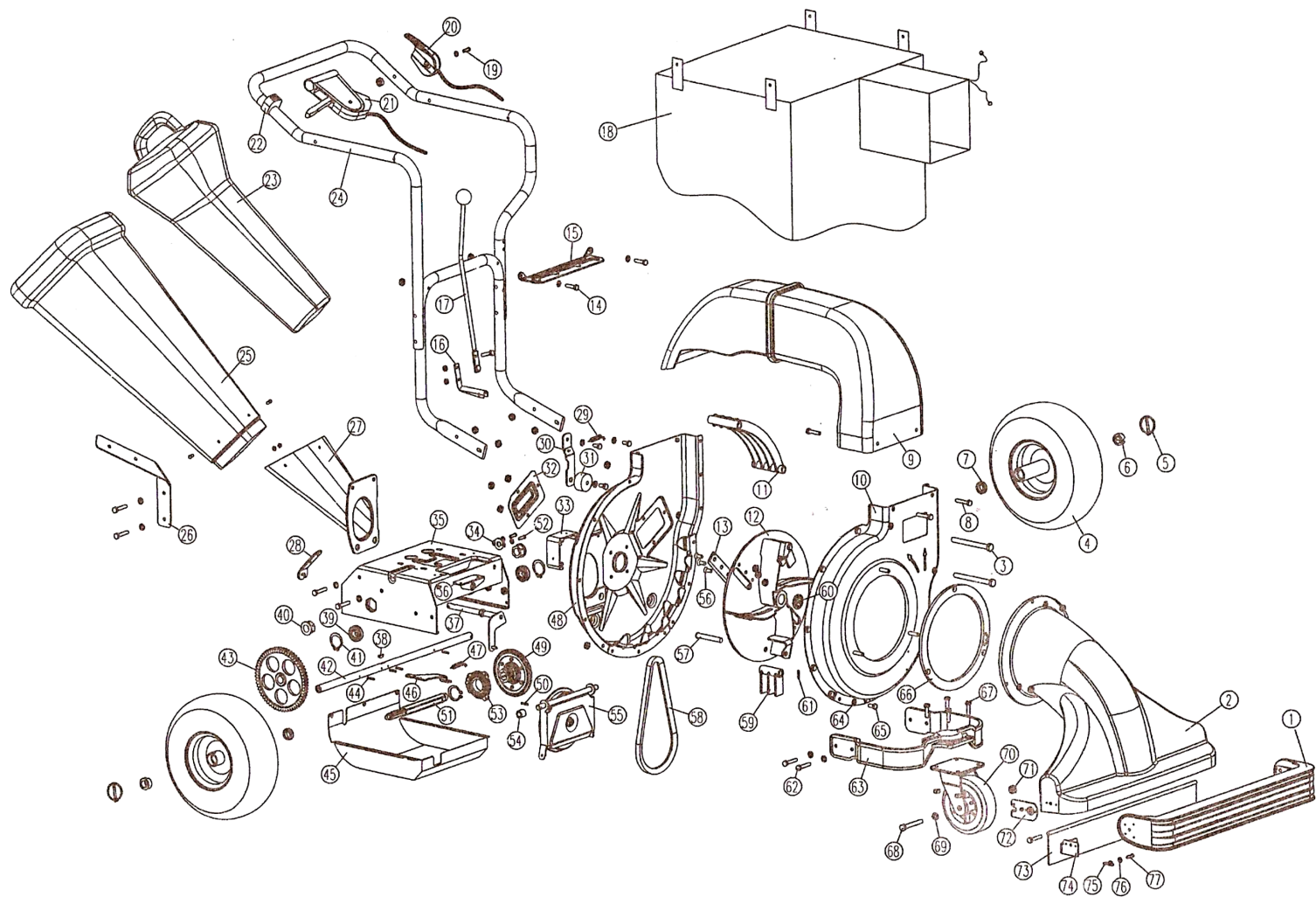


597470  
PARTS BREAKDOWN



Component	Item Description
<a href="#">597642</a>	Axes Spring Ring Suit 597470-41 Toolex Petrol Vacuum Shredder
<a href="#">597622</a>	Rear Wheel Suit 597470-4 Toolex Petrol Vacuum Shredder
<a href="#">597629</a>	Gear Board Suit 597470-15 Toolex Petrol Vacuum Shredder
<a href="#">597633</a>	Controller Suit 597470-21 Toolex Petrol Vacuum Shredder
<a href="#">597640</a>	Bearing 3202Z Suit 597470-39 Toolex Petrol Vacuum Shredder
<a href="#">597647</a>	Hammer Axes Suit 597470-57 Toolex Petrol Vacuum Shredder
<a href="#">597648</a>	V Belt To Suit 597470-58 A686 Toolex Vacuum Shredder
<a href="#">597631</a>	Collection Bag Suit 597470 Toolex Petrol Vacuum Shredder
<a href="#">597637</a>	Impeller Case Supporter Suit 597470-33 Toolex Petrol Vacuum Shredder
<a href="#">597620</a>	Lever Assembly Suit 597470-1 Toolex Petrol Vacuum Shredder
<a href="#">597621</a>	Nozzle Suit 597470-2 Toolex Petrol Vacuum Shredder
<a href="#">597623</a>	Axle Long Bush Suit 597470-6 Toolex Petrol Vacuum Shredder
<a href="#">597624</a>	Axle Short Bush Suit 597470-7 Toolex Petrol Vacuum Shredder
<a href="#">597625</a>	Discharge Tube To Suit 597470 Toolex Petrol Vacuum Shredder
<a href="#">597627</a>	Impeller Suit 597470-12 Toolex Petrol Vacuum Shredder
<a href="#">597628</a>	Blade Suit 597470-13 Toolex Petrol Vacuum Shredder
<a href="#">597634</a>	Switch Suit 597470-22 Toolex Petrol Vacuum Shredder
<a href="#">597635</a>	Handle Suit 597470-24 Toolex Petrol Vacuum Shredder
<a href="#">597639</a>	Gear Case Body Suit 597470-35 Toolex Petrol Vacuum Shredder
<a href="#">597645</a>	Spring 6 Suit 597470-47 Toolex Petrol Vacuum Shredder
<a href="#">597649</a>	Hammer Suit 597470-59 Toolex Petrol Vacuum Shredder
<a href="#">597650</a>	Flat Gasket Suit 597470-64 Toolex Petrol Vacuum Shredder
<a href="#">597651</a>	Nozzle Gasket Suit 597470-66 Toolex Petrol Vacuum Shredder
<a href="#">597652</a>	Wheel Suit 597470-70 Toolex Petrol Vacuum Shredder

<a href="#"><u>597626</u></a>	Impeller Case Front Suit 597470-10 Toolex Petrol Vacuum Shredder
<a href="#"><u>597630</u></a>	Gear Adjustment Handle Suit 597470-17 Toolex Petrol Vacuum Shredder
<a href="#"><u>597632</u></a>	Throttle Control Valve Suit 597470-20 Toolex Petrol Vacuum Shredder
<a href="#"><u>597636</u></a>	Tension Wheel Spring Suit 597470-29 Toolex Petrol Vacuum Shredder
<a href="#"><u>597638</u></a>	Impeller Bracket Suit 597470-34 Toolex Petrol Vacuum Shredder
<a href="#"><u>597641</u></a>	Gear Case Bearing Suit 597470-40 Toolex Petrol Vacuum Shredder
<a href="#"><u>597643</u></a>	Rear Wheel Axes #2 Suit 597470-42 Toolex Petrol Vacuum Shredder
<a href="#"><u>597644</u></a>	Big Gear QT600-3 Suit 597470-43 Toolex Petrol Vacuum Shredder
<a href="#"><u>597646</u></a>	V Wheel With Clutch Suit 597470-55 Toolex Petrol Vacuum Shredder
<a href="#"><u>597653</u></a>	Leaf Collect Plate Suit 597470-73 Toolex Petrol Vacuum Shredder

No	Description	Material	Spec.	QTY
1	lever			1
2	nozzle			1
3	hex bolt		M12*130	2
4	rear wheel		19"	2
5	hemicycle pin			2
6	axle long bush	F0113J		2
7	axle short bush	F0113J		2
8	hex bolt		M8*12	2
9	discharge tube			1
10	impeller case(front)	cold rolled steel Q235	t2	
11	screen			1
12	impeller	cold rolled steel Q235	t4	
13	blade	W18Cr4V		2
14	hex bolt		M8*40	few
15	gear board 2	cold rolled steel Q235	t3	1
16	connector	cold rolled steel 65Mn	t2	1
17	gear adjust handle			1
18	bag			1
19	hex bolt		M6*50	1
20	throttle control lever			1
21	manipulate controller			1
22	switch			1
23	tamper plug			1
24	handle	welded steel tubeQ235	Ø28*2	1
25	side chute 1			1
26	side chute bracket	cold rolled steel Q235	t1.5	1
27	side chute 2	cold rolled steel Q235	t1.5	1
28	seat		t4	1
29	tension wheel spring	65Mn		1
30	tension wheel support	cold rolled steel Q235	t3	1
31	tension wheel	PP		1
32	blade cover plate	cold rolled steel Q235	t1.5	1
33	impeller case supporter	ZG270-500		1
34	impeller bracket	steel 45	t3	1
35	gear case body	steel Q235		1
36	bracket	cold rolled steel Q235	t2	1
37	connect bar			1
38	hemicycle key		5*7.5*19	1
39	bearing		3202Z	2
40	gear case bearing	FZ1265	5*21	2
41	axes spring ring		35	3
42	rear wheel axes 2#			1
43	big gear	QT600-3		1
44	spring roll pin		6*12	4
45	bottom cover	Steel Q235	t2	1
46	tray spring bracket	Steel Q235	t3	1
47	spring			1

48	impeller case(rear)	cold rolled steel Q235	t2	1
49	friction wheel			1
50	spring roll pin		4*14	1
51	small gear axes	hard-drawn hex steel 45#		1
52	hex bolt		M6*10	2
53	slide bearing			1
54	position control cover	POM		1
55	V-wheel with clutch			1
56	inner hex screw	round steel 35#	M8*25	6
57	hammer axes	round steel 45#	Ø15	2
58	V-belt			1
59	hammer	ZG270-500		2
60	blade press ring	steel Q235	t3	1
61	spring roll pin		3*16	2
62	hex bolt		M8*20	4
63	front wheel bracket	ZG270-500		1
64	flat gasket		8	few
65	hex bolt		M8*12	few
66	nozzle gasket		PP	1
67	hex bolt		M8*35	4
68	hex bolt		M12*100	1
69	flat gasket		8	3
70	wheel			1
71	nut		M12	3
72	nozzle support plate	cold rolled steel Q235	t2	2
73	leaf collect plate	neoprene		1
74	nozzle support angle	cold rolled steel Q235	t2	2
75	flange nut		M6	2
76	flat gasket		6	few
77	spiral bolt		M6*25	4