

593073 20M AUTO REWIND AIR HOSE REEL

TOOLEX[®]
Industrial



READ THROUGH AND CAREFULLY UNDERSTAND
THESE INSTRUCTIONS BEFORE USING THIS TOOL

INSTRUCTION MANUAL

CONSUMER SERVICE CENTRE
PO BOX 1012
HAMILTON NSW 2303 AUSTRALIA
Made in P.R.C.

593073 AUTOMATIC HOSE REEL INSTRUCTION MANUAL

FEATURES

This Toolex Industrial Hose Reel is made of high-quality materials. It is driven and released by a coiled spring, which can rewind the hose automatically.

Developed and designed for multi-purpose use, this reel has the following features:

- Automatic locking - the hose will automatically lock every 1 metre (approx.) of extended hose.
- Self layering system - smooth coiling system.
- Reinforced PVC braided hose with 2 metre leader hose pre-fitted.
- Industrial strength high impact plastic case provides secure storage.
- Swivel mounting bracket for versatility and 180° rotation.
- Carry handle enables easy moving between selected mountings.
- Ideal for industrial and automotive sites, mobile and home workshops, plumbing and carpentry.
- Suitable for compressed air applications only.

This reel is fitted with a high quality kink resistant PVC braided hose 20m length.

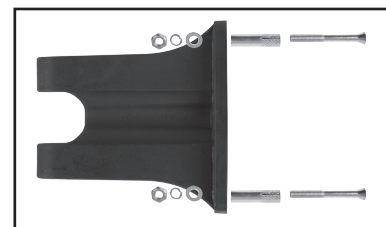
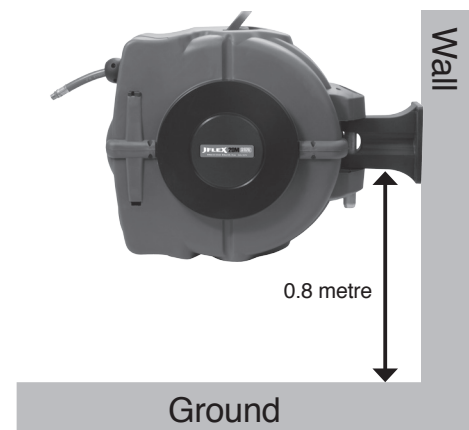
This reel is complete with 2m leader hose, mounting bracket, metal tube and 4 x M8 expansion bolts. The industrial-strength metal tube connects the reel to the mounting bracket.

This reel can be fixed on a wall or ceiling using the mounting bracket.

INSTALLATION

This Toolex Industrial Hose Reel can be mounted in a horizontal or vertical position.

1. Choose a location that is near to the air source.
2. For large areas, place the hose reel at the centre of the work area.
3. When mounting the hose reel vertically, ensure there is adequate clearance under the reel to prevent injury or damage.
4. Install the mounting bracket onto a flat surface.
Note: It is recommended to install the mounting bracket 0.8m (minimum) above the floor level.
 - a) Drill 4 x M8 holes to match the holes located in the mounting bracket.
 - b) Push the 4 x M8 expansion bolts (supplied) into the holes and secure the mounting bracket using the washers and nuts.
5. Connect the hose reel to the mounting bracket with the metal tube.
6. Connect the inlet leader hose to the air source.
Apply thread sealing tape to all air line and air fittings.



OPERATION

1. Slowly pull out the hose to the required length.
A 'clicking' noise will be heard every revolution of the inner drum.
To lock the reel, allow the hose to retract slowly after hearing the second or third 'click'.
2. To release the hose, pull out the hose until the 'clicking' noise stops,
and then allow the hose to slowly retract.

WARNING

To avoid injury and damage, always hold the hose while it is retracting.

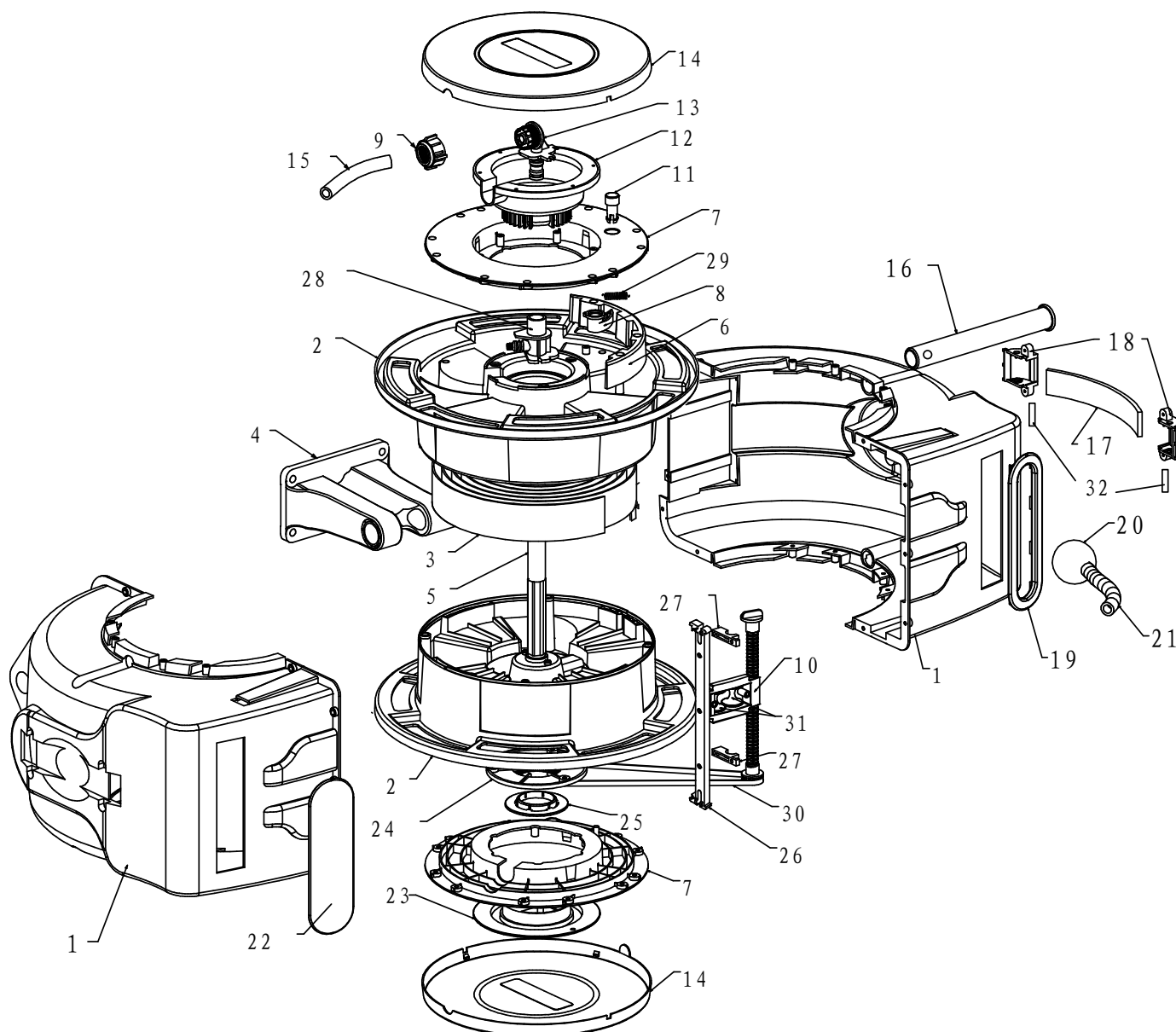
MAINTENANCE

- Always keep the hose clean. If the hose becomes dirty, clean it with a damp cloth while retracting.
- Mount the hose reel in a sheltered area to assist and protect the performance of the hose and reel.
- **DO NOT** allow the hose to contact any corrosive chemicals or fluids.
- Always retract the hose when not in use.
- This JFlex Hose Reel contains a pre-tensioned spring inside the drum assembly.
- **DO NOT** attempt to open the drum assembly.
- If the hose jams, pull the hose fully out and retry. Repeat procedure if required.
- Always guide hose back into the reel and ensure the hose is clean and not twisted.

SPECIFICATIONS

Part No.	Hose Length	Hose Material	Working Pressure	Hose I.D.	Hose O.D.	Leader Hose Length	Size of Inlet
593073	20m	PVC	Max. 250P.S.I. (17Mpa)	9.5mm	16mm	2m	1/4" BSP

PARTS BREAKDOWN



593073 SPARE PARTS LIST	
Part No.	Part Name
1	outer casing
2	coil wheel
3	spring
4	mounting bracket
5	center shaft
6	ratchet
7	right-and-left cover
8	pallet
9	hose fixing nut
10	self-layering mechanism

11	pallet block post
12	hose turntable
13	hose inlet
14	cover
15	supply to hose
16	aluminum tube
17	handle
18	handle base
19	window
20	hose stop
21	deferent hose
22	closed window

23	spring fix cover
24	toothed drive plate
25	toothed drive plate cover
26	guide body
27	screw consolidated
28	inlet connector
29	metal post
30	pulling spring
31	in-phase rack
32	rotating gear