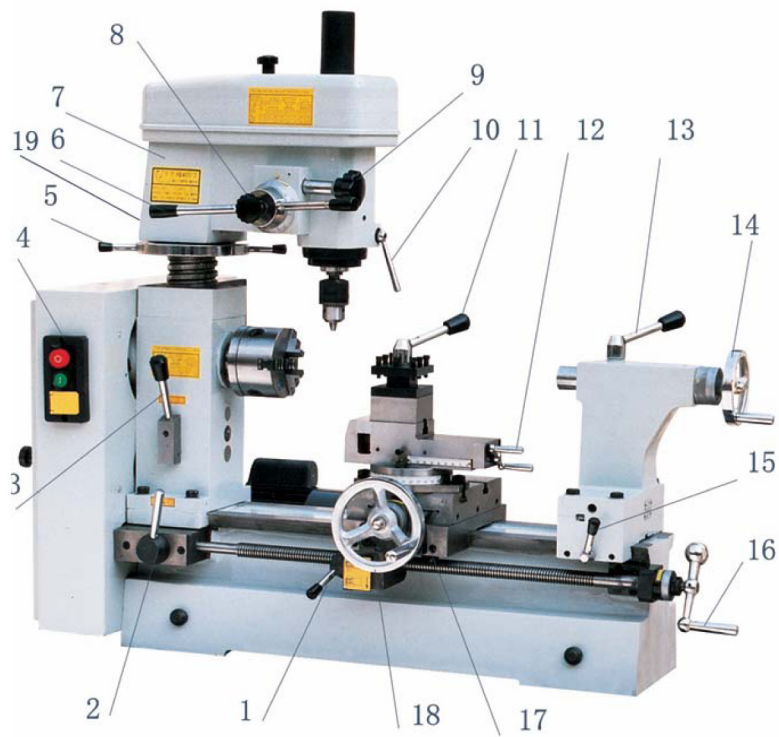


580508

PARTS BREAKDOWN



| Component | Item Description |
|------------------------|---------------------------------------|
| 523761 | M/Purpose Mach Gear 85A 580508 |
| 533998 | M/Purpose Mach Handwheel 580508 |
| 533999 | M/Purpose Mach Knob 580508 |
| 535076 | M/Purpose Mach Cover 580508 |
| 536460 | M/Purpose Mach Handle 580508 |
| 533752 | M/Purpose Mach Gib 580508 |
| 533753 | M/Purpose Mach Lead Screw 580508 |
| 533756 | M/Purpose Mach Driving ShAft 580508 |
| 533758 | M/Purpose Mach Cone Pulley 580508 |
| 533759 | M/Purpose Mach Pulley Dr ShAft 580508 |
| 533761 | M/Purpose Mach Pulley 580508 |
| 533763 | M/Purpose Mach Washer 30 580508 |
| 533764 | M/Purpose Mach Rotation ShAft 580508 |
| 533765 | M/Purpose Mach ShAft D 580508 |
| 533766 | M/Purpose Mach Clutch A 580508 |
| 533767 | M/Purpose Mach M/Purpose Vice 580508 |
| 533768 | M/Purpose Mach Face Cutter 580508 |
| 533769 | M/Purpose Mach Clutch B 580508 |
| 533770 | M/Purpose Mach Gear A 580508 |
| 533771 | M/Purpose Mach ShAft 580508 |
| 533772 | M/Purpose Mach Lever 580508 |
| 533773 | M/Purpose Mach Knob M10 580508 |
| 533774 | M/Purpose Mach Motor 580508 |

| | |
|-------------------------------|---|
| <u>533775</u> | M/Purpose Mach Clutch B 580508 |
| <u>533776</u> | M/Purpose Mach Clutch A 580508 |
| <u>533777</u> | M/Purpose Mach Capacitor 400V 580508 |
| <u>533778</u> | M/Purpose Mach Capacitor 220V 580508 |
| <u>534794</u> | M/Purpose Mach Clamp Lever 580508 |
| <u>534796</u> | M/Purpose Mach Drill ShAft 580508 |
| <u>534797</u> | M/Purpose Mach Bearing Pedistl 580508 |
| <u>534799</u> | M/Purpose Mach Cross Lead Brkt 580508 |
| <u>535847</u> | M/Purpose Mach Half Nut 580508 |
| <u>595693</u> | Metal Lathe Multipurpose Machine Replacment Key for 3 Jaw Chuck Suit 580508 |
| <u>533755</u> | M/Purpose Mach Knob (B) 580508-96 |
| <u>533757</u> | M/Purpose Mach V Belts O-710 O-630 580508 |
| <u>533760</u> | M/Purpose Mach Round Nut M20 580508-78 |
| <u>533762</u> | M/Purpose Mach Round Nut M30 580508-133 |
| <u>534795</u> | M/Purpose Mach Microfeed Handl 580508-109 |
| <u>533754</u> | M/Purpose Mach Lead Screw Nut 580508-422A |
| <u>534798</u> | M/Purpose Mach Cross Lead Screw And Nut 580508 |
| <u>598541</u> | M/Purpose Machine Bolt Suit 580508 |
| <u>536153</u> | M/Purpose Mach Power Switch 580508-323 Magnetic Switch |
| <u>524657</u> | M/Purpose Machine Nut 580508-451 Toolpost Slide In Plastic Bag |

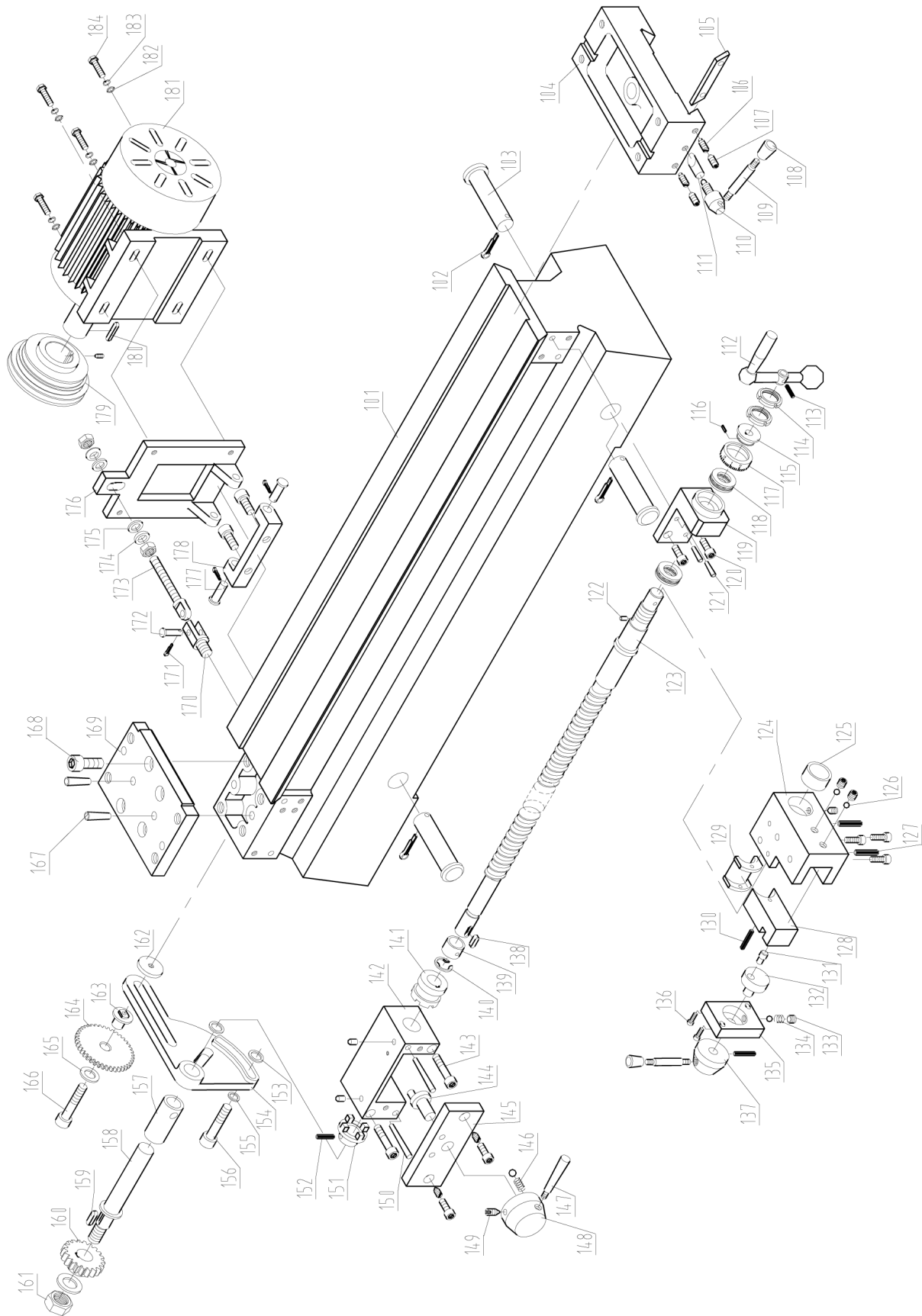
STANDARD ACCESSORIES

| Serial No. | Specification | | Quantity | Remark |
|------------|------------------------------------|---------------|----------|---|
| 1 | Tree-jaw chuck | 100mm | 1 | |
| 2 | Centers | M.T.3 | 2 | |
| 3 | Drill chuck | B16(1.5~13mm) | 1 | |
| 4 | Tie rod | | 1 | |
| 5 | Tie rod washer | | 1 | |
| 6 | Drill stock | | 1 | |
| 7 | Toolpost wrench | | 1 | |
| 8 | Open end wrench | 13mm-16mm | 1 | |
| 9 | Wedge | | 1 | |
| 10 | Allen wrench | 4mm | 1 | |
| 11 | Change gear | 5mm | 1 | |
| | | 6mm | 1 | |
| | | 8mm | 1 | ForHQ400/3A |
| | | 24T | 1 | For metric and imperial leadscrew |
| | | 27T | 1 | |
| | | 30T | 1 | |
| | | 33T | 1 | |
| | | 36T | 1 | |
| | | 42T | 1 | |
| | | 48T | 1 | |
| | | 60T | 1 | |
| | | 120T | 1 | |
| | | 39T | 1 | For imperial Leadscrew |
| | | 72T | 1 | |
| | | 25T | 1 | For metric leadscrew |
| | | 75T | 1 | |
| 12 | Duplex gear | 60T/120T | 1 | For metric |
| | | 125T/127T | 1 | Leadscrew |
| | | 60T/127T | 1 | For imperial |
| | | 120T/127T | 1 | Leadscrew |
| 1 | Lathe tool | | | 1 set |
| 2 | Multi-purpose machine vice | | | 1 set |
| 3 | Milling force cutting cutter chuck | | | 1 set |
| 4 | Reversible thread tapping tools | | | 1 set |

580508
PARTS BREAKDOWN



Bed Assembly |01|

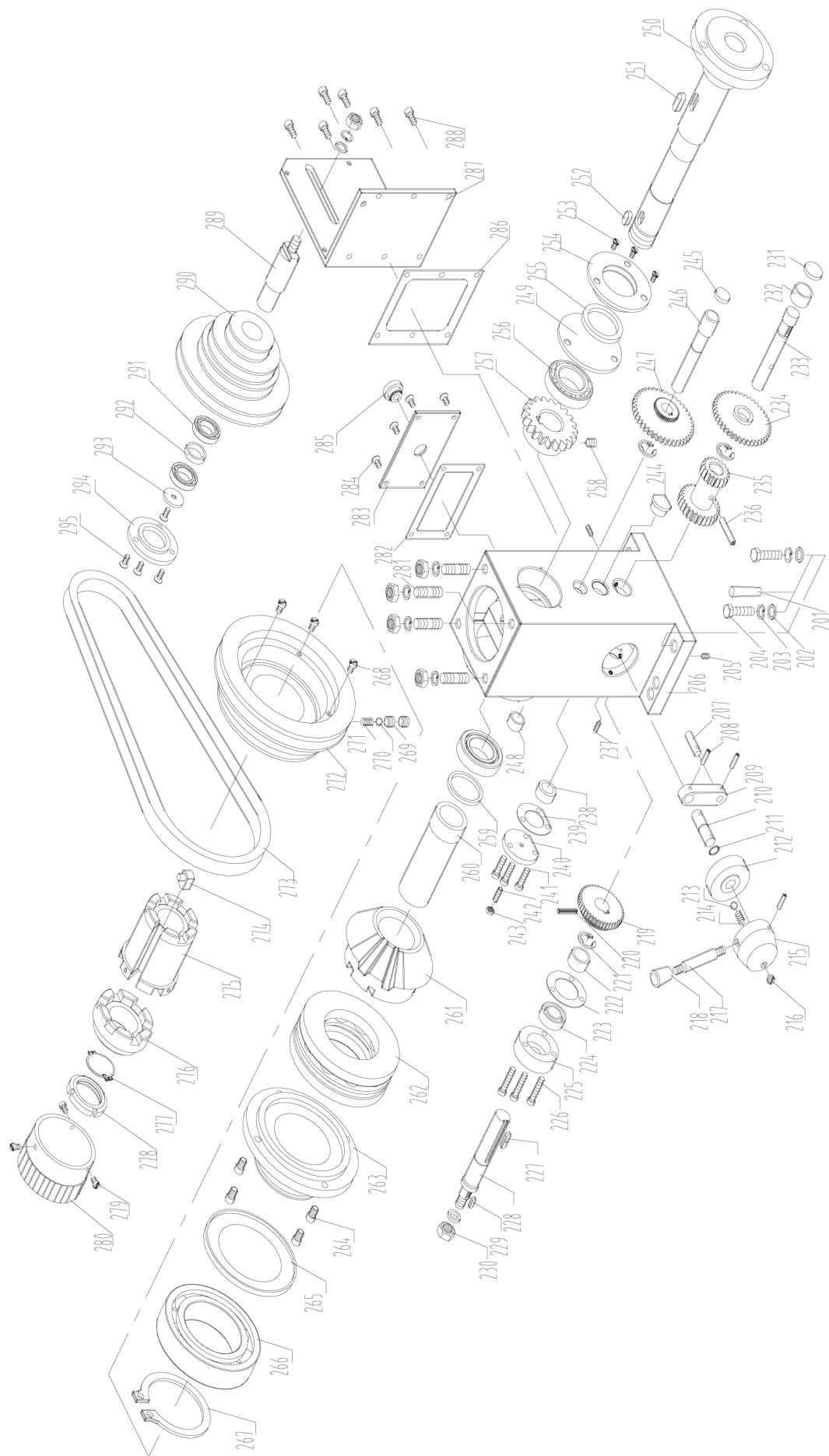


BED ASSEMBLY

| Index no. | Part no. | Description | Size | Qty. |
|-----------|-----------------|-------------------------|---------|------|
| 101 | HQ400-11-001(1) | Bed | | 1 |
| 102 | GB/T91-1986 | Split pin | 5×35 | 3 |
| 103 | HQ400-11-013 | Lifting pin | | 3 |
| 104 | HQ400-11-004 | Tail stock base | | 1 |
| 105 | HQ400-11-016 | Gib | | 1 |
| 106 | GB/T79-1985 | Screw | M8×15 | 2 |
| 107 | GB/T77-1985 | Screw | M8×25 | 2 |
| 108 | JB/T7271.3-1994 | Knob | M6×20 | 2 |
| 109 | JB/T7271.6-1994 | Lever | M6×50 | 2 |
| 110 | HQ400-11-022 | Locking screw | | 1 |
| 111 | HQ400-11-015 | Locking pin | | 1 |
| 112 | JB/T7270.9-1994 | Ball-crank handle | 12×50 | 1 |
| 113 | GB/T879-1986 | Spring pin | 4×24 | 1 |
| 114 | GB/T812-1988 | Round nut | M14×1.5 | 2 |
| 115 | HQ400-11-006B | Sale ring base | | 1 |
| 116 | HQ400-11-006C | Spring piece | | 1 |
| 117 | HQ400-11-006 | Scale ring | | 1 |
| 118 | GB/T301-1995 | Bearing51103 | | 2 |
| 119 | HQ400-11-010 | Lead screw bracket | | 1 |
| 120 | GB/T70-1985 | Screw | M6×12 | 7 |
| 121 | GB/T879-1986 | Spring pin | 5×20 | 2 |
| 122 | GB/T119-1986 | Pin | B4×6 | 1 |
| 123 | HQ400/3-01-006 | Longitudinal lead screw | | 1 |
| 124 | HQ400/3-06-007 | Half-nut base | | 1 |
| 125 | HQ400/3-06-001 | Lead screw sleeve | | 1 |
| 126 | GB/T308-1977 | Steel ball | 36.5 | 4 |
| 127 | GB/T879-1986 | Spring pin | 5×20 | 2 |
| 128 | HQ400/3-06-008 | Half-nut bracket | | 1 |
| 129 | HQ400/3-06-002 | Half-nut | | 1 |
| 130 | GB/T879-1986 | Spring pin | 4×30 | 2 |
| 131 | HQ400/3-06-003 | Pin | | 1 |
| 132 | HQ400/3-06-004 | Eccentric arm | | 1 |
| 133 | GB/T77-1985 | Screw | M8×6 | 1 |
| 134 | CM1224C-06-007 | Spring | 36 | 1 |
| 135 | HQ400/3-06-005 | Cover | | 1 |
| 136 | GB/T70-1985 | Screw | M5*12 | 2 |
| 137 | HQ400/3-06-006 | Lever base | | 1 |
| 138 | GB/T1096-1979 | Key | A5×12 | 1 |
| 139 | HQ400/3-04-007 | Sleeve right) | | 1 |
| 140 | GB/T896-1986 | “E”ring | | 1 |
| 141 | HQ400/3-04-004 | Clutch B | | 1 |
| 142 | HQ400/3-04-006 | Link base | | 1 |

| | | | | |
|-----|------------------|------------------|--------|---|
| 143 | GB/T70-1985 | Screw | M6×50 | 1 |
| 144 | HQ400/3-04-005 | Eccentric pin | | 1 |
| 145 | HQ400/3-04-008 | Cover | | 1 |
| 146 | GB/T2089-1980 | Spring | 1×6×15 | 1 |
| 147 | JB/T7270.3-1994 | Handle | BM8×80 | 1 |
| 148 | HQ400/3-04-009 | Lever base | | 1 |
| 149 | GB/T78-1985 | Screw | M6×16 | 1 |
| 150 | GB/T117-1986 | Tap pin | B5×20 | 2 |
| 151 | HQ400-04-003 | Clutch A | | 1 |
| 152 | GB/T879-1986 | Spring pin | 5×22 | 1 |
| 153 | HQ400/3-01-012 | Adjusting washer | | 1 |
| 154 | HQ400/3-01-008 | Gear bracket | | 1 |
| 155 | GB/T97.1-1985 | Washer | 6 | 1 |
| 156 | GB/T70-1985 | Screw | M6×30 | 1 |
| 157 | HQ400/3-04-002 | Sleeve (left) | | 1 |
| 158 | HQ400/3-04-001 | Shaft | | 1 |
| 159 | GB/T1096-1979 | Key | 4×12 | 1 |
| 160 | HQ400/3-附 01-012 | Change gear | | 1 |
| 161 | GB/T6170-1986 | Nut | M10 | 3 |
| 162 | HQ400/3-01-009 | “T”key | | 1 |
| 163 | HQ400/3-01-010 | “T”coller | | 1 |
| 164 | HQ400/3-附 01-013 | Change gear | M=1 | |
| 165 | GB5287-85 | Washer 6 | | 2 |
| 166 | GB/T70-1985 | Screw | M6×35 | 2 |
| 167 | GB/T117-1986 | Pin | 8×40 | 2 |
| 168 | GB/T70-1985 | Screw | M10×25 | 4 |
| 169 | HQ400-11-001(2) | Fixing block | | 1 |
| 170 | HQ400-11-029 | Movable joint | | 1 |
| 171 | GB/T91-1986 | Split pin | 3*20 | 1 |
| 172 | GB882-86 | Shaft | B8×24 | 1 |
| 173 | HQ400-11-030 | Bolt | | 1 |
| 174 | GB/T850-1988 | Cone face washer | 10 | 2 |
| 175 | GB/T849-1988 | Ball face washer | 10 | 2 |
| 176 | HQ400-11-024 | Motor base | | 1 |
| 177 | GB882-86 | Shaft | B10×40 | 2 |
| 178 | HQ400-11-025 | Motor pedestal | | 1 |
| 179 | HQ400/3-03-012 | Motor pulley | | 1 |
| 180 | GB/T1096-1979 | Key | 6×25 | |
| 181 | | Motor | 0.55KW | 1 |
| 182 | GB/T97-1976 | Washer | 38 | 4 |
| 183 | GB/T93-1976 | Washer | 38 | 4 |
| 184 | GB/T5780-1986 | Bolt | M8×25 | 4 |

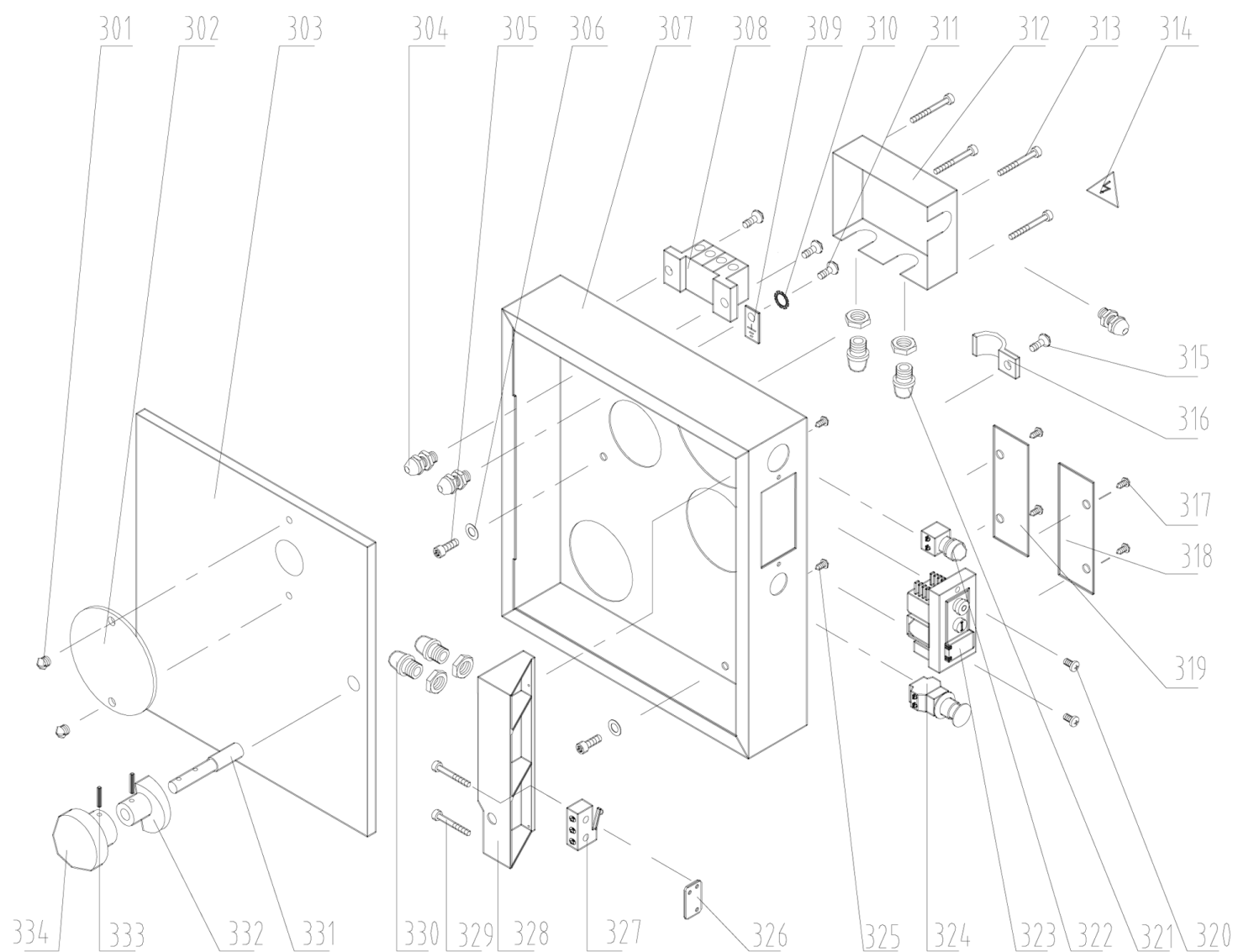
580508
PARTS BREAKDOWN



| Index No. | Part No. | Description | Size | Qty. |
|-----------|-----------------|--------------------|------------|------|
| 201 | GB117-86 | Pin | 8×40 | 2 |
| 202 | GB/T848-85 | Washer | 10 | 6 |
| 203 | GB/T93-87 | Spring washer | 10 | 6 |
| 204 | GB/T5780-86 | Hexagon Head Screw | M10×40 | 4 |
| 205 | GB/T71-85 | Screw | M5×8 | 1 |
| 206 | HQ400/3-02-007N | Headstock | | 1 |
| 207 | GB/T119-86 | Pin | B8×28 | 1 |
| 208 | GB/T879-86 | Spring Pin | 4×18 | 2 |
| 209 | HQ400/3-02-018 | Link Board | | 1 |
| 210 | HQ400/3-02-041 | Shaft | | 1 |
| 211 | GB/T3452.1-82 | O- Ring | 8.5×1.5 | 1 |
| 212 | HQ400/3-02-020 | Spacer | | 1 |
| 213 | GB/T308-77 | Steel Ball | Ø6.5 | 1 |
| 214 | GB/T2089-86 | Spring | 0.8×5×17 | 1 |
| 215 | HQ400/3-02-022 | Lever Base | | 1 |
| 216 | GB/T73-85 | Screw | M8×5 | 1 |
| 217 | CM1224C-04-003 | Lever | | 1 |
| 218 | GB/T7271.3-94 | Knob | BM10×50 | 1 |
| 219 | HQ400/3-02-006 | Gear | | 1 |
| 220 | GB/T879-86 | Spring Pin | 3×10 | 1 |
| 221 | GB/T896-86 | “E”-ring | 12 | 3 |
| 222 | HQ400/3-02-008 | Sleeve | | 1 |
| 223 | HQ400/3-02-005 | Paper Washer | | 1 |
| 224 | HG4-692-67 | Oil Seal | PD14×30×10 | 1 |
| 225 | HQ400/3-02-002 | Oil Seal Board | | 1 |
| 226 | GB/T65-85 | Screw | M5×20 | 3 |
| 227 | HQ400/3-02-040 | Key | 5×30 | 1 |
| 228 | HQ400/3-02-009 | Shaft D | | 1 |
| 229 | GB/T1096-79 | Key | 4×10 | 1 |
| 230 | GB/T6170-86 | Nut | M10 | 2 |
| 231 | HQ500-02-020 | Cover | | 1 |
| 232 | HQ400/3-02-024 | Sleeve | | 1 |
| 233 | HQ400/3-02-010 | Shaft C | | 1 |
| 234 | HQ400/3-02-012 | Gear | | 1 |
| 235 | HQ400/3-02-011 | Gear | | 1 |
| 236 | GB/T879-86 | Spring Pin | 5×20 | 1 |
| 237 | GB/T78-85 | Screw | M5×12 | 2 |
| 238 | HQ400/3-02-038 | Sleeve | | 1 |
| 239 | HQ400/3-02-026 | Paper Washer | | 1 |
| 240 | HQ500-02-022 | Cover | | 1 |
| 241 | GB/T65-85 | Screw | M5×12 | 3 |
| 244 | GB/T1160.2A | Oil Window | 10×M16×1.5 | 1 |
| 245 | HQ500-01-019 | Cover | | 1 |
| 246 | HQ400/3-02-015 | Shaft B | | 1 |
| 247 | HQ400/3-02-013 | Gear | | 1 |
| 248 | HQ400/3-02-030 | Sleeve | | 1 |
| 249 | HQ400/3-02-028 | washer | | 1 |
| 250 | HQ400/3-02-027 | Spindle | | 1 |

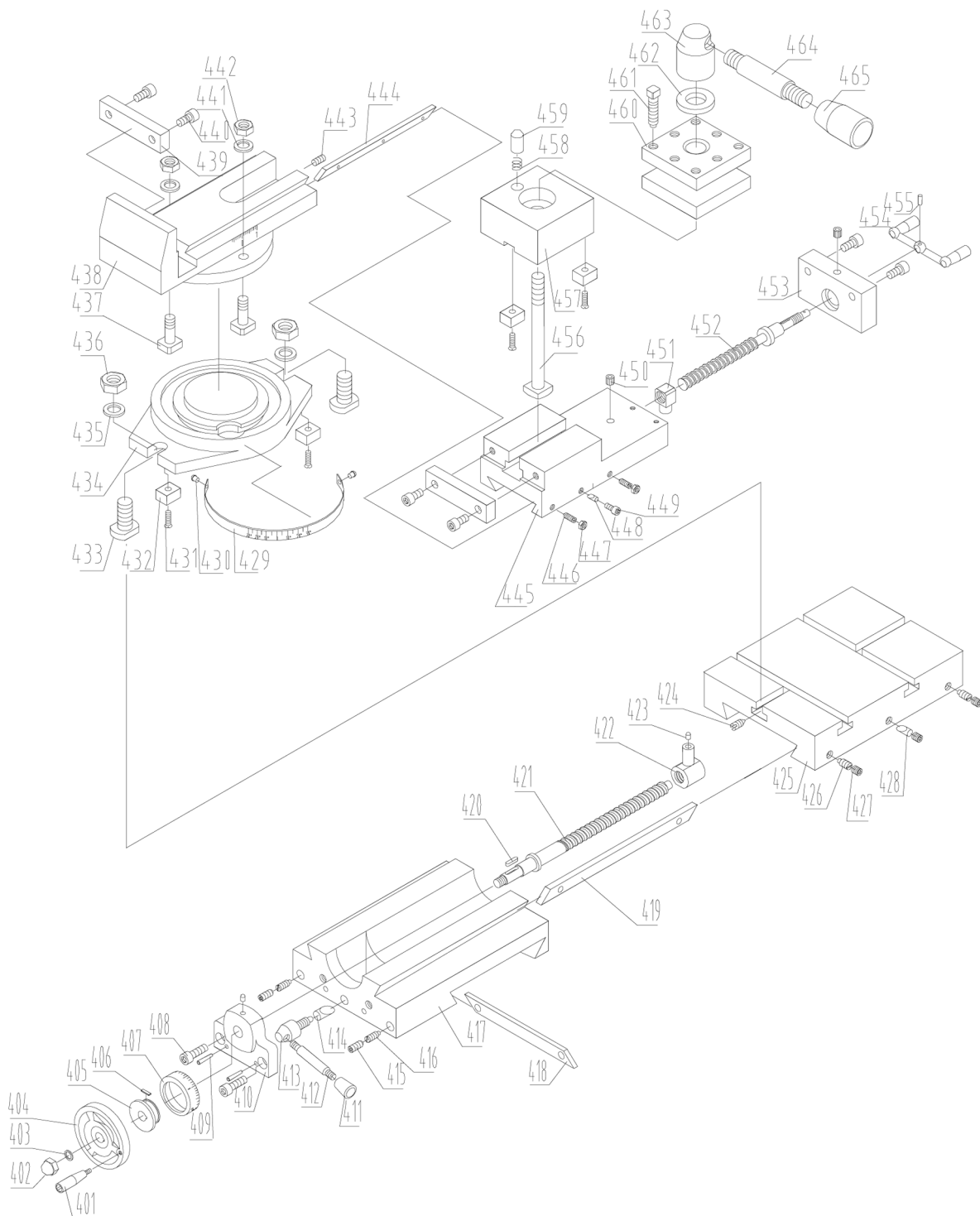
| | | | | |
|-----|----------------|-------------------------|----------|---|
| 251 | GB/T1096-79 | Key | 8×22 | 1 |
| 252 | GB/T1096-79 | Key | 8×12 | 1 |
| 253 | GB/T68-85 | Screw | M4×10 | 3 |
| 254 | HQ400-12-003 | Spindle Gland | | 1 |
| 255 | HQ400-12-019 | Oil Seal Of Spindle | | 1 |
| 256 | GB/T297-94 | Roller Bearing | 32007/P5 | 2 |
| 257 | HQ400/3-02-016 | Gear A | | 1 |
| 258 | GB/T78-85 | Screw | M6×10 | 1 |
| 259 | HQ400-12-013 | Compensating Collar | | 1 |
| 260 | HQ400-12-005 | Bush | | 1 |
| 261 | HQ400-12-004 | Bevel Gear | | 1 |
| 262 | GB/T301-95 | Bearing | 51113 | 1 |
| 263 | HQ400-12-009 | Bearing Seat | | 1 |
| 264 | GB/T70-85 | Socket Cap Screw | M5×10 | 4 |
| 265 | HQ400-12-014 | Bearing Cover | | 1 |
| 266 | GB/T276-94 | Single-Row Ball Bearing | 6013 | 1 |
| 267 | GB/T894.1-86 | Retain ring For Shaft | 65 | 1 |
| 268 | GB/T67-85 | Button Head Screw | M6×8 | 3 |
| 269 | GB/T73-85 | Screw | M6×6 | 6 |
| 270 | GB/T308-89 | Steel Ball | Φ5 | 3 |
| 271 | GB/T2089-86 | Compression Spring | 5×0.5×20 | 3 |
| 272 | HQ400/3-02-025 | Cone Pulley | | 1 |
| 273 | GB/T1171-2006 | V-Belt | Z-630 | 1 |
| 274 | HQ400-12-008 | T-Key | | 1 |
| 275 | HQ400-12-006 | Claw Clutch(A) | | 1 |
| 276 | HQ400-12-007 | Claw Clutch(B) | | 1 |
| 277 | GB/T858-88 | Stop Washer | 30 | 1 |
| 278 | GB/T812-88 | Bearing Locking Nut | M30×1.5 | 1 |
| 279 | GB/T65-85 | Screw | M5×8 | 3 |
| 280 | HQ400-12-012 | Hand wheel | | 1 |
| 281 | GB/T898-88 | Double Bolt | M10×35 | 4 |
| 282 | HQ400/3-02-017 | Seal | | 1 |
| 283 | HQ400-12-011 | Cover Plate | | 1 |
| 284 | GB/T70-85 | Sunk Screw | M5×8 | 4 |
| 285 | CM1224C-03-034 | Oil Cover | | 1 |
| 286 | HQ400/3-02-032 | Paper Washer | | 1 |
| 287 | HQ400/3-02-023 | Pulley Bracket | | 1 |
| 288 | GB/T70-85 | Socket Cap Screw | M6×14 | 8 |
| 289 | HQ400/3-02-033 | Shaft | | 1 |
| 290 | HQ400/3-02-034 | Pulley | | 1 |
| 291 | GB/T276-94 | Single-Row Ball Bearing | 6004 | 2 |
| 292 | HQ400/3-02-035 | Collar | | 1 |
| 293 | HQ400/3-02-036 | Washer | | 1 |
| 294 | HQ400/3-02-037 | Cover | | 1 |
| 295 | GB/T68-85 | Screw | M5×10 | 4 |

580508
PARTS BREAKDOWN



| Index No. | Part No. | Description | Size | Qty. |
|-----------|-------------------|-----------------------|----------|------|
| 301 | GB/T818-2000 | Screw | M5×6 | 2 |
| 302 | HQ400/3-03-001 | Protector Cover | | 1 |
| 303 | HQ400/3-03-016 | Protector Door | | 1 |
| 304 | | Pipe Fitting | Ø8 | 2 |
| 305 | GB/T65-85 | Screw | M6×10 | 4 |
| 306 | GB/T97.1-85 | Washer | 6 | 4 |
| 307 | HQ400/3-03-015(3) | Protector | | 1 |
| 308 | | Junction base | | 1 |
| 309 | CM1224C-09-005 | Ground Attribute | | 1 |
| 310 | GB/T862.1-87 | Washer | 5 | 1 |
| 311 | GB/T818-85 | Screw | M5×12 | 3 |
| 312 | HQ400/3A-03-035 | Shield | | 1 |
| 313 | GB/T818-85 | Screw | M4×40 | 4 |
| 314 | HQ400-00-008(3) | Warning Attribute | | 1 |
| 315 | GB/T818-85 | Screw | M4×10 | 1 |
| 316 | CZ1237G-08-009 | Cable Clamp | | 1 |
| 317 | GB/T818-2000 | Screw | M4×6 | 4 |
| 318 | HQ400/3A-03-030 | Cover (Left) | | 1 |
| 319 | HQ400/3A-03-030A | Cover (Right) | | 1 |
| 320 | GB/T818-85 | Screw | M5×12 | 2 |
| 321 | | Pipe Fitting | Ø10 | 2 |
| 322 | | Indicator Lamp | AD11 | 1 |
| 323 | | Magnetic Switch | KJD12 | 1 |
| 324 | | Push Button | LAY3 | 1 |
| 325 | GB/T5282-85 | Screw | ST4.2×15 | 2 |
| 326 | HQ400/3A-03-021 | Fixed Block | | 1 |
| 327 | | Travel Switch | LX5-11N | 1 |
| 328 | HQ400/3A-03-025 | Protective Cover | | 1 |
| 329 | GB/T818-85 | Screw | M4×35 | 2 |
| 330 | | Softwood Pipe Fitting | D97-4-20 | 2 |
| 331 | HQ400/3-03-022 | Shaft | | 1 |
| 332 | CZ1237G-08-014 | Locking Piece | | 1 |
| 333 | GB/T879-86 | Spring Pin | 3×12 | 2 |
| 334 | JB/T7271.4-94 | Handle | A8×32 | 1 |

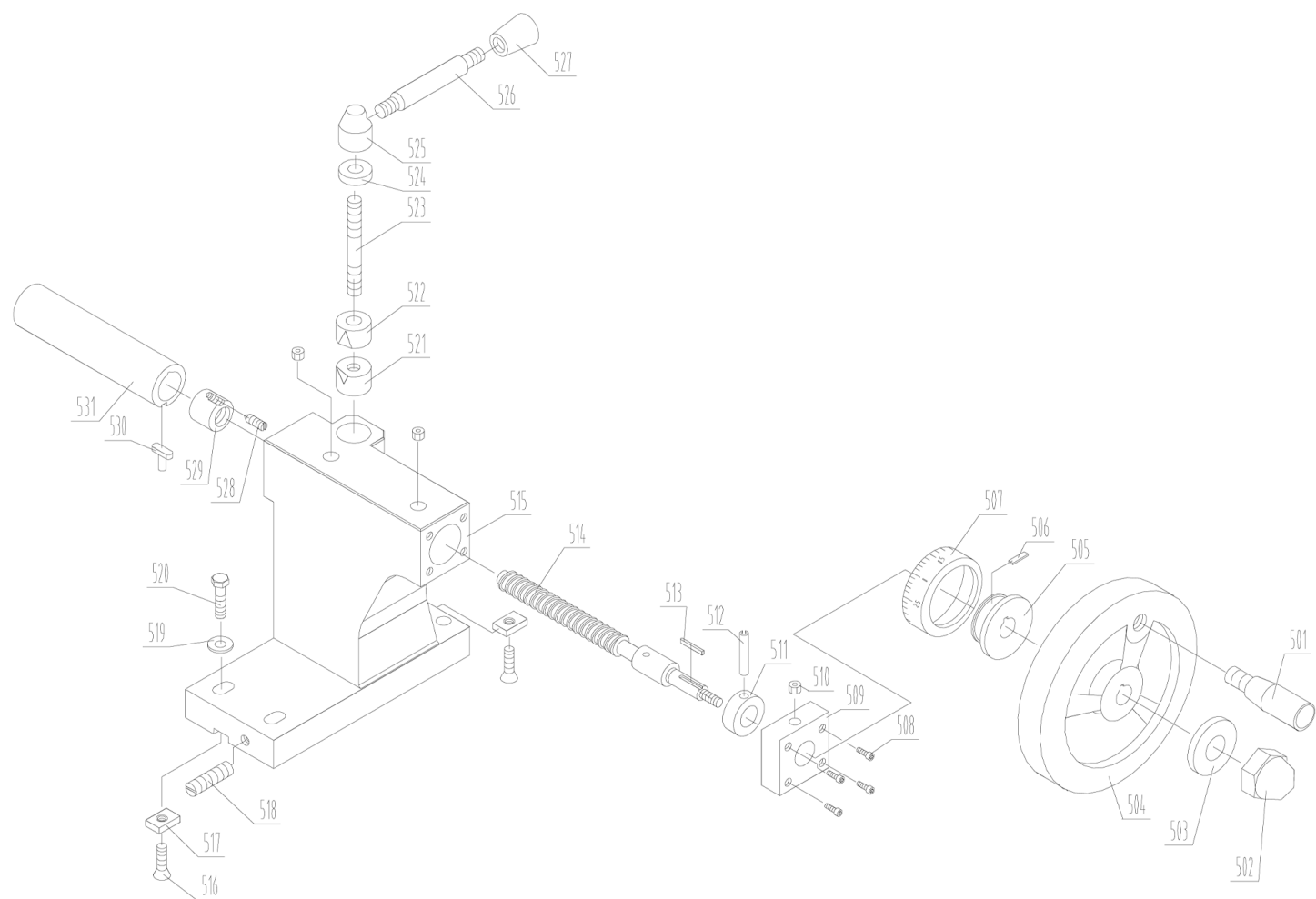
580508
PARTS BREAKDOWN



| Index no. | Part no. | Description | Size | Qty. |
|-----------|-------------------|--------------------|---------|------|
| 401 | JB/T7270.1-1994 | Handle | M8×65 | 1 |
| 402 | GB/T923-1988 | Acorn nut | M10 | 1 |
| 403 | GB/T97.1-1985 | Washer | 10 | 2 |
| 404 | JB/T7273.3-1994 | Handwheel | B12×125 | 1 |
| 405 | HQ500-10-019 | Scale ring base | | 1 |
| 406 | HQ500-10-016 | Spring piece | | 1 |
| 407 | HQ400-13-010 | Scale ring | | 1 |
| 408 | GB/T70-1985 | Screw | M8×16 | 2 |
| 409 | GB/T117-1986 | Pin | B5×25 | 2 |
| 410 | HQ400-11-021 | Leadscrew bracket | | 1 |
| 411 | JB/T7273.3-1994 | Knob | M6×20 | 1 |
| 412 | JB/T7273.3-1994 | Lever | M6×50 | 1 |
| 413 | HQ400-11-022 | Lock screw | | 1 |
| 414 | HQ400-11-014 | Lock block | | 1 |
| 415 | GB/T77-1985 | Screw | M8×12 | 5 |
| 416 | GB/T75-1985 | Screw | M8×10 | 2 |
| 417 | HQ400/3-01-002 | Longitudinal slide | | 1 |
| 418 | HQ400-11-017 | Gib | | 1 |
| 419 | HQ400-11-018 | Gib | | 1 |
| 420 | GB/T1096-1979 | Key | 4×20 | 1 |
| 421 | HQ400-11-020 | Cross lead screw | | 1 |
| 422 | HQ400-11-019 | Cross lead screw | | 1 |
| 423 | JB/T7940.4-1995 | Oiler | 6 | 2 |
| 424 | GB/T71-1985 | Screw | M6×8 | 1 |
| 425 | HQ400-11-003 | Cross slide | | 1 |
| 426 | GB/T75-1985 | Screw | M8×15 | 2 |
| 427 | GB/T77-1985 | Screw | M8×12 | 3 |
| 428 | HQ400-11-014 | Lock block | | 1 |
| 429 | HQ400-14T02-002(1 | Angle ruler | | 1 |
| 430 | GB/T827-1985 | Rivet | 2.5×5 | 2 |
| 431 | GB/T68-1985 | Screw | M4×12 | 2 |
| 432 | HQ400-14T02-010 | Key | | 2 |
| 433 | HQ400-14T02-001 | “T”-Bolt | | |
| 434 | HQ400-14T02-002 | Base | | 1 |
| 435 | GB/T97.1-1985 | Washer | 10 | 2 |
| 436 | GB/T6170-2000 | Nut | M10 | 2 |
| 437 | GB/T37-88 | Bolt | | 2 |
| 438 | HQ400-14T02-005 | Vice base | | 1 |
| 439 | HQ400-14T02-006 | Vice block | | 1 |
| 440 | GB/T70.1-2000 | Screw | M6×12 | 2 |
| 441 | GB/T97.1-1985 | Washer | 8 | 2 |
| 442 | GB/T6170-2000 | Nut | M8 | 2 |

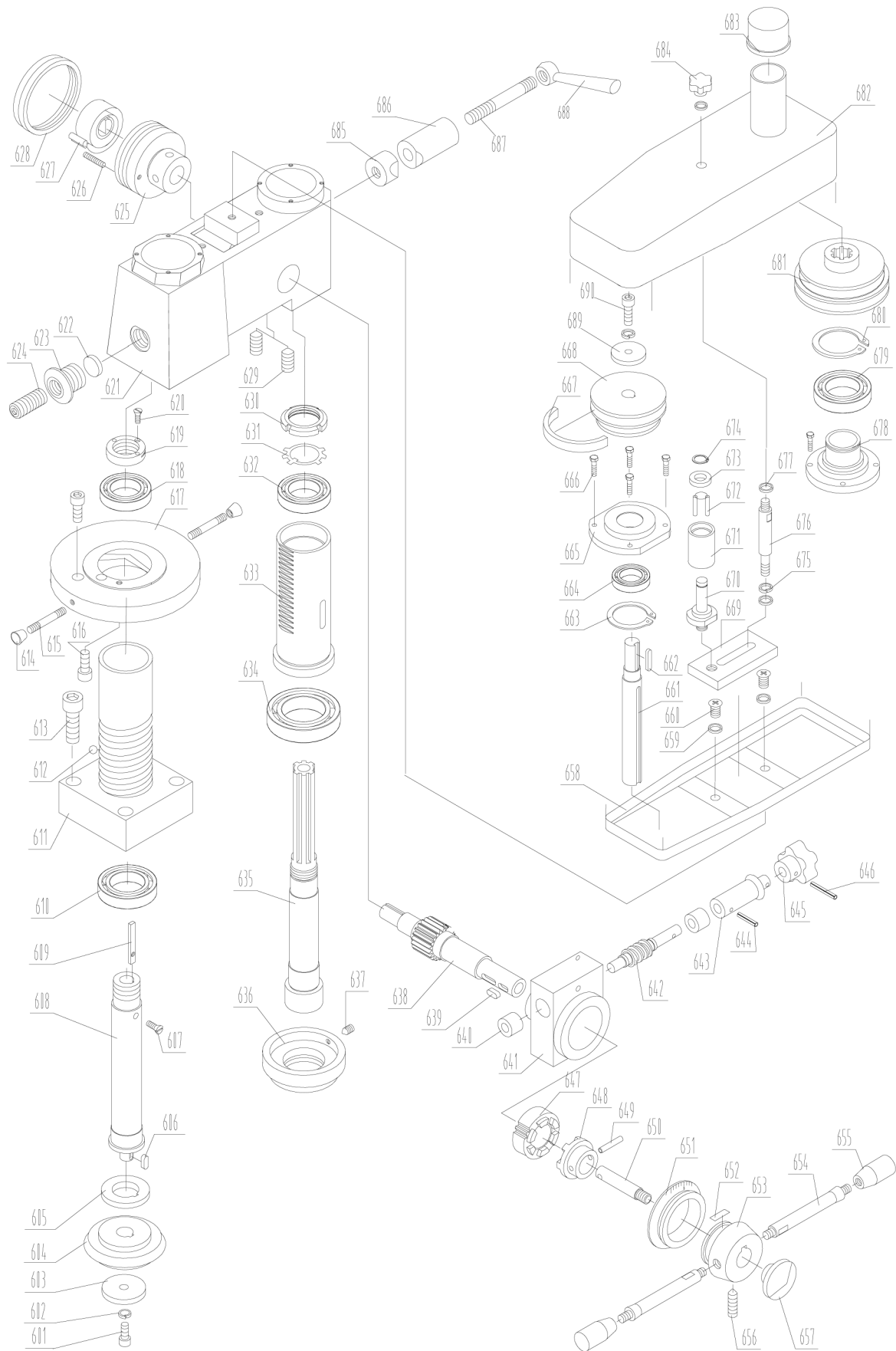
| | | | | |
|-----|------------------|---------------------|----------|---|
| 443 | GB/T78-2000 | Screw | M5×8 | 1 |
| 444 | HQ400-14T02-014 | Gib | | 1 |
| 445 | HQ400-14T02-004 | Moving vice | | 1 |
| 446 | GB/T78-1985 | Screw | M5×14 | 2 |
| 447 | GB/T6170-2000 | Nut | M5 | 2 |
| 448 | HQ400-14T02-007 | Locking block | | 1 |
| 449 | GB/T70.1-2000 | Screw | M5×8 | 1 |
| 450 | JB/T7940.4-1995 | Oiler | Ø6 | 1 |
| 451 | HQ400-14T02-011 | Nut | Tr12 | 1 |
| 452 | HQ400-14T02-012 | Lead screw | Tr12 | 1 |
| 453 | HQ400-14T02-013 | Lead screw bracket | | 1 |
| 454 | JB/T7270.10-1994 | Handle | BM8×25 | 1 |
| 455 | GB/T117-2000 | Pin | 3×16 | 1 |
| 456 | HQ400-14T02-009 | Bolt | M10×100 | 1 |
| 457 | HQ400-14T02-008 | Tool post base | | 1 |
| 458 | GB/T2089-80 | Spring | 0.6×5×30 | 1 |
| 459 | HQ400-14-007 | Set pin | | 1 |
| 460 | HQ400-14-003 | Tool post | | |
| 461 | GB/T85-1988 | screw | M8×25 | 8 |
| 462 | HQ400-14-005 | Compensating washer | | 1 |
| 463 | HQ400-13-004 | Nut | | 1 |
| 464 | HQ400-13-005 | Handle | | 1 |
| 465 | JB/T7271.3-1994 | Knob | M10×32 | 1 |

580508
PARTS BREAKDOWN



| Index No. | Part No. | Description | Size | Qty. |
|-----------|----------------|------------------------|---------|------|
| 501 | JB/T7270.5-94 | Handle | M6×50 | 1 |
| 502 | GB/T923-88 | Acorn Nut | M10 | 1 |
| 503 | GB/T97-85 | Flat Washer | 10 | 1 |
| 504 | JB/T7273.3-94 | Hand Wheel | B12×100 | 1 |
| 505 | HQ400/4-10-015 | Scale ring base | | 1 |
| 506 | HQ500-10-016 | Spring piece | | 1 |
| 507 | HQ400-13-010 | Scale ring | | 1 |
| 508 | GB/T70-85 | Screw | M4×20 | 4 |
| 509 | HQ400-13-009 | Feed Screw Socket | | 1 |
| 510 | JB/T7940.4-95 | Oiler | 6 | 3 |
| 511 | HQ400-13-008 | Bracket | | 1 |
| 512 | GB/T879-86 | Pin | 5×22 | 1 |
| 513 | GB/T1096-79 | Key | C4×18 | 1 |
| 514 | HQ400-13-006 | Feed Screw | | 1 |
| 515 | HQ400-13-001 | Tail Stock Body | | 1 |
| 516 | GB/T819-85 | Screw | M5×14 | 2 |
| 517 | HQ400-13-004 | Key | | 2 |
| 518 | GB/T73-85 | Screw | M10×50 | 2 |
| 519 | GB/T97.2-85 | Washer | 10 | 4 |
| 520 | GB/T5780-2000 | Screw | M10×40 | 4 |
| 521 | HQ400-13-011 | Locking block (Bottom) | | 1 |
| 522 | HQ400-13-012 | Locking block (Top) | | 1 |
| 523 | GB/T899-88 | Double-Screw Bolt | AM10×40 | 1 |
| 524 | HQ400-13-013 | Washer | | 1 |
| 525 | HQ400-13-004 | Locking Nut | | 1 |
| 526 | HQ400-13-005 | Locking Lever | | 1 |
| 527 | JB/T7271.3-94 | Knob | M10×32 | 1 |
| 528 | GB/T71-85 | Set Screw | M4×8 | 1 |
| 529 | HQ400-13-007 | Feed Nut | | 1 |
| 530 | HQ400-13-003 | T-Key | | 1 |
| 531 | HQ400-13-002 | Tail Stock Barrel | | 1 |

580508
PARTS BREAKDOWN



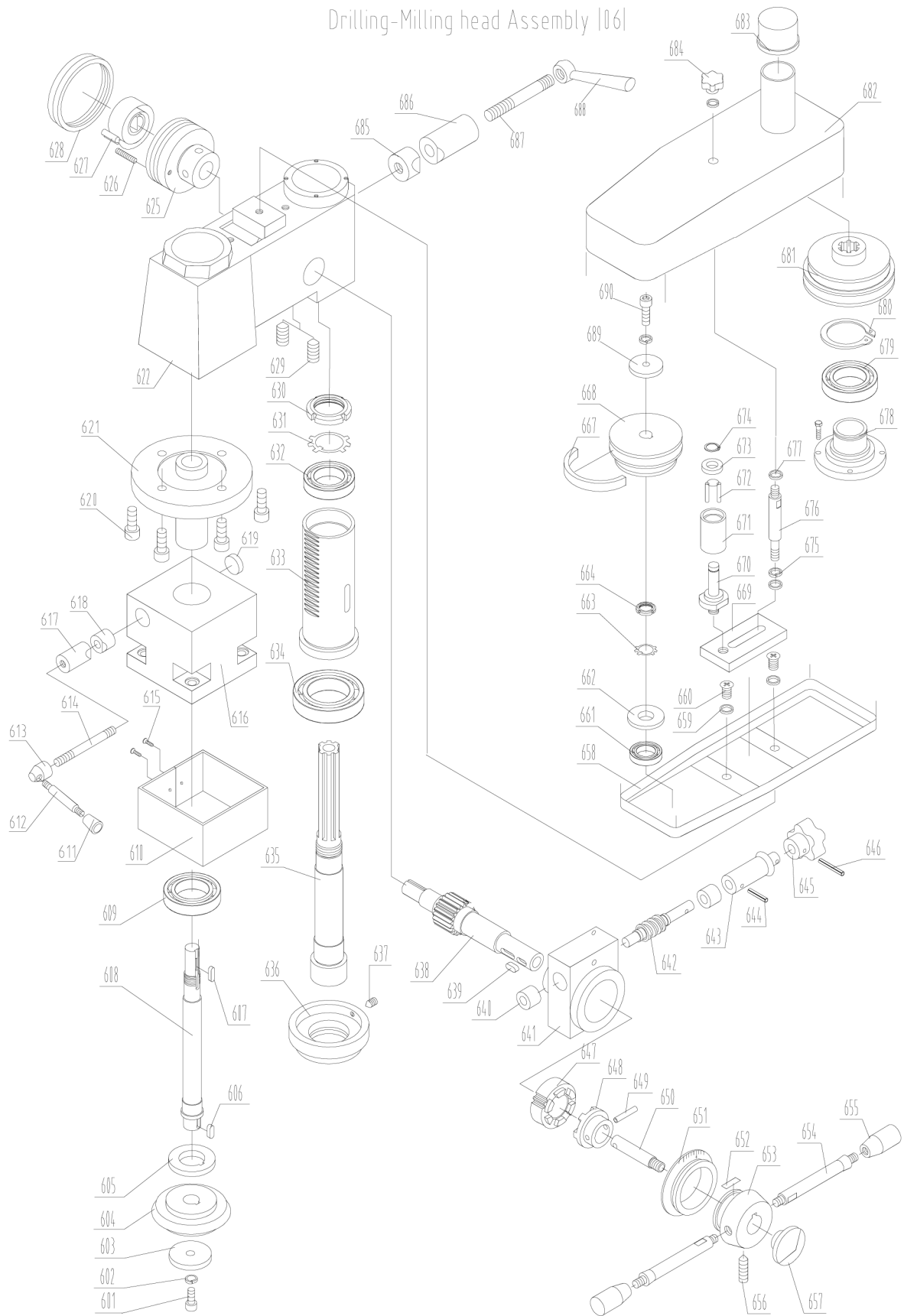
| Index No. | Part No. | Description | Size | Qty. |
|-----------|-----------------|------------------------------|---------|------|
| 601 | GB/T70-85 | Screw | M5×16 | 1 |
| 602 | GB/T93-87 | Spring washer | 5 | 1 |
| 603 | GB/T892-86 | Washer | B28 | 1 |
| 604 | HQ400-24-001 | Bevel Gear (B) | | 1 |
| 605 | HQ400-24-002 | Compensating Collar | | 1 |
| 606 | GB/T1096-79 | Key | 6×14 | 1 |
| 607 | GB/T68-1985 | Screw | M5×10 | 1 |
| 608 | HQ400/1-24-002 | Driving Shaft A | | 1 |
| 609 | GB/T1096-79 | Key | 5×25 | 1 |
| 610 | GB/T276-94 | Bearing | 30205 | 1 |
| 611 | HQ400/1-24-007 | Rotation base | | 1 |
| 612 | GB/T308 | Steel ball | 6 | 35 |
| 613 | GB/T70-1985 | Screw | M10×30 | 4 |
| 614 | JB/T7271.3-1994 | Knob | M6×20 | 2 |
| 615 | JB/T7271.6-1994 | Lever | BM6×50 | 2 |
| 616 | GB/T70-1985 | Screw | M6×10 | 2 |
| 617 | HQ400/1-24-003 | Plate | | 1 |
| 618 | GB/T276-1994 | Bearing | 6007 | 1 |
| 619 | HQ400/I-24-010 | Nut | | 1 |
| 620 | GB/T68-1985 | Screw | M5×8 | 1 |
| 621 | HQ400/1-24-001 | Drilling-milling head | | 1 |
| 622 | HQ400/1-24-004 | Locking pin | | 1 |
| 623 | HQ400/1-24-005 | Locking bolt seal | | 1 |
| 624 | GB/T77-1985 | Screw | M16×20 | 1 |
| 625 | HQ500-05-007 | Spring box | | |
| 626 | GB/T71-1985 | Screw | M5×25 | 1 |
| 627 | HQ500-05-006 | Spring | | 1 |
| 628 | HQ400-24-019 | Spring box cover | | 1 |
| 629 | GB/T71-1985 | Screw | M8×16 | 2 |
| 630 | GB/T812-88 | Bearing Locking Nut | M30×1.5 | 1 |
| 631 | GB/T858-88 | Stop Washer | 30 | 1 |
| 632 | GB/T297-94 | Bearing | 2007106 | 1 |
| 633 | HQ400-22-003 | Hollow Shaft | | 1 |
| 634 | GB/T297-94 | Bearing | 2007107 | 1 |
| 635 | HQ400-22-004 | Drilling-Milling Shaft | | 1 |
| 636 | HQ400-22-002 | Drilling-Milling Shaft Gland | | 1 |
| 637 | GB/T71-85 | Set Screw | M5×6 | 1 |
| 638 | HQ500-07-001 | Pinion Shaft | | 1 |
| 639 | GB/T1096-86 | Key | 6×14 | 1 |
| 640 | HQ400-23-010 | Bush | | 2 |
| 641 | HQ500-07-002 | Feed box | | 1 |
| 642 | HQ400-23-004 | Worm shaft | | 1 |
| 643 | HQ400-23-011 | Handle | | 1 |
| 644 | GB/T879 | Pin | 4×20 | 1 |
| 645 | JB/T7274.4 | Knob | 12×50 | 1 |
| 646 | GB/T879 | Pin | 4×28 | 1 |

| | | | | |
|-----|-----------------|-----------------------|---------|----|
| 647 | HQ400-23-005 | Worm | | 1 |
| 648 | HQ400-23-006 | Clutch | | 1 |
| 649 | GB/T119-1976 | Pin | 5×28 | 1 |
| 650 | HQ400-23-009 | Shaft | | 1 |
| 651 | HQ400-23-007 | Dial | | 1 |
| 652 | HQ500-10-016 | Spring piece | | 1 |
| 653 | HQ400-23-013 | Collar | | 1 |
| 654 | HQ400-23-001 | Handle | | 2 |
| 655 | JJB/T7271.5 | Knob | BM8×40 | 2 |
| 656 | GB/T71-85 | Set Screw | M6×18 | 1 |
| 657 | JB/T7274.2 | Knob | BM10×40 | 1 |
| 658 | HQ400-24-011 | Pulley shell (bottom) | | 1 |
| 659 | GB93-87 | Washer | 8 | 2 |
| 660 | GB/T67-1985 | Screw | M8×14 | 2 |
| 661 | HQ400/1-24-008 | Driving shaft | | 1 |
| 662 | GB/T1096-1979 | Key | 5×25 | 1 |
| 663 | GB/T893-1986 | Circlet | 42 | 1 |
| 664 | GB/T276-1994 | Bearing | 6004 | 1 |
| 665 | HQ400/1-24-012 | Bearing bracket | | 1 |
| 666 | GB/T5780-1986 | Bolt | M5×16 | 8 |
| 667 | GB1171 | V-belt | Z-710 | 1 |
| 668 | HQ400-24-013 | Pulley (E) | | 1 |
| 669 | HQ400-21-001 | Tightened board | | 1 |
| 670 | HQ400-21-003 | Tightened shaft | | 1 |
| 671 | HQ400-21-002 | Belt tightener | | 1 |
| 672 | GB/T309-1977 | Roller | 2.5×24 | 15 |
| 673 | GB848-85 | Collar | 10 | 1 |
| 674 | GB/T894-86 | Circlet | 10 | 1 |
| 675 | GB93-87 | Spring washer | 8 | 6 |
| 676 | HQ400-24-020 | Shell bolt | | 1 |
| 677 | GB848-85 | Washer | 8 | 5 |
| 678 | HQ400-24-015 | Pulley bracket | | 1 |
| 679 | GB/T276-1994 | Bearing | 6008 | 1 |
| 680 | GB/T894-1986 | Retain ring | 40 | 1 |
| 681 | HQ400-24-014 | Pulley (F) | | 1 |
| 682 | HQ400-24-012 | Cover (top) | | 1 |
| 683 | HQ400-24-021 | Cover | | 1 |
| 684 | JB/T7274.4-1994 | Knob | BM8×62 | 1 |
| 685 | HQ400-24-022B | Locking block A | | 1 |
| 686 | HQ400-24-022A | Locking block A | | 1 |
| 687 | GB/T899-1988 | Double end bolt | A8×60 | 1 |
| 688 | JB/T7270.7-1994 | Handle | BM8×66 | 1 |
| 689 | GB/T892-1986 | Stop washer | B28 | 1 |
| 690 | GB/T70-1985 | Screw | M5×16 | 1 |

580508
PARTS BREAKDOWN



Drilling-Milling head Assembly 1061



DRILLING-MILLING HEAD ASSEMBLY (06)

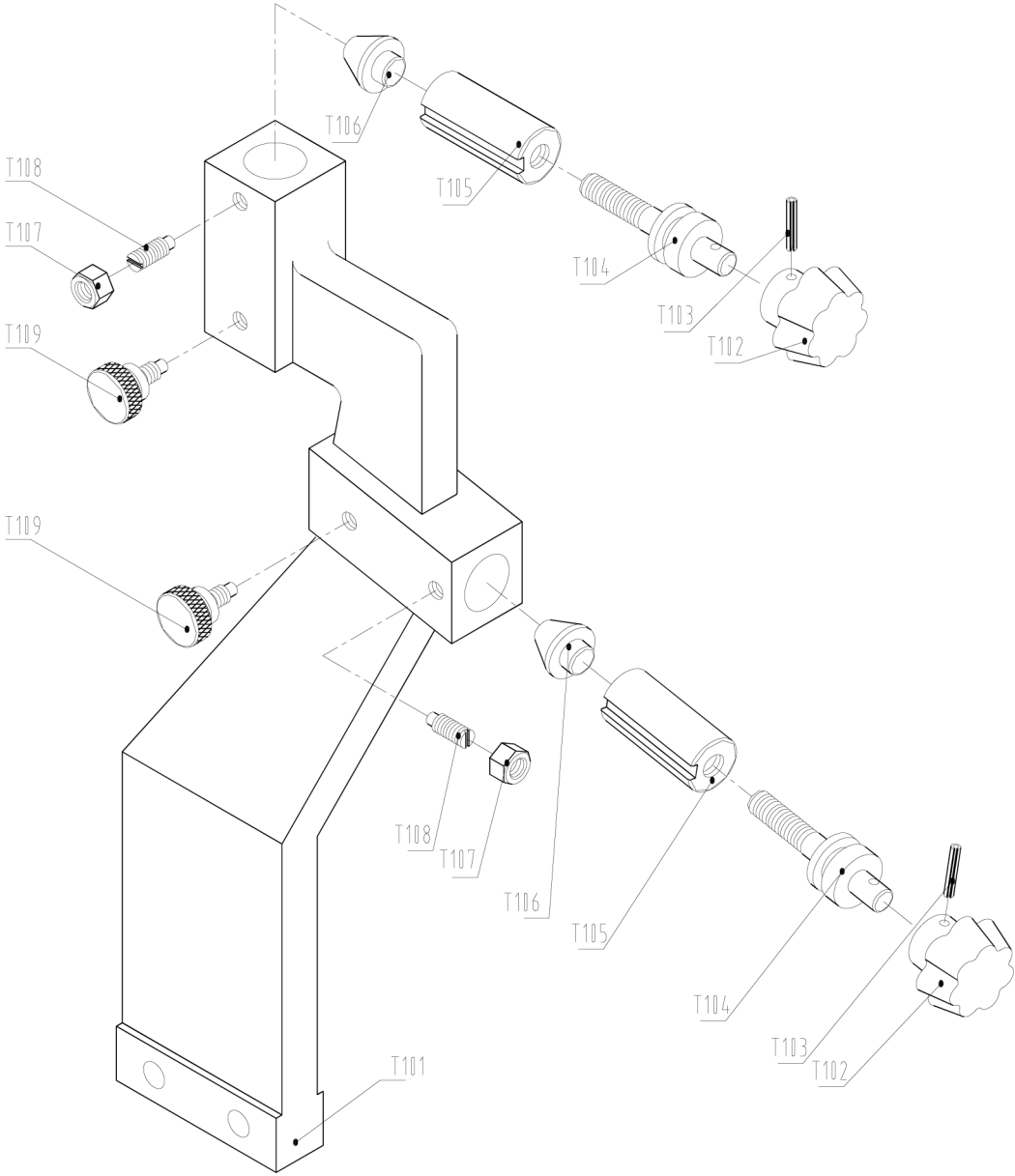
| Index No. | Part No. | Description | Size | Qty. |
|-----------|-----------------|--------------------------|---------|------|
| 601 | GB/T70-85 | Screw | M5×16 | 1 |
| 602 | GB/T93-87 | Spring washer | 5 | 1 |
| 603 | GB/T892-86 | Washer | B28 | 1 |
| 604 | HQ400-24-001 | Bevel gear (B) | | 1 |
| 605 | HQ400-24-002 | Compensating collar | | 1 |
| 606 | GB/T1096-79 | Key | 6×14 | 1 |
| 607 | GB/T1096-79 | Key | 5×25 | 1 |
| 608 | HQ400-24-003 | Driving shaft | | 1 |
| 609 | GB/T297-94 | Bearing | 30205 | 1 |
| 610 | HQ400-00-015 | Rotative base ring | | 1 |
| 611 | GB/T7271.3-1994 | Knob | M10×32 | 1 |
| 612 | HQ400-13-005 | Clock handle | | 1 |
| 613 | HQ400-13-004 | Clock nut | | 1 |
| 614 | GB/T899-1988 | Double end screw | A10×85 | 1 |
| 615 | GB/T68-2000 | Screw | M5×10 | 2 |
| 616 | HQ400-24-004 | Rotative base | | 1 |
| 617 | HQ400-24-023 | Lock block B | | 1 |
| 618 | HQ400-24-023 | Lock block B | | |
| 619 | HQ500-02-020 | Plug | | 1 |
| 620 | GB/T70-1985 | Screw | M10×25 | 4 |
| 621 | HQ400-24-008(A) | Rotative flange(A) | | 1 |
| 622 | HQ400-24-009 | Drilling-milling head | | 1 |
| 625 | HQ500-05-007 | Spring box | | |
| 626 | GB/T71-1985 | Screw | M5×25 | 1 |
| 627 | HQ500-05-006 | Spring | | 1 |
| 628 | HQ400-24-019 | Spring box cover | | 1 |
| 629 | GB/T71-1985 | Screw | M8×16 | 2 |
| 630 | GB/T812-88 | Bearing locking nut | M30×1.5 | 1 |
| 631 | GB/T858-88 | Stop washer | 30 | 1 |
| 632 | GB/T297-94 | Bearing | 2007106 | 1 |
| 633 | HQ400-22-003 | Rack sleeve | | 1 |
| 634 | GB/T297-94 | Bearing | 2007107 | 1 |
| 635 | HQ400-22-004 | Drilling-Milling spindle | | 1 |
| 636 | HQ400-22-002 | Gland | | 1 |
| 637 | GB/T71-85 | Set screw | M5×6 | 1 |
| 638 | HQ500-07-001 | Gear shaft | | 1 |
| 639 | GB/T1096-86 | Key | 6×14 | 1 |
| 640 | HQ400-23-010 | Bush | | 2 |
| 641 | HQ500-07-002 | Feed box | | 1 |
| 642 | HQ400-23-004 | Worm shaft | | 1 |
| 643 | HQ400-23-011 | Handle | | 1 |
| 644 | GB/T879 | Pin | 4×20 | 1 |
| 645 | JB/T7274.4 | Knob | 12×50 | 1 |

| | | | | |
|-----|-----------------|-----------------------|---------|----|
| 646 | GB/T879 | Pin | 4×28 | 1 |
| 647 | HQ400-23-005 | Worm | | 1 |
| 648 | HQ400-23-006 | Clutch | | 1 |
| 649 | GB/T119-1976 | Pin | 4×28 | 1 |
| 650 | HQ400-23-009 | Shaft | | 1 |
| 651 | HQ400-23-007 | Dial | | 1 |
| 652 | HQ500-10-016 | Spring piece | | 1 |
| 653 | HQ400-23-013 | Collar | | 1 |
| 654 | HQ400-23-001 | Handle | | 2 |
| 655 | JB/T7271.5 | Knob | BM8×40 | 2 |
| 656 | GB/T71-85 | Set Screw | M6×18 | 1 |
| 657 | JB/T7274.2 | Knob | BM10×40 | 1 |
| 658 | HQ400-24-011 | Pulley shell (bottom) | | 1 |
| 659 | GB93-87 | Washer | 8 | 2 |
| 660 | GB/T67-1985 | Screw | M8×14 | 2 |
| 661 | GB/T297-94 | Bearing | 30204 | 1 |
| 662 | HQ400-24-010 | Collar | | 1 |
| 663 | GB/T858-1988 | Stop washer | 20 | 1 |
| 664 | GB/T812-1988 | Nut | M20×1.5 | 1 |
| 667 | GB1171-2006 | V-belt | Z-710 | 1 |
| 668 | HQ400-24-013 | Pulley (E) | | 1 |
| 669 | HQ400-21-001 | Tightened board | | 1 |
| 670 | HQ400-21-006 | Tightened shaft | | 1 |
| 671 | HQ400-21-002 | Belt tightener | | 1 |
| 672 | GB/T609-1977 | Roller | 2.5×24 | 15 |
| 673 | GB848-85 | Collar | | 1 |
| 674 | GB/T894-1976 | Circlet | 10 | 1 |
| 675 | GB93-87 | Spring washer | 8 | 6 |
| 676 | HQ400-24-020 | Shell bolt | | 1 |
| 677 | GB848-85 | Washer | 8 | 5 |
| 678 | HQ400-24-011 | Pulley bracket | | 1 |
| 679 | GB/T276-1994 | Bearing | 6008 | 1 |
| 680 | GB/T894-1986 | Retain ring | 40 | 1 |
| 681 | HQ400-24-014 | Pulley (F) | | 1 |
| 682 | HQ400-24-012 | Cover (top) | | 1 |
| 683 | HQ400-24-021 | Cover | | 1 |
| 684 | JB/T7274.4-1994 | Knob | BM8×62 | 1 |
| 685 | HQ400-24-022B | Lock block A | | 1 |
| 686 | HQ400-24-022A | Lock block A | | 1 |
| 688 | JB/T7270.7-1994 | Handle | BM8×66 | 1 |
| 689 | GB/T892-1986 | Stop washer | B28 | 1 |
| 690 | GB/T70-1985 | Screw | M5×16 | 1 |

580508
PARTS BREAKDOWN



Follow Rest Assembly ITI



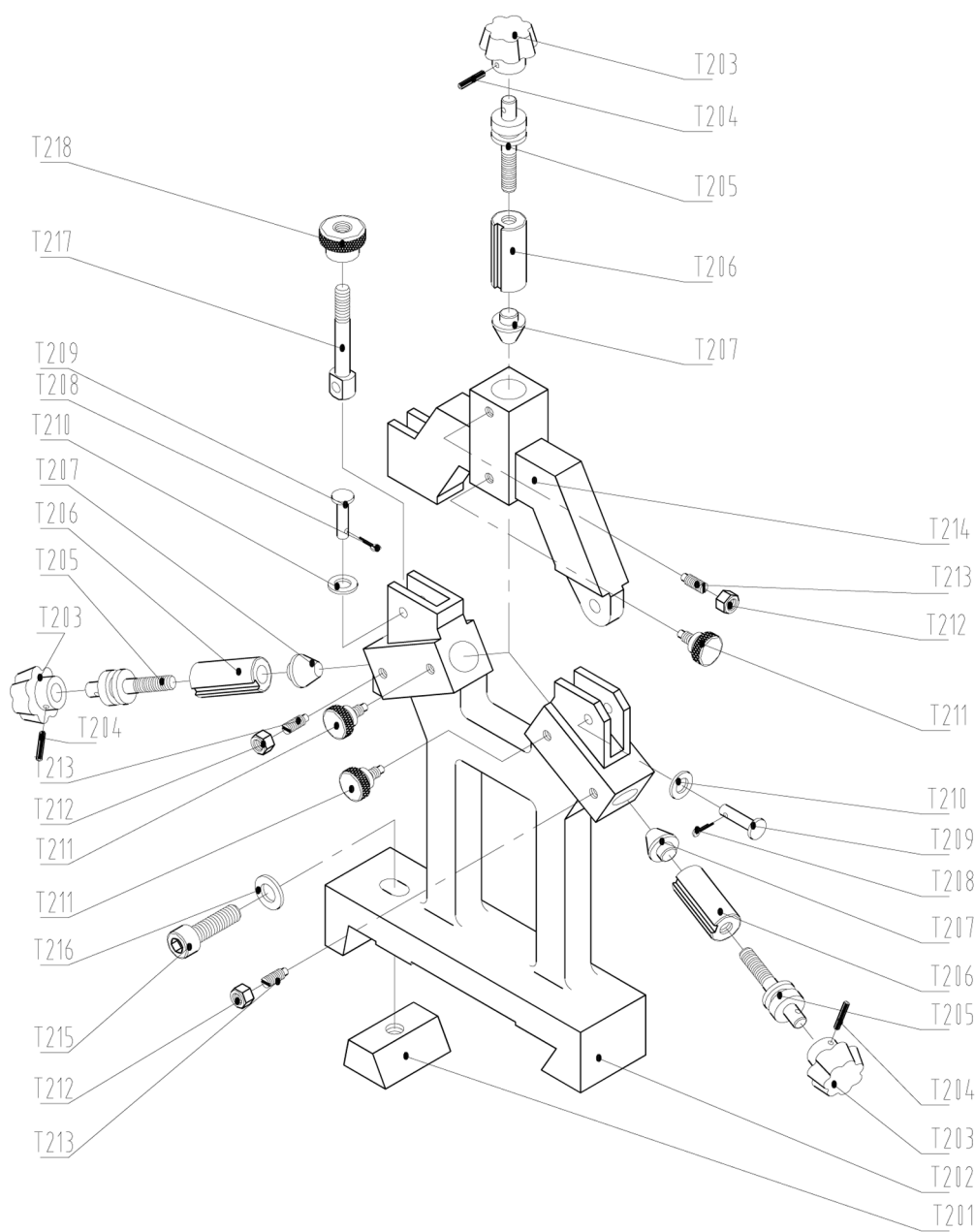
FOLLOW REST ASSEMBLY (T)

| Index No. | Part No. | Description | QTY. |
|-----------|-----------------|-------------------|------|
| T101 | HQ500-10T04-005 | Follow rest frame | 1 |
| T102 | JB/T7274.40 | Handle 8×32 | 2 |
| T103 | GB/T879 | Spring pin 3×16 | 2 |
| T104 | HQ500-10T04-001 | Adjusting bolt | 2 |
| T105 | HQ500-10T04-003 | Sleeve | 1 |
| T106 | HQ500-10T04-004 | Brass head | 2 |
| T107 | GB/T41 | Hex nut M6 | 2 |
| T108 | GB/T75 | Set screw M6×16 | 2 |
| T109 | HQ500-10T04-002 | Knurled screw | 2 |

580508
PARTS BREAKDOWN



Steady Rest Assembly ITI



STEADY REST ASSEMBLY (T)

| Index No. | Part No. | Description | QTY. |
|-----------|-----------------|------------------|------|
| T201 | HQ500-10T05-005 | Locking block | 1 |
| T202 | HQ500-10T05-001 | Steady rest base | 1 |
| T203 | JB/T7274.4 | Handle 8×32 | 1 |
| T204 | GB/T879 | Spring pin3×16 | 3 |
| T205 | HQ500-10T04-001 | Adjusting bolt | 3 |
| T206 | HQ500-10T04-003 | Sleeve | 3 |
| T207 | HQ500-10T04-004 | Brass head | 3 |
| T208 | GB/T91 | Cotter pin1.6×20 | 2 |
| T209 | GB/T882 | Pin A6×26 | 2 |
| T210 | GB/T848 | Washer 8 | 2 |
| T211 | HQ500-10T04-002 | Knurled screw | 3 |
| T212 | GB/T41 | Hex nut M6 | 3 |
| T213 | GB/T75 | Set screw M6×16 | 3 |
| T214 | HQ500-10T05-004 | Steady rest head | 1 |
| T215 | GB/T70 | Screw M10×35 | 1 |
| T216 | GB/T848 | Washer 10 | 1 |
| T217 | HQ500-10T05-002 | Locking bolt | 1 |
| T218 | HQ500-10T05-003 | Knob | 1 |