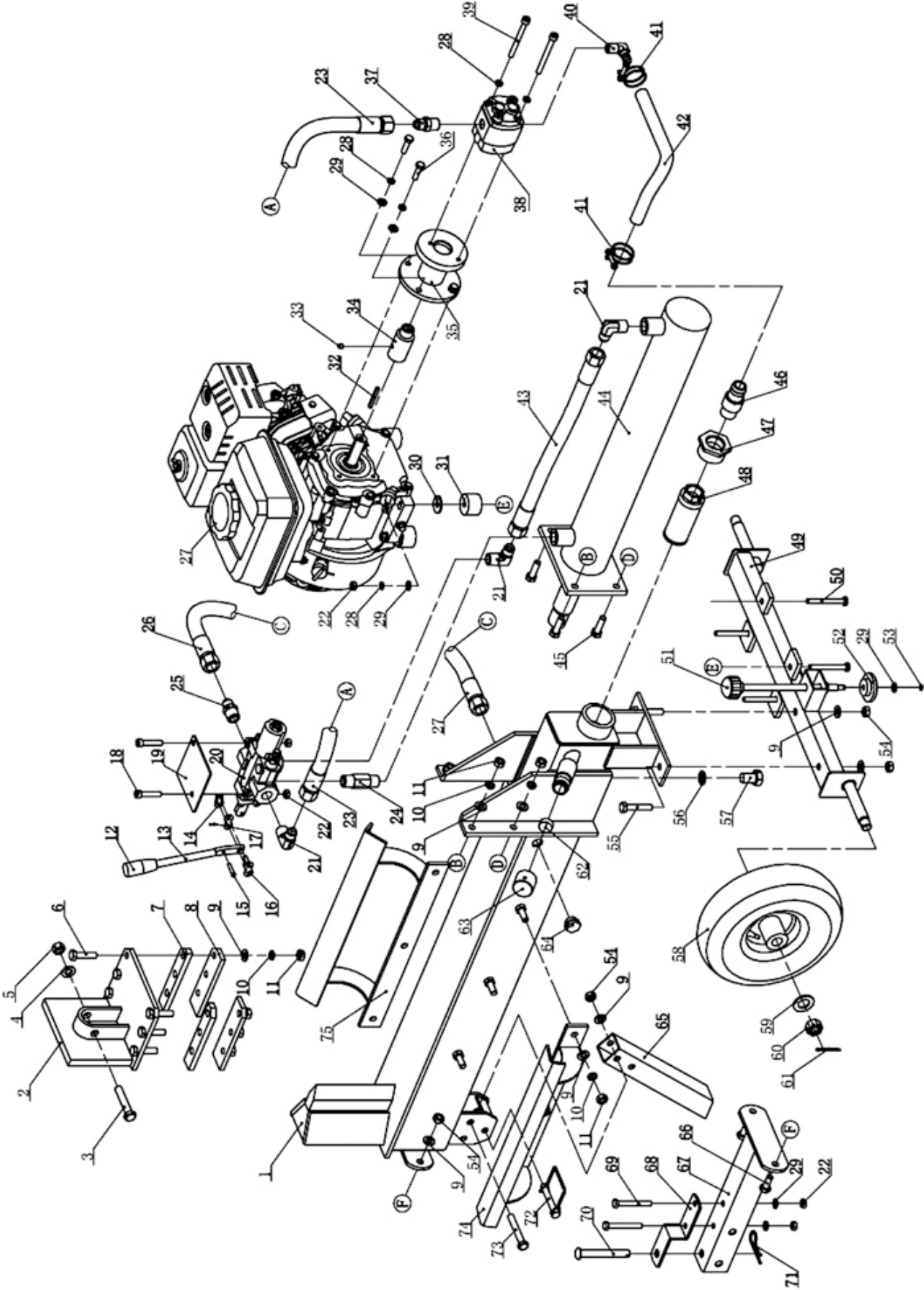


596827

PARTS BREAKDOWN



Component	Item Description
595771	Log Splitter Wheels Suit 596827 18t
594596	Log Splitter Less Motor 6.5Hp Honda GX200QXU Suit 18Ton 3.5" Cylinder For 596827
595762	Log Splitter Cylinder 18T 3.5" Suit 596827
595763	Log Splitter Gear Pump Suit 596827 18T
595765	Log Splitter Control Valve Suit 596827 18T
595767	Log Splitter Cylinder Seal Set Suit 596827 18T Cylinder Part No 595762
595773	Log Splitter Hoses Set Suit 596827 18T
595770	Log Splitter Oil Filter Suit 596817, 596827, 596824
595776	Log Splitter Oil Tank Cap Suit 596827, 596828, 596829 18T 30T 45T

596827

PARTS BREAKDOWN



Ref. No	Description	Qty	Ref. No	Description	Qty
1	Beam	1	39	Inner Hex Screw M8×90	1
2	Pusher	1	40	Gear pump Inlet Tube Connector	1
3	Hex Bolt M10×65	1	41	Clamp	2
4	Flat Washer ϕ 10	2	42	Suction hose	1
5	Hex Lock Nut M10	1	43	High Pressure Hose B	1
6	Hex Bolt M10×40	6	44	Cylinder	1
7	Wedge Spacer	2	45	Hex Bolt M10×35	4
8	Wedge Plate	2	46	Inlet Tube Connector	1
9	Flat Washer ϕ 10	21	47	Nut ZG1 1/2	1
10	Spring Washer ϕ 10	16	48	Oil filter 40×180-J	1
11	Hex Nut M10	16	49	Wheel Stand	1
12	Valve Handle cover	1	50	Hex Bolt M8×70	4
13	Valve Handle	1	51	Adjustable support	1
14	Chain Plate Lock	1	52	Support base	1
15	Pin 5×25B	1	53	Axial Spring Collar ϕ8	1
16	Chain plate	2	54	Hex Lock Nut M10	5
17	Cotter Pin ϕ1.6×10	1	55	Hex Bolt M10×50	2
18	Screw M8×40	2	56	Washer ϕ10	1
19	Plate	1	57	Nut 16×1.5	1
20	Control Valve	1	58	Wheel 10"	2
21	Connector Z1/2 -M18×1.5	3	59	Flat Washer ϕ16	2
22	Hex Lock Nut M8	8	60	Nut M16×1.5	2
23	High Pressure Hose A	1	61	Cotter Pin ϕ3.2×36	2
24	Connector	1	62	Sponge Filter	1
25	Connector Z1/2 -M18×1.5	1	63	Oil Plug	1
26	High Pressure Hose C	1	64	Oil Plug Bolt	1
27	6.5HP Engine	1	65	Front Support Leg	1
28	Lock Washer ϕ8	10	66	Hex Bolt M10×25	2
29	Flat Washer ϕ8	11	67	Tow Bar	1
30	Big Flat Washer ϕ10	4	68	Hitch Tongue	1
31	Shock Absorption Feet	4	69	Hex Bolt M8×65	2
32	Engine Bushing	1	70	Round Pin	1
33	Flat Key	1	71	R Pin	1
34	Engine Connector	1	72	Lock Pin	1
35	Gear Pump Stand	1	73	Hex Bolt M10×70	1
36	Hex Bolt M8×30	4	74	Left Log Cradle	1
37	Gear Pump Connector 3/8"-M18x1.5	1	75	Right Log Cradle	1
38	Gear pump	1			