



# **2000KG HYDRAULIC TROLLEY JACK**



## **OPERATOR'S MANUAL & PARTS LIST**

**(PART NO. 594735)**

**WARNING:** Before using this appliance, read this operator's manual and follow all its safety rules and operating instructions

## SPECIFICATIONS



**Rated Capacity  
(Working Load Limit)  
2000KG**

**Height Lowered  
100mm**

**Height Raised  
460mm**

## OPERATIONS

The owner and/or operator is responsible for providing maintenance, maintaining all decals or warning labels and while in use, maintaining the unit in good order. The jack shall be inspected per the instruction manual prior to use.

It is the owner and/or operators responsibility to study all WARNINGS, operating and maintenance instructions contained on the product label and instruction manual prior to operation of this unit. The owner/operators shall retain product instructions for future reference.

### **WARNING!**

**THE JACK MUST BE USED ONLY ON HARD LEVEL SURFACES AND BE FREE TO ROLL DURING LIFTING AND LOWERING. DO NOT GET UNDER A VEHICLE THAT IS SUPPORTED BY A TROLLEY JACK – USE AS/NZS COMPLIANT SUPPORT STANDS\***

**\*e.g. (AS/NZS COMPLIANT TOOLEX STANDS: 2 TONNE (533598) 4 TONNE (533599)**

## RAISING VEHICLE

1. Make sure the jack and vehicle are on a hard level surface only & free to roll during lifting & lowering.
2. The unlifted wheels of the vehicle should be chocked.
3. The load should be centrally located on the head cap (saddle).
4. No person should remain in a vehicle that is being lifted.
5. The hydraulic trolley jack should be used for lifting and lowering only; the raised vehicle should be supported on vehicle support stands.
6. No person should get bodily under a vehicle that is supported by a hydraulic trolley jack.
7. The vehicle manufacturer Owner's Manual should be consulted prior to the lifting of the vehicle.
8. Position jack to take load on centre of saddle.
9. Turn the release valve clockwise to the closed position. **DO NOT OVER TIGHTEN!**
10. To raise the vehicle to desired height, place the handle into the socket and pump up and down.
11. Place jack support stands beneath the vehicle at locations recommended by the vehicle manufacturer. Do not get under the vehicle without jack stands. Jacks are a lifting device only and are not designed to maintain heavy loads for long periods of time.
12. Turn release valve **SLOWLY** counterclockwise to lower load onto jack stands.

## LOWERING VEHICLE

1. Turn the release valve clockwise to the closed position.
2. Pump the handle to lift vehicle off the jack stands.
3. Remove the jack stands. Do not get under or let anyone else under the vehicle while lowering.
4. Turn the release valve SLOWLY counterclockwise to lower the vehicle onto the ground.

## INSPECTION

The product should be maintained in accordance with the product instructions. No alterations should be made to this product.

1. Before use, a visual inspection shall be made for abnormal conditions such as cracked welds, damage, bent, worn, loose or missing parts.
2. Inspections shall be performed in accordance to this manual.
3. The product shall be inspected immediately if it is believed to have been subjected to abnormal load or shock. Owners and/or operators should be aware that repair of this product may require specialised equipment and knowledge. (See below: Maintenance)

## MAINTENANCE

Regular maintenance is recommended. Lubrication is critical to jacks as they support heavy loads. Any restriction due to dirt, rust, etc, can cause either slow movement or cause extremely rapid jerks damaging the internal components. The following steps are designed to keep the jack well lubricated:

1. Regularly lubricate moving parts in lift arm saddle, linkage handle, socket and wheels with light oil.
2. Thoroughly grease pump plunger and pin in handle socket.
3. Use specifically blended jack oil or S.A.E 10 grade oil to top up. Check oil level with jack in level position with release valve open and lifting arm fully down. Oil should be level with bottom of thread inside oil chamber. If required add oil through vent Plug located under cover plate. The oil should be kept at the recommended levels.
4. To bleed air after top up close release valve and pull lifting arm to full height, open release valve while forcing arm down as quickly as possible and close valve after air is emitted. Repeat three or four times.
5. Visually inspect for cracked welds, bent, loose, missing parts, hydraulic oil leaks, etc.
6. If jack is subjected to abnormal load or shock, remove from service and have it examined by a customer service representative prior to use.
7. Clean all surfaces and maintain all labels and warnings.
8. Check ram every 3 months for any sign of rust or corrosion. Clean as needed and wipe with an oil cloth. When not in use, always leave the saddle and ram all the way down.

Always store your jack in the fully lowered position. This will help protect critical areas from excessive corrosion.

Do not use brake or transmission fluids or regular motor oil as they can damage the seals. Always purchase and use products labelled Hydraulic Jack Oil.

## CHECK OIL LEVEL

1. Turn release valve counterclockwise to allow ram to fully retract. It may be necessary to apply force to the saddle for lowering.
2. With the jack in the level position, remove the oil fill plug. Stand jack in vertical position with handle socket down. The oil should be level with the bottom of fill hole. If not, top off. Do not overfill. Always fill with new, clean hydraulic jack oil.
3. Replace fill plug and inspection plate.
4. Check jack operation.
5. Purge air from system as required.

## TROUBLE SHOOTING

System Air Purge:

1. Turn release valve counterclockwise one full turn to open
2. Pump handle eight full strokes.
3. Turn release valve clockwise to close valve.

PROBLEM	POSSIBLE CAUSE	ACTION
Jack will not lift to full height	Low oil level	Check oil level
Lift arm will not lower	Release valve not closing Hydraulic jack oil contaminated Pump valves not sealing Cylinder ram binding	Call customer service
Jack feels spongy when lifting	See Air Purge section	See Air Purge procedure

## FACTORY SERVICE

Any hydraulic jack found damaged in any way, found to be worn or operates abnormally, shall be removed from service until repaired by an authorized customer service representative. Owners and/or operators should be aware that repair of this product may require specialised equipment and knowledge. Only factory authorized parts, labels, decals shall be used on this equipment. Call customer service department. Annual inspection of the jack is recommended and shall be made by the manufactures or suppliers authorised repair facility to ensure that your jack is in optimum condition and that the jack has the correct decals and safety labels specified by the manufacturer.

## WARNING!

- READ, STUDY AND UNDERSTAND ALL WARNINGS AND OPERATING INSTRUCTIONS PRIOR TO USE.
- DO NOT OVERLOAD THIS JACK BEYOND THE RATED CAPACITY
- THIS JACK IS DESIGNED FOR USE ONLY ON HARD LEVEL SURFACES CAPABLE OF SUSTAINING THE LOAD. USE, OTHER THAN HARD LEVEL SURFACES, CAN RESULT IN JACK INSTABILITY AND POSSIBLE LOSS OF LOAD.
- NO PERSON SHOULD REMAIN IN A VEHICLE THAT IS BEING LIFTED.
- THIS IS A LIFTING DEVICE ONLY. IMMEDIATELY AFTER LIFTING, SUPPORT THE VEHICLE WITH JACK STANDS.
- DO NOT GET UNDER OR ALLOW ANYONE UNDER THE VEHICLE UNTIL IT HAS BEEN SUPPORTED BY JACK STANDS.
- DO NOT MOVE OR DOLLY THE VEHICLE WHILE ON THE JACK.
- LIFT ONLY ON AREAS OF THE VEHICLE AS SPECIFIED BY THE VEHICLE MANUFACTURER.
- CENTRE LOAD ON SADDLE PRIOR TO LIFTING.
- NO ALTERATIONS TO THE JACK SHOULD BE MADE.
- FAILURE TO ADHERE TO THESE WARNINGS MAY RESULT IN PERSONAL INJURY AND/OR PROPERTY DAMAGE.

Because of the potential hazards associated with the misuse of equipment of this type. No alterations shall be made to the product without written authorisation of the manufacturer or supplier.

## ASSEMBLING YOUR JACK

Please check that you have all of the parts listed below.

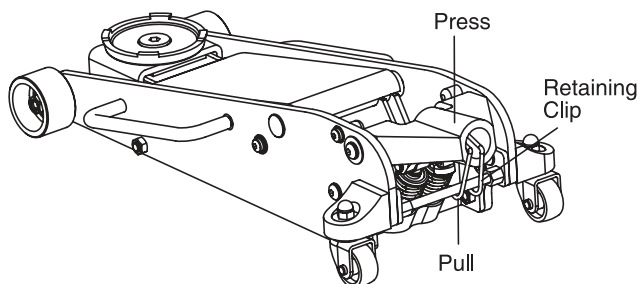
Components:

1 x Aluminium jack chassis

1 x Pumping handle in two parts

First, remove the retaining clip:

Press the yoke down and then pull the retaining clip out from the hole in the base (as pictured).



## HANDLE ASSEMBLY

1. Assemble the handle by inserting the upper handle into the lower handle. The detent ball will lock the two pieces together.
2. Remove the Handle Socket Screw from the Handle Socket put pump handle into handle socket hole engaging the universal joint of the release valve. Ensure the handle is seated completely into the socket then tighten the Handle Socket Screw.

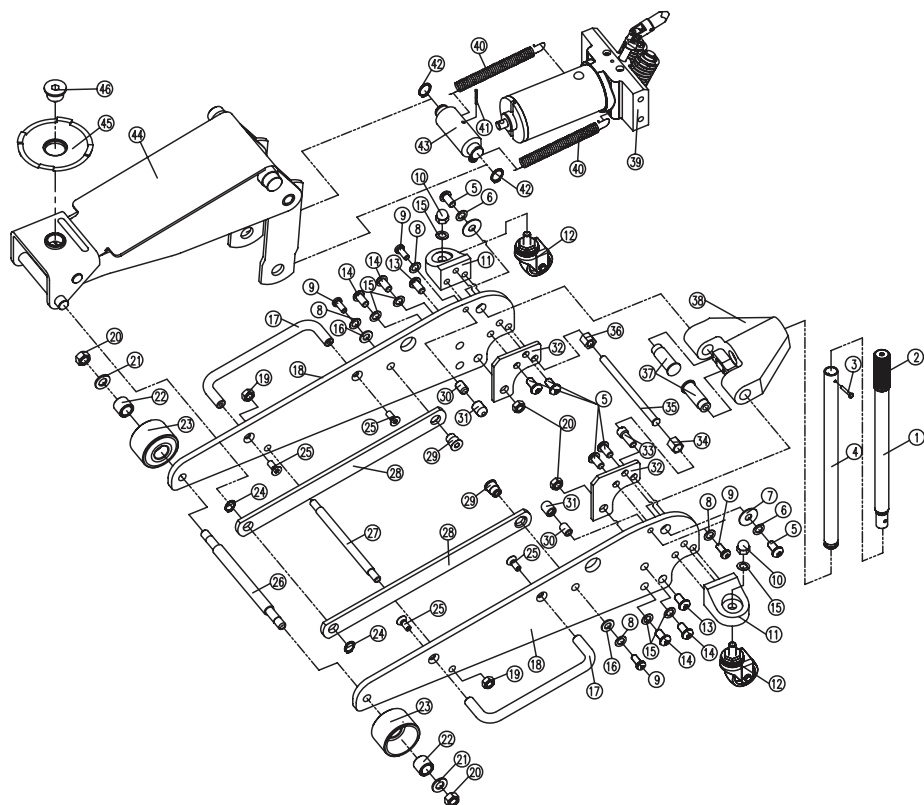
## PARTS LIST

No.	Description
1	Upper Handle
2	Handle Sleeve
3	Bolt M6x35
4	Lower Handle
5	Screw M10x25
6	Washer 10
7	Washer 10
8	Washer 8
9	Screw M8x20
10	Nut M12
11	Rear caster Holder
12	Rear caster Assembly
13	Bolt
14	Screw M12x25
15	Washer 12
16	Washer 8
17	Lifting Handle
18	Side Plate

No.	Description
19	Nut M10
20	Nut M12
21	Washer 12
22	Bushing
23	Front wheel
24	Washer 16
25	Screw M8x20
26	Shaft for front wheel
27	Shaft for connecting rod
28	Connecting rod
29	Pin for connecting rod
30	Locking blocker
31	Rubber sleeve
32	Block plate
33	Screw
34	Nut
35	Shaft
36	Nut

No.	Description
37	Shaft for handle socket
38	Handle socket
39	Power unit assembly
40	Return spring
41	Pin 4x40
42	Washer 20
43	Link block
44	Lifting arm
45	Saddle
46	Shaft for saddle

# PARTS LIST





**Head Office:**  
**55 Griffiths Rd Lambton NSW 2299**  
**Phone: (02) 4906 7700**  
**Fax: (02) 4906 7711**  
**Email: [sales@toolex.com.au](mailto:sales@toolex.com.au)**  
**Website: [www.toolex.com.au](http://www.toolex.com.au)**