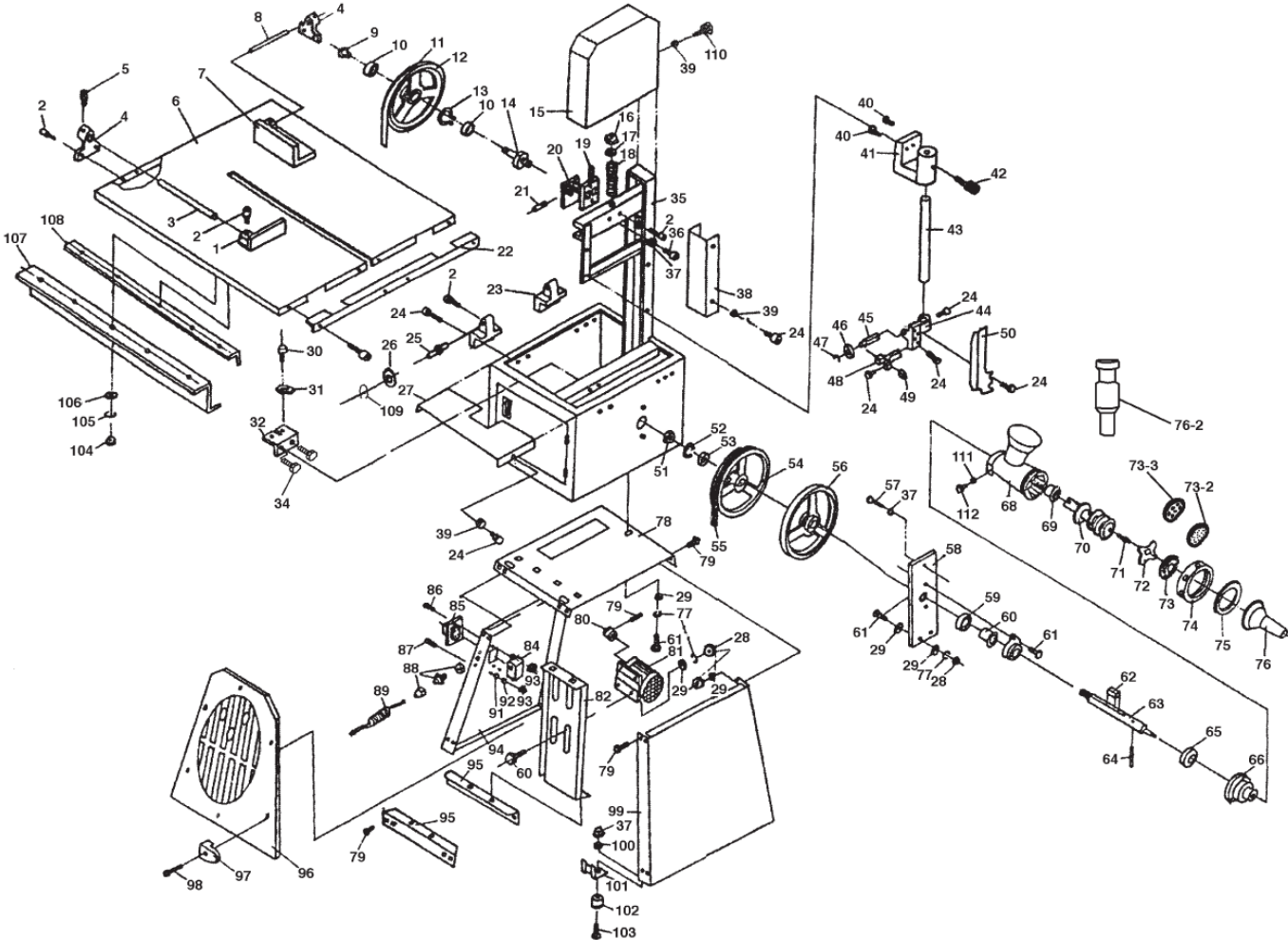


532266
PARTS BREAKDOWN



Item Code	Alternate Code	Extended Description
523729	532266-12	Meatsaw 10"(Ch) U/Blade Wheel 532266-12 Plastic Bag W/Tx Labelling
523730	532266-54	Meatsaw 10"(Ch)-Spindle Wheel 532266-54 (Pulley) Plastic Bag W/ Tx Labelling
523731	532266-55	Meatsaw 10"(Ch) V Belt 532266-55 A53
523732	532266-63	Meatsaw 10"(Ch) Drive ShAft 532266-63 Plastic Bag W/Tx Labelling
523733	532266-71	Meatsaw 10"(Ch) Special Pin 532266-71 Plastic Bag W/Tx Labelling
523734	532266-72	Meatsaw 10"(Ch) Mincer Blade 532266-72 Plastic Bag W/Tx Labelling
523735	532266-68	Meatsaw 10"(Ch) Mincer Body 532266-68 Grinding Hopper Plastic Bag W/Tx Labelling
523736	532266-76	Meatsaw 10"(Ch) Sausage Stuffer 532266-76
524093	532266-6	Meatsaw 10"(Ch) Sliding Table 532266-6 Strong Carton W/Tx Labelling
524094	532266-23	Meatsaw 10"(Ch) Table Supports 532266-23 Plastic Bag W/Tx Labelling
524444	532266-16	Meatsaw 10"-Nut 532266-16
524445	532266-18	Meatsaw 10"-Spring 532266-18
524446	532266-19	Meatsaw 10" Sliding Bracket 532266-19
524447	532266-14	Meatsaw 10"(Ch) U/Wheel ShAft 532266-14 Plastic Bag W/Tx Labelling
524724	532266-69	Meatsaw 10"(Ch) Mincer Tube 532266-69
525510	532266-44	Meatsaw 10"(Ch)Guard Holder (Old Meatsaw) 532266-44
525617	532266-20	Meatsaw 10" Adjusting Plate 532266-20 In Plastic Bag
530297	532266-33	Meatsaw 10"(Ch) Filter Cover 532266-33 Round Knife Plastic Bag W/Tx Labelling
530467	532266- 81	Meatsaw 10"(Ch) Motor 532266- 81
532225	532266- 80	Meatsaw 10"(Ch) Motor Pulley 532266- 80 Plastic Bag W/Tx Labelling
533194	532266- 85	Meatsaw 10"(Ch) Switch 532266- 85 can use 576635 576636
533202	532266-62	Meatsaw 10" Chi Key 532266-62
533394	532266-70	Meatsaw Mincer Thrust ShAft 532266-70
534940	532266-48	Meatsaw 10"(Ch) B/Guide Holder 532266-48 Plastic Bag W/Tx Labelling
534941	532266-43	Meatsaw 10"(Ch) Guide Post 532266-43
535685	532266-41	Meatsaw 10"(Ch) guide post bracket 532266-41 Plastic Bag W/Tx Labelling
535689	532266-58	Meatsaw 10"(Ch) Fixing Knob 532266-58 (Star Knob) Plastic Bag W/Tx Labelling
535697	532266-49	Meatsaw 10"(Ch) Blade Guide Block 532266-49
536461	532266-25	Meatsaw 10"(Ch) Table Roller 532266-25,26,109 Plastic Bag W/Tx Labelling
536462	532266-5	Meatsaw 10"(Ch) L/ Blade Wheel 532266-5 Strong Carton W/Tx Labelling
536516	532266-109	Meatsaw 10"(Ch) M/Pulley Screw 532266-109 Plastic Bag W/Tx Labelling
576433	532266-72	Meatsaw Blade 81.5"X5/8"X4Tpi Suit 532266

No.	Order#	Description	Qty
1	7700100010	Pusher	1
2	7700100020	Cap screw	6
3	7700100030	Pusher guide bar	1
4	7700100040	Rod bracket	2
5	7700100050	Lock knob	2
6	7700100060	Table	1
7	7700100070	Fence	1
8	7700100080	Fence guide bar	1
9	7700100090	Retaining ring/shaft	1
10	7700100100	Ball bearing	2
11	7700100110	Blade	1
12	7700100120	Drive wheel	1
13	7700100130	Retaining ring/shaft	1
14	7700100140	Drive wheel shaft	1
15	7700100150	Upper cover	1
16	7700100160	Hex. nut	1
17	7700100170	Washer	1
18	7700100180	Spring	1
19	7700100190	Sliding bracket	1
20	7700100200	Adjusting plate	1
21	7700100210	Pin	1
22	7700100220	Table support	1
23	7700100230	Holder for sliding wheel	4
24	7700100240	Cap screw	15
25	7700100250	Sliding wheel shaft	4
26	7700100260	Sliding wheel	4
27	7700100270	Upper guard plate	1
28	7700100280	Hex. nut	23
29	7700100290	Washer	36
30	7700100300	Cap screw	2
31	7700100310	Position plate	2
32	7700100320	Limit plate	1
34	7700100340	Hex. bolt	2
35	7700100350	Housing	1
36	7700100360	Cap screw	1
37	7700100370	Hex. nut	1
38	7700100380	Side blade guard	1
39	7700100390	Washer	10
40	7700100400	Hex. bolt	4
41	7700100410	Guide post bracket	1
42	7700100420	Lock knob	1
43	7700100430	Guide post	1
44	7700100440	Upper blade guide bracket	1
45	7700100450	Bearing shaft	1
46	7700100460	Ball bearing	3
47	7700100470	Retaining ring/shaft	1

No.	Order#	Description	Qty
48	7700100480	Blade guide holder	1
49	7700100490	Square blade guide	2
50	7700100500	Upper blade guard plate	1
51	7700100510	Hex. nut	1
52	7700100520	Elastic washer	1
53	7700100530	Washer	1
54	7700100540	Spindle wheel	1
55	7700100550	V-belt	1
56	7700100560	Drive wheel	1
57	7700100570	Hex. bolt	1
58	7700100580	Support plate	1
59	7700100590	Ball bearing	1
60	7700100600	Shaft tube	1
61	7700100610	Hex. bolt	12
62	7700100620	Key	2
63	7700100630	Spindle	1
64	7700100640	Spring pin	1
65	7700100650	Ball bearing	1
66	7700100660	Meat grinder receptacle	1
68	7700100680	Grinder body	1
69	7700100690	Tube	1
70	7700100700	Thrust shaft	1
71	7700100710	Special pin	1
72	7700100720	Blade	1
73	7700100730	Round knife (small)	1
73-2	7700100732	Round knife (medium)	1
73-3	7700100733	Round knife (large)	1
74	7700100740	Grinder nut	1
75	7700100750	Insert	1
76	7700100760	Sausage funnel	1
76-2	7700100762	Meat packer	1
77	7700100770	Spring washer	15
78	7700100780	Top plate	1
79	7700100790	Carriage bolt	21
80	7700100800	Motor pulley	1
81	7700100810	Motor	1
82	7700100820	Motor support plate	1
84	7700100840	Cover for switch	1
85	7700100850	Switch	1
86	7700100860	Pan hd screw	2
87	7700100870	Pan hd screw	2
88	7700100880	Cable protector	1
89	7700100890	Power cord	1
91	7700100910	Tooth washer	2
92	7700100920	Washer	4
93	7700100930	Hex. nut	4

No.	Order#	Description	Qty
94	7700100940	Left plate	1
95	7700100950	Stand bracket	2
96	7700100960	Front plate	2
97	7700100970	Locking tabs	12
98	7700100980	Tapping screw	12
99	7700100990	Right plate	1
100	7700101000	Washer	4
101	7700101010	Support plate	4
102	7700101020	Rubber foot	4
103	7700101030	Hex. bolt	4

No.	Order#	Description	Qty
104	7700101040	Hex. nut	20
105	7700101050	Spring washer	20
106	7700101060	Washer	20
107	7700101070	Sliding wheel support plate	2
108	7700101080	Supporting plate	2
109	7700101090	Retaining ring/shaft	1
110	7700101100	Lock knob	3
111	7700101110	Hex. bolt	1
112	7700101120	Hex. nut (thin)	1