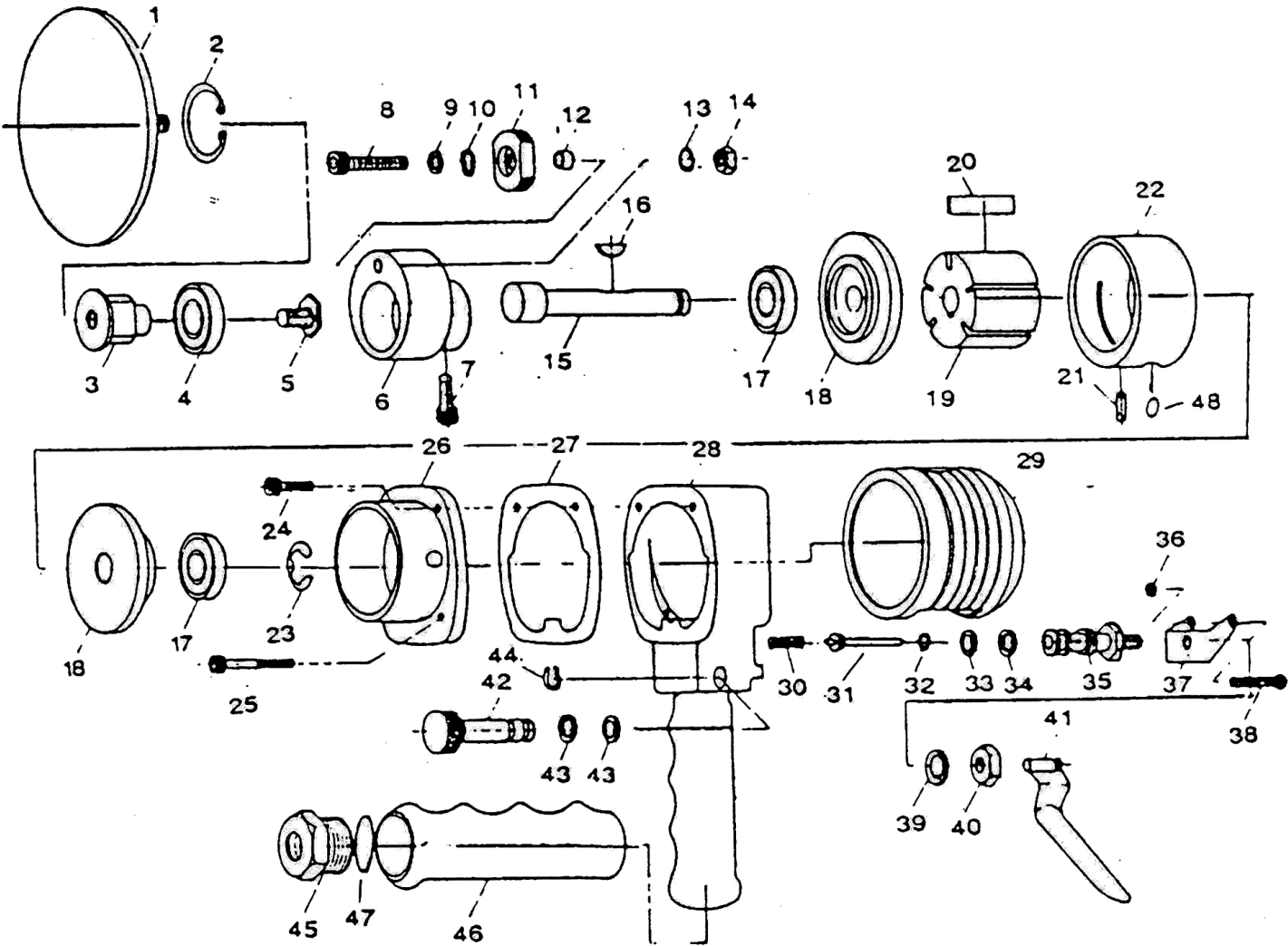


534348  
PARTS BREAKDOWN



| Component              | Item Description                      |
|------------------------|---------------------------------------|
| <a href="#">534732</a> | A/Sander D/A Retaining Ring 534348    |
| <a href="#">534733</a> | A/Sander D/A Pad 534348               |
| <a href="#">534703</a> | A/Sander D/A Throttle V/Spring 534348 |
| <a href="#">534704</a> | A/Sander D/A Throttle V/ShAFt 534348  |
| <a href="#">534705</a> | A/Sander D/A O Ring 534348            |
| <a href="#">534706</a> | A/Sander D/A Valve Bottom 534348      |
| <a href="#">534707</a> | A/Sander D/A Hux Nut 534348           |
| <a href="#">534708</a> | A/Sander D/A Bracket 534348           |
| <a href="#">534709</a> | A/Sander D/A Hinge Screw 534348       |
| <a href="#">534710</a> | A/Sander D/A Cap Screw 534348         |
| <a href="#">534711</a> | A/Sander D/A Throttle Lever 534348    |
| <a href="#">534712</a> | A/Sander D/A Housing Cover 534348     |
| <a href="#">534713</a> | A/Sander D/A Retaining Ring 534348    |
| <a href="#">534714</a> | A/Sander D/A O Ring 534348            |
| <a href="#">534715</a> | A/Sander D/A Regulator Valve 534348   |
| <a href="#">534716</a> | A/Sander D/A Retaining Ring 534348    |
| <a href="#">534717</a> | A/Sander D/A Wave Washer 534348       |
| <a href="#">534718</a> | A/Sander D/A Cylinder 534348          |
| <a href="#">534719</a> | A/Sander D/A O Ring 534348            |
| <a href="#">534720</a> | A/Sander D/A Rotor Blade (4) 534348   |
| <a href="#">534721</a> | A/Sander D/A Rotor ShAFt 534348       |
| <a href="#">534722</a> | A/Sander D/A Key 534348               |
| <a href="#">534723</a> | A/Sander D/A Gasket 534348            |

|                               |                                       |
|-------------------------------|---------------------------------------|
| <a href="#"><u>534724</u></a> | A/Sander D/A Cap Screw 534348         |
| <a href="#"><u>534725</u></a> | A/Sander D/A Cap Screw 534348         |
| <a href="#"><u>534726</u></a> | A/Sander D/A Orbital Hub 534348       |
| <a href="#"><u>534727</u></a> | A/Sander D/A Spacer 534348            |
| <a href="#"><u>534728</u></a> | A/Sander D/A Spindle Lock 534348      |
| <a href="#"><u>534729</u></a> | A/Sander D/A Spindle Lockscrew 534348 |
| <a href="#"><u>534730</u></a> | A/Sander D/A Hex Nut 534348           |
| <a href="#"><u>534731</u></a> | A/Sander D/A Drive Spindle 534348     |

### Parts list of AT-7015P

| Parts No | Description         | Quantity | Parts No | Description           | Quantity |
|----------|---------------------|----------|----------|-----------------------|----------|
| KL802-01 | 5" & 6" Sanding pad | 1        | KL802-25 | Cap Screw (L)         | 2        |
| KL802-02 | Retaining Ring      | 1        | KL802-26 | Drive Housing         | 1        |
| KL802-03 | Drive Spindle       | 1        | KL802-27 | Gasket                | 1        |
| KL802-04 | Ball Bearing 6201   | 1        | KL802-28 | Motor Housing         | 1        |
| KL802-05 | Font Screw          | 1        | KL802-29 | Housing Cover         | 1        |
| KL802-06 | Orhital Hub         | 1        | KL802-30 | Throttle Valve Spring | 1        |
| KL802-07 | Socket Screw        | 1        | KL802-31 | Valve Stem            | 1        |
| KL802-08 | Screw               | 1        | KL802-32 | "O" Ring              | 1        |
| KL802-09 | Flat Washer         | 1        | KL802-33 | "O" Ring              | 1        |
| KL802-10 | Washer Wave         | 1        | KL802-34 | "O" Ring              | 1        |
| KL802-11 | Spindle Lock        | 1        | KL802-35 | Valve Body            | 1        |
| KL802-12 | Spacer              | 1        | KL802-36 | Hex Nut               | 1        |
| KL802-13 | Wave Washer         | 1        | KL802-37 | Bracket               | 1        |
| KL802-14 | Hex Nut             | 1        | KL802-38 | Hinge Screw           | 1        |
| KL802-15 | Rotor Shaft         | 1        | KL802-39 | Lock Washer           | 1        |
| KL802-16 | Key                 | 1        | KL802-40 | Hex Nut               | 1        |
| KL802-17 | Ball Bearing        | 2        | KL802-41 | Throttle Lever        | 1        |
| KL802-18 | End Plate           | 2        | KL802-42 | Valve-Speed Regulator | 1        |
| KL802-19 | Rotor               | 1        | KL802-43 | "O" Ring              | 2        |
| KL802-20 | Rotor Blade         | 5        | KL802-44 | Ring-Retaining        | 1        |
| KL802-21 | Locating pin        | 1        | KL802-45 | Hose Adapter          | 1        |
| KL802-22 | Cylinder            | 1        | KL802-46 | Handing Cover         | 1        |
| KL802-23 | Retaining Ring      | 1        | KL802-47 | "O" Ring              | 1        |
| KL802-24 | Cap Screw (S)       | 2        | KL802-48 | "O" Ring              | 1        |

**Made In Taiwan**